

# Towers Wills

Town & Country

📞 01935 577 032 | 01460 298 530 | ✉ info@towerswills.co.uk



65, Monmouth Road, Yeovil, Somerset BA21 5NP

**£240,000**

Towers Wills are delighted to welcome to market this well presented four-bedroom semi-detached family home, offering spacious and versatile accommodation including a loft conversion providing a generous fourth bedroom. The property enjoys ample driveway parking, a low-maintenance rear garden and a convenient location close to local amenities, bus routes, schools, a convenience store and public house.

Accommodation:

Entrance Hall  
Double glazed door and window to the front, radiator and cupboard housing the gas boiler.

Lounge (4.82m max x 3.65m max)  
Comfortable reception room with double glazed window to the front and radiator.

Kitchen/Diner  
Kitchen Area (3.42m x 2.73m)  
Well fitted with space for an American-style fridge/freezer, integrated electric hob with extractor over, integrated electric oven, space for washing machine, space for dishwasher, one bowl stainless steel sink/drainer and double glazed window to the rear. Archway opening to:

Dining Area (2.63m x 2.77m)  
Radiator and double glazed patio doors opening onto the rear garden, ideal for entertaining.

First Floor Landing  
Double glazed window to the side.

Shower Room  
Double glazed windows to rear and side, heated towel rail, WC, wash hand basin, extractor fan and shower cubicle.

Bedroom One (3.04m x 3.63m max)  
Double glazed window to the rear and radiator.

Bedroom Two (2.59m max x 3.12m max)  
Double glazed window to the front and radiator.

Bedroom Three (3.23m x 2.41m max)  
Double glazed window to the front and radiator.

Second Floor  
Bedroom Four / Loft Room (3.52m max x 5.57m max)  
With restricted head height, double glazed skylight to the rear, radiator and useful under eaves storage.

Outside:

To the front, ample driveway parking is provided with side gate access to the rear.  
The rear garden has been designed for low maintenance with a decked seating area and gravelled garden. A brick-built outbuilding with power, single glazed windows and side access provides excellent additional storage or workspace, complemented by a wooden shed and outside tap.

Key Features

- Well Presented
- Semi-Detached
- Four Bedrooms
- Driveway Parking
- Low Maintenance Rear Garden

Contact Us

**Towers Wills Estate  
Agents - Yeovil**  
114, Hendford Hill  
Yeovil  
Somerset  
BA202RF  
T: 01935 577032  
E: [info@towerswills.co.uk](mailto:info@towerswills.co.uk)

Energy Efficiency

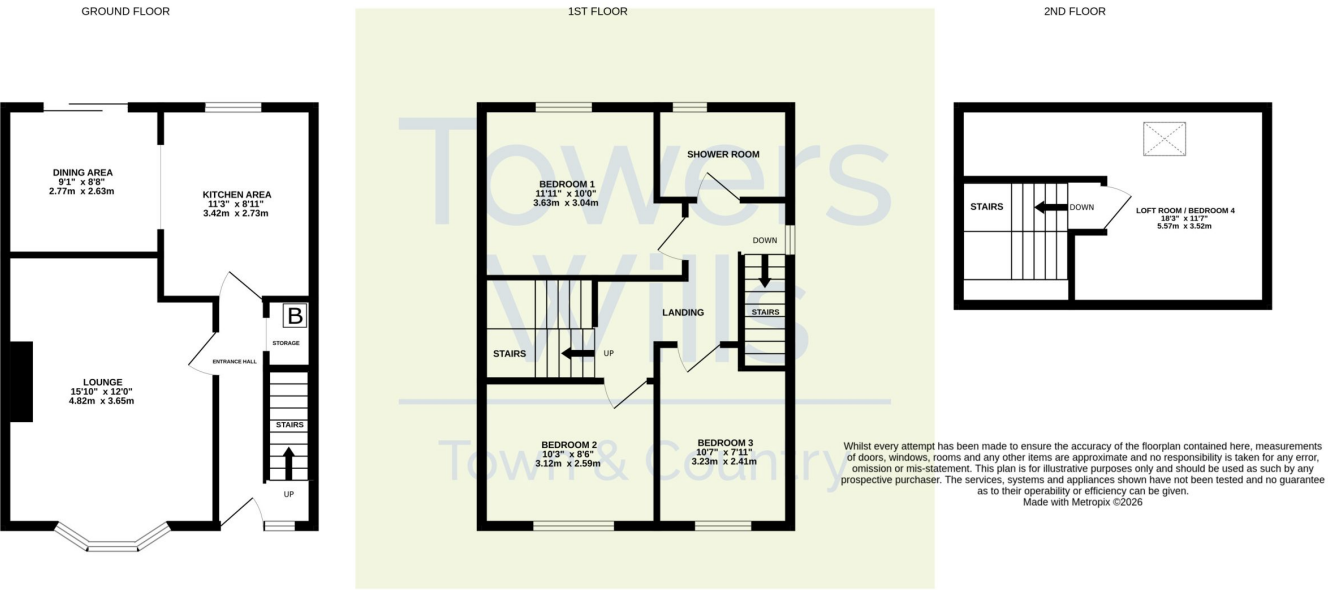
Score	Energy rating	Current	Potential
92+	A		
81-91	B		83 B
69-80	C		
55-68	D	68 D	
39-54	E		
21-38	F		
1-20	G		







# Floor Plan



Please Note No tests have been undertaken of any of the services and any intending purchasers should satisfy themselves in this regard. Towers Wills Ltd for themselves and for the vendor of this property whose agents they are, give notice that, (i) these particulars do not constitute any part of an offer or contract, (ii) all statements contained within these particulars are made without responsibility on the part of Towers Wills or the vendor , (iii) whilst made in good faith, none of the statements contained within these particulars are to be relied upon as a statement of representation or fact , (iv) any intending purchaser must satisfy him/herself by inspection or otherwise as to the correctness of each of the statements contained within these particulars, (v) the vendor does not make or give either Towers Wills or any person in their employment any authority to make or give representation or warranty whatsoever in relation to this property.

Photographs / Floor Plans Photographs are reproduced for general information and it must not be inferred that any item is included for sale with this property. Please note floor plans are not to scale and are for identification purposes only. The photographs used in these particulars may have been taken with the use of a wide angle lens. If you have any queries as to the size of the accommodation or plot, please address these with the agent prior to making an appointment to view

**Towers Wills**

The White House, 114 Hendford Hill, Yeovil BA20 2RF

Yeovil 01935 577032 / South Petherton 01460 298530

[info@towerswills.co.uk](mailto:info@towerswills.co.uk) | [www.towerswills.co.uk](http://www.towerswills.co.uk)