



**Price**  
**£375,000**

**Freehold**

2x  2x  1x 

**The Moors, Redhill,  
Surrey, RH1**

**OVER 60?**

Secure this property  
for up to **59% less!**

**cubitt & west**  
Helping you move forwards



## Main features

- Situated in an exclusive and highly sought-after development
- Spacious bedrooms with en suites
- Light-filled lounge and dining area with direct access to the garden
- Fitted kitchen with integrated appliances
- Located in Watercolour with scenic nature walks nearby

## Accommodation

### GROUND FLOOR

Entrance Hall

Dining/Lounge Area: 27'0 x 12'6 (8.24m x 3.81m)

Kitchen: 10'6 x 6'8 (3.20m x 2.03m)

Cloakroom

### FIRST FLOOR

Bedroom 1: 12'6 x 8'5 (3.81m x 2.57m)

En suite Bathroom

Bedroom 2: 12'6 x 9'7 (3.81m x 2.92m)

En suite Shower Room

### OUTSIDE

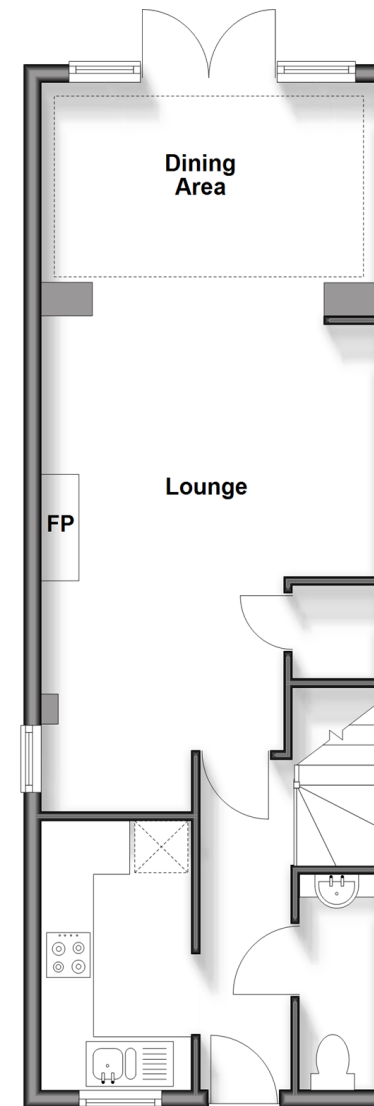
Garage

Front Garden

Rear Garden

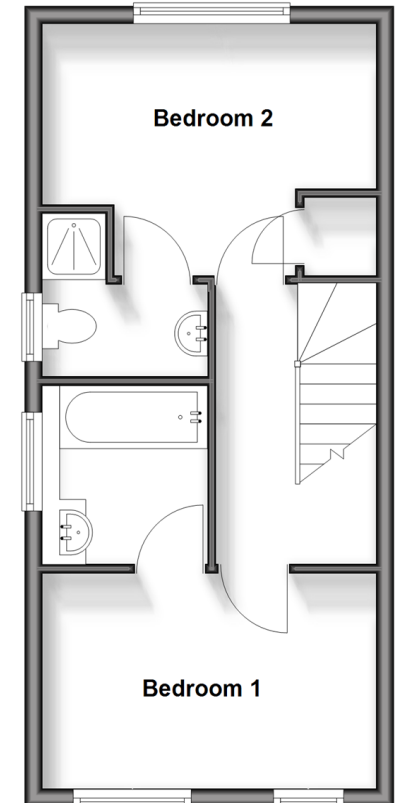
## Ground Floor

Approx. 43.0 sq. metres (463.0 sq. feet)



## First Floor

Approx. 32.7 sq. metres (351.7 sq. feet)



Call Redhill - 01737 778866 ■ [cubittandwest.co.uk](http://cubittandwest.co.uk)

■ Through a Homewise Home For Life Plan people aged 60+ can secure this property for up to 59% less, by purchasing a Lifetime Lease



23411084/20260330/AB/JB2