



Church Street, Scothern



0



0



0

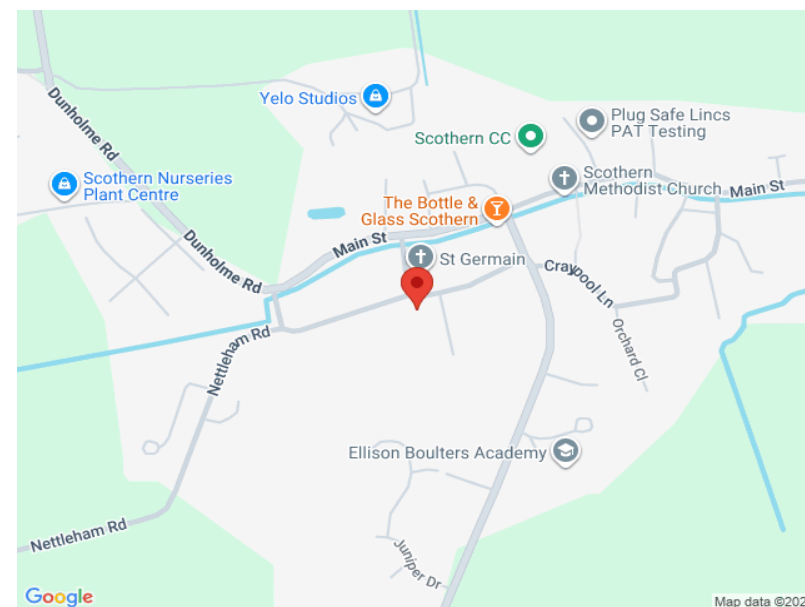


## Offers invited £600,000

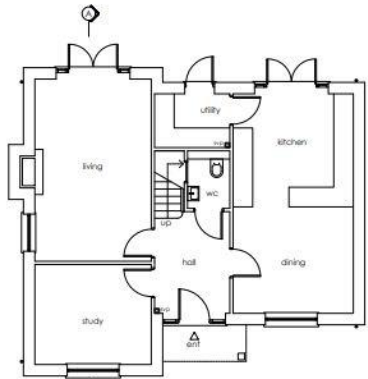


An exceptional opportunity with full planning permission granted (Ref: WL/2024/00504) for the construction of three detached properties each with individual layout and four bedrooms with double garages on land to the rear of 16 Church Street, Scothern each with individual layout and garaging. This prime site offers a rare chance to develop within the heart of this desirable village.

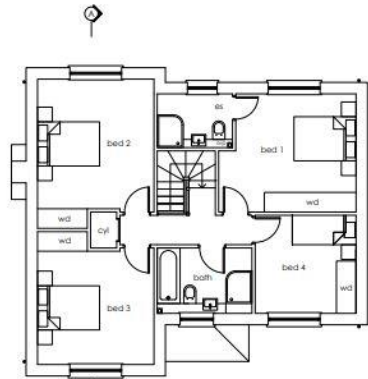
The development is situated within walking distance of local amenities, including a primary school, pub, and village hall and easy access to neighbouring villages of Nettleham and Welton.



## Plot 1



Ground floor plan



First floor plan

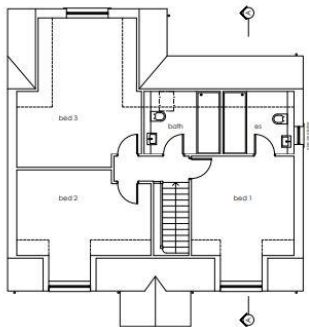


Front elevation



Rear elevation

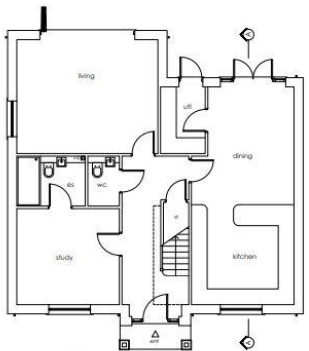
## Plot 2



First floor plan



Front elevation

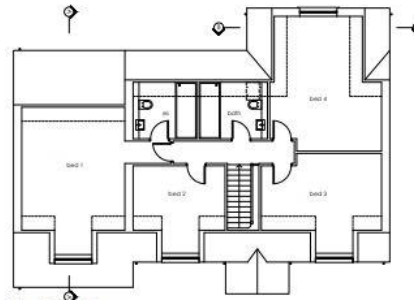


Ground floor plan



Rear elevation

## Plot 3



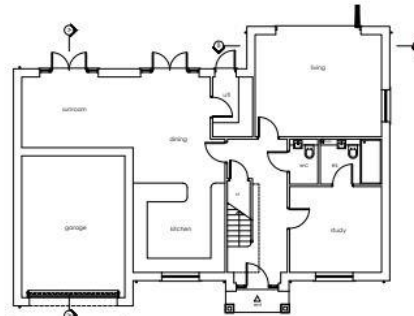
First floor plan



Front elevation



Rear elevation



Ground floor plan