



46 Allington Court Outwood Common Road, Billericay – CM11 2JB

£140,000 Leasehold

Situated in the sought after retirement complex of Allington Court, is this one bedroom first floor apartment with views over the communal garden.

Service Charge £231.71 per month Ground Rent £6.67 per month

Council Tax band: B ~ EPC Energy Efficiency Rating: C



tyler estates

01277 626181

www.tylerestates.co.uk



Entrance hallway

Storage heater and storage cupboard.

Lounge

13' 1" x 11' 2" (4.00m x 3.41m)

Storage heater, double glazed windows overlooking the gardens, warden careline appliance with emergency pull cord.

Kitchen

9' 0" x 8' 0" (2.75m x 2.43m)

Ample wall and base units, stainless steel sink and drainer, cooker with extractor over, fridge/freezer and washing machine.

Bedroom

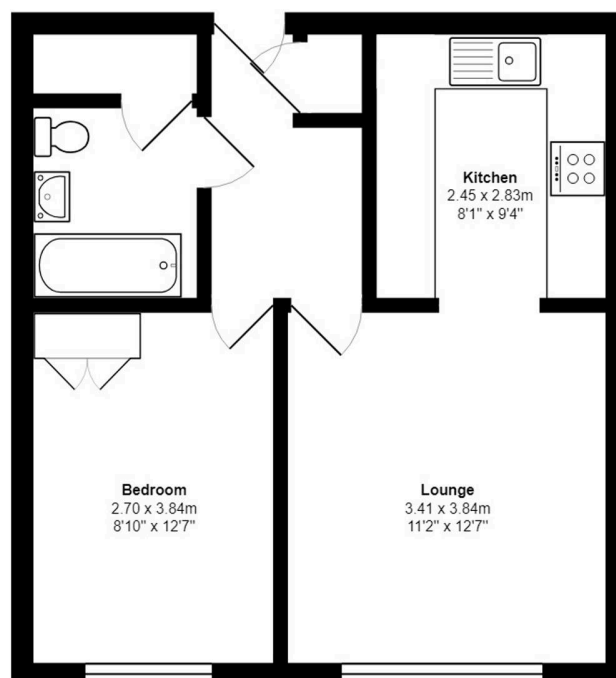
12' 8" x 8' 11" (3.86m x 2.71m)

Fitted wardrobes, with double glazed window overlooking the gardens.

Bathroom

7' 1" x 5' 8" (2.15m x 1.72m)

A new modern bathroom including an electric shower within cubicle, white vanity unit with wash hand basin and w.c. The walls are fully tiled and there is a built in cupboard, handy for storage. Spotlights to the ceiling, vinyl flooring and extractor fan fitted. A pull cord for the Careline system is within the bathroom.



Total Area: 41.6 m² ... 448 ft²

Measurements are approximate for illustrative purposes only and may have been taken from the widest area
Floorplan Copyright Equinox Energy Performance Certificates
www.energyperformancecertificates.biz