



Let **UK** Home

**2 Bedrooms**

**Flat**

Located  
in Manchester

**£2,300 Per Month**



[padmin@letukhome.co.uk](mailto:padmin@letukhome.co.uk)

<https://www.letukhome.co.uk/>

01615219812



# 11 Silvercroft Street Manchester

M15 4ZR



Let UK Home are excited to offer this stunning 2 bedroom apartment in Three60, the cylindrical skyscraper in Manchester.

This property comprises a large bright open plan kitchen and living room, two double bedrooms with wardrobes(master with ensuite), a large family sized bathroom and ample storage.

Residents of the development will have access to concierge, private gym & spa, residents lounge & private meeting/dining rooms.

The development is surrounded by many prestigious universities and rich educational resources. Internationally renowned institutions such as the University of Manchester (UOM), Manchester Metropolitan University (MMU) and the Royal Northern College of Music (RNCM) are all within walking distance.

The closest train station to the property is Deansgate station which is just a few minutes walk from Three60. Manchester Piccadilly Station and Manchester Oxford Road station are both within walking distance of the development.

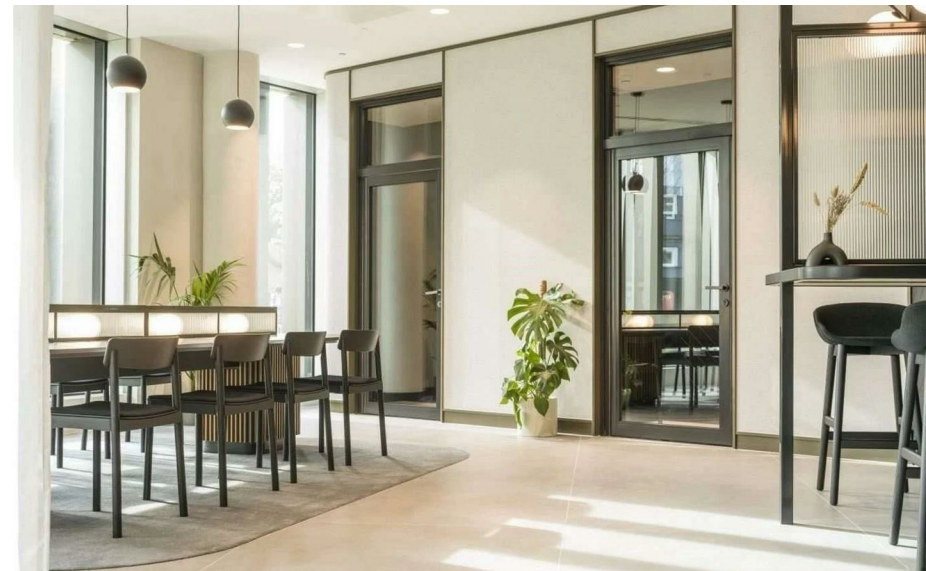
Residents can enjoy bustling restaurants, bars, and the picturesque Castlefield canal walk. The development is adjacent to Deansgate commercial street, along which you will find famous locations such as the John Rylands Library, Beetham Tower (landmark), Manchester Cathedral, and Selfridges department store, with numerous well-known shops, providing one-stop options for dining, drinking, and entertainment. The surrounding area has multiple large shopping malls with all

# 11 Silvercroft Street Manchester

£2,300 Per Month

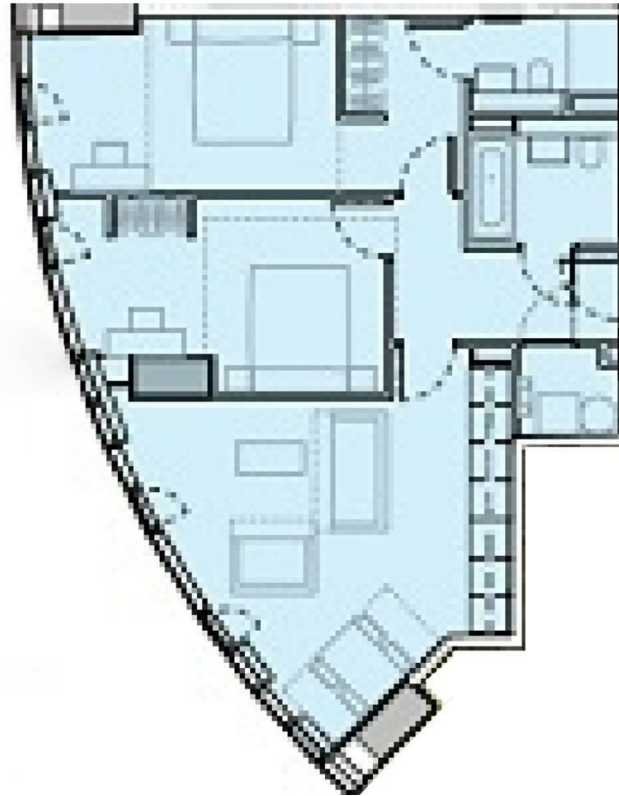


- 19th Floor
- Concierge Service
- The Gym
- Residents Lounge
- Yoga Room
- EPC Rating: B
- 24h Security
- Co-working Space
- Sauna & Steam Room
- Private Dining Room



Total floor area

80 square metres



Let **UK** Home

1/F, St James Tower 7 Charlotte  
Street  
Manchester  
M1 4DZ

01615219812

[pmadmin@letukhome.co.uk](mailto:pmadmin@letukhome.co.uk)

**Council Tax Band: E**

**Local Authority:**

Agents Note: Whilst every care has been taken to prepare these particulars, they are for guidance purposes only. All measurements are approximate and are for general guidance purposes only and whilst every care has been taken to ensure their accuracy, they should not be relied upon and potential buyers/tenants are advised to recheck the measurements.

Energy Efficiency Rating		Current	Potential
Very energy efficient - lower running costs			
(92 plus) <b>A</b>			
(81-91) <b>B</b>		84	84
(69-80) <b>C</b>			
(55-68) <b>D</b>			
(39-54) <b>E</b>			
(21-38) <b>F</b>			
(1-20) <b>G</b>			
Not energy efficient - higher running costs			
<b>England &amp; Wales</b>		EU Directive 2002/91/EC	

<https://www.letukhome.co.uk/>