



Ilbert Street W10

Parkheath
Sold on Service





Ilbert Street, W10
£425,000
Leasehold

- Spacious 1 bedroom apartment
- Private rear decked courtyard garden and additional internal courtyard
- Fabulous rear kitchen/dining room space
- Original wooden floors
- Requires some internal refurbishment.
- Great 1st home or pier'd'terre
- Situated in the popular Queens Park conservation area
- Benefits from high ceilings and period charm
- Please note that some of these images have been staged using AI
- Queen's Park conservation area, Council Tax: Westminster City band D



Parkheath
Sold on Service

Westminster Tax band D

Belsize Park/Hampstead
 208 Haverstock Hill
 NW3 2AG
 Sales 020 7431 1234
 Lettings 020 7431 3104
nw3@parkheath.com

South/West Hampstead
 192 West End Lane
 NW6 1SG
 Sales & Lettings
 Tel 020 7794 7111
192@parkheath.com

Kensal Rise
 54-56 Chamberlayne Rd
 NW10 3JH
 Tel 020 8960 4845
kensal@parkheath.com

Property Management
 192 West End Lane
 NW6 1SG
 020 7433 6174
pm@parkheath.com

www.parkheath.com

Ilbert Street, London, W10

Approximate Gross Internal Floor Area = 62.1 sq m / 669 sq ft

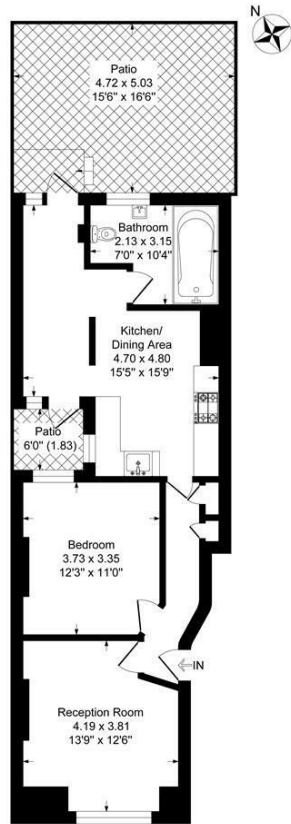
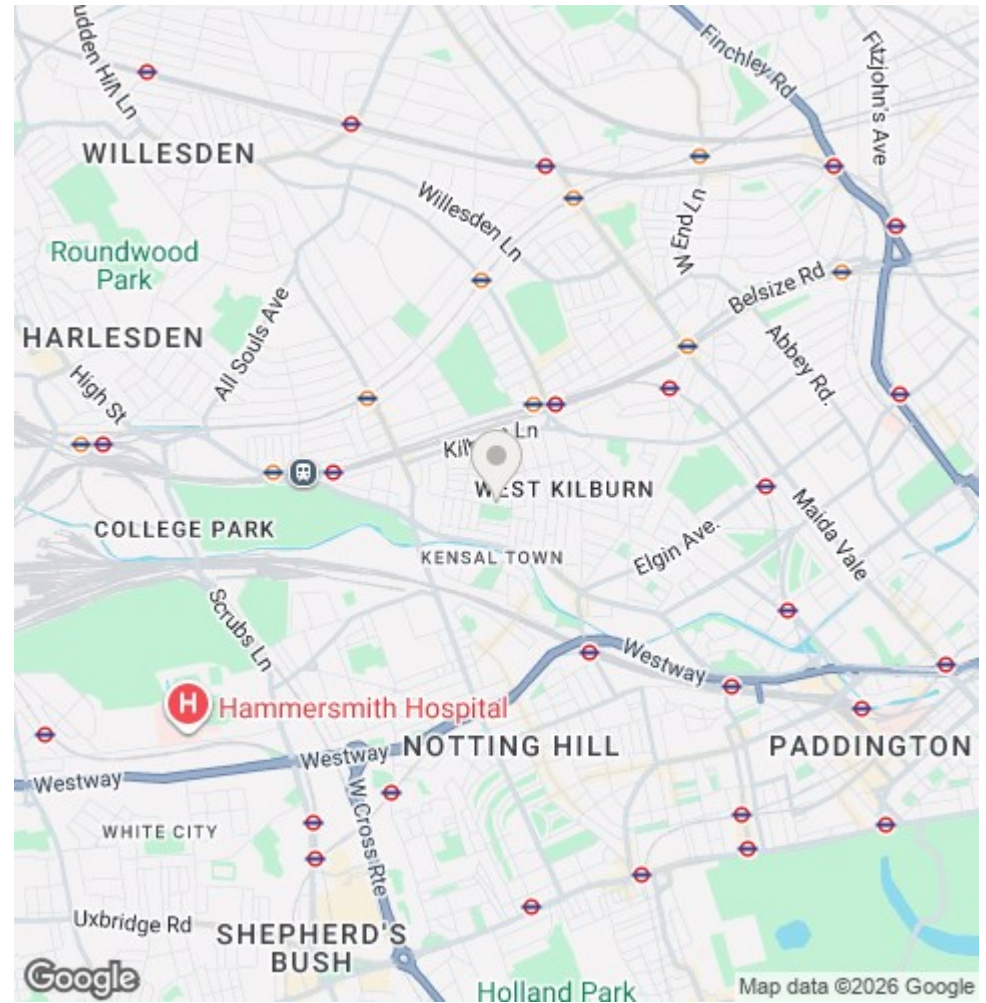


Illustration for identification purposes only, measurements are approximate, not to scale.



The particulars do not constitute part of an offer or contract. The particulars, including text, photographs and plans, are for the guidance only of prospective purchasers/tenants and must not be relied upon as statements of fact. The descriptions provided therein represent the opinion of the author and whilst given in good faith should not be construed as statements of fact. Nothing in these particulars shall be deemed a statement that the property is in good condition or otherwise or that any services or facilities are in good working order. All measurements are approximate