

HUNTERS®

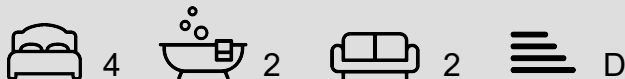
HERE TO GET *you* THERE



Sea View Gardens, Sunderland Offers In The Region Of £350,000

Council Tax: C

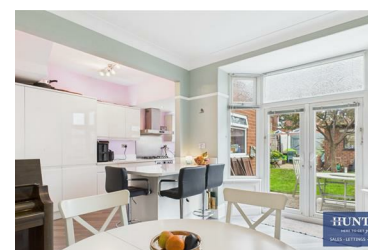
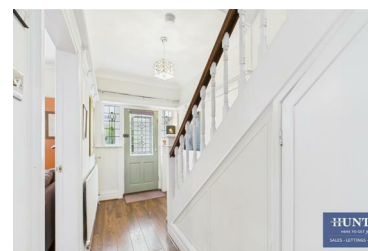
Tenure: Leasehold



PLEASE VIEW VIRTUAL TOUR & FLOORPLAN * SUPERB LOFT CONVERSION * FOUR BEDROOMS * GARDEN * GARAGE * COUNCIL TAX BAND - C * EPC RATING-D*

Nestled in the desirable Sea View Gardens area of Sunderland, this charming semi-detached house presents an exceptional opportunity for families in search of a spacious and inviting home. Spanning an impressive 1,207 square feet, the property artfully combines modern enhancements with delightful original features, creating a warm and welcoming environment.

Upon entering, you are greeted by a lovely porch and hallway that lead into the home. The front reception room is particularly captivating, featuring a bay window that floods the space with natural light, complemented by a charming feature fireplace, perfect for cosy evenings. At the rear, the



11b Sea Road, Fulwell, Sunderland, SR6 9BP
Tel: 0191 594 7788 Email: sunderland@hunters.com
<https://www.hunters.com>

