

Acre Lane, Brixton, SW2

1 bedroom flat - purpose built for sale

£500,000

Leasehold

Property Details

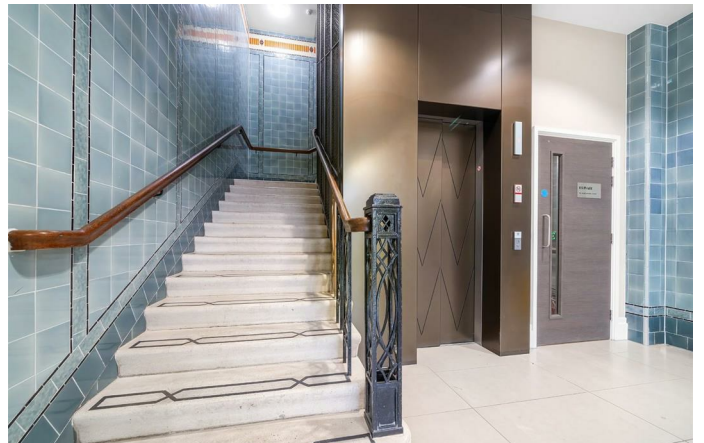
This stunning one double bedroom apartment offers over 600 square feet of beautifully designed internal living space, peacefully positioned on the first floor of an iconic Art Deco-style building. Beautifully presented throughout with high-end fixtures and fittings, the property features an expansive open-plan kitchen, reception and dining area finished with elegant herringbone flooring and flooded with natural light from large dual-aspect picture windows. The space is thoughtfully designed for both relaxing and entertaining, with generous proportions allowing for a full dining setup and comfortable lounge area. The contemporary kitchen is fitted with sleek grey handleless cabinetry, crisp white worktops and fully integrated appliances including a dishwasher, induction hob, Bosch oven and microwave, all seamlessly incorporated for a streamlined finish. The bedroom is a well-proportioned double with soft carpeting and excellent built-in wardrobe storage, while the bathroom is fully tiled and finished to a high standard with modern fittings and a shower over bath. The property further benefits from lift access, secure bike storage and well-maintained communal areas.

Council tax band C

EPC rating B (82)

Features

- One double bedroom
- Over 600 square feet
- Stunning Art-Deco style modern build
- High-end finishes and tasteful design throughout
- Lift and bike storage
- Central Brixton, moments from Brixton Village and Tube
- First stop on the Victoria Line
- Brockwell Park a short stroll
- Chain-free

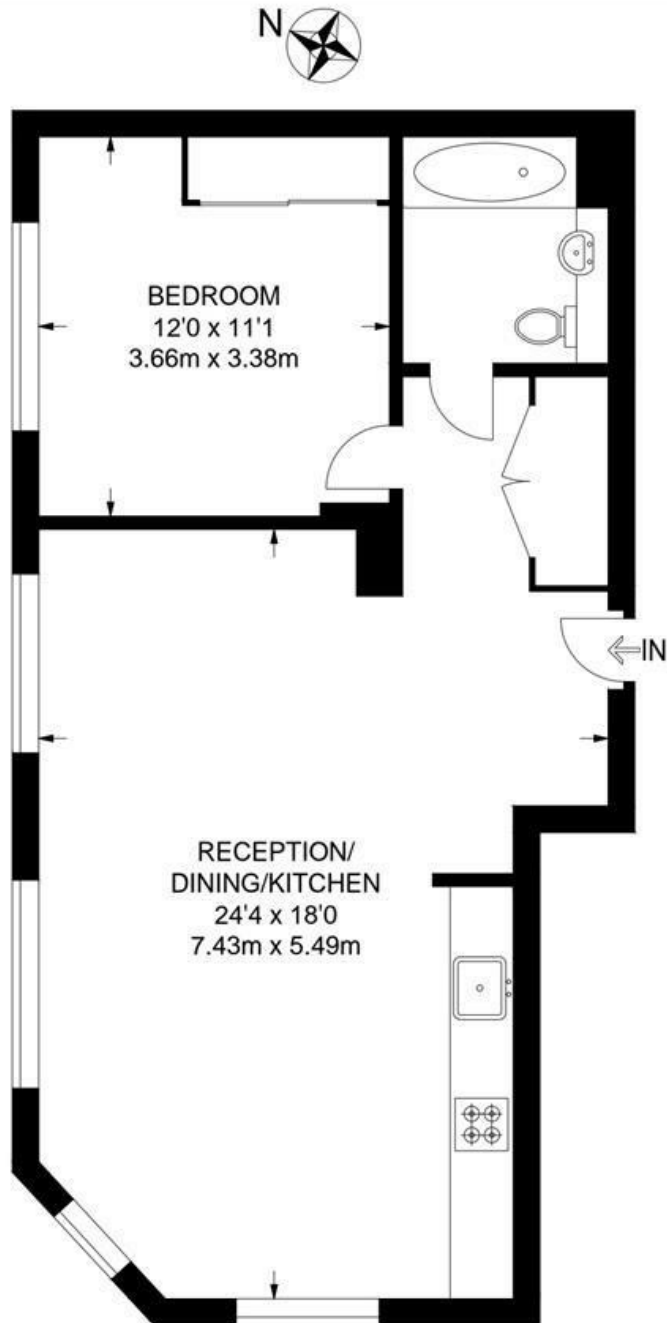




Acre Lane, Brixton, SW2

Acre Lane, SW2
1 Bedroom Flat

APPROXIMATE GROSS INTERNAL AREA: **612 SQ FT / 56.8 SQ M**



FIRST FLOOR



While we try our very best, floor plans are produced as a guide only and we take no responsibility for the precise accuracy with which any property is represented.

Acre Lane, Brixton, SW2

