



Duke Street, W1U

£807 Per week

A one bedroom apartment on the second floor of a Georgian building just off Manchester Square. The property has a reception, separate kitchen, double bedroom with built-in storage and a bathroom.

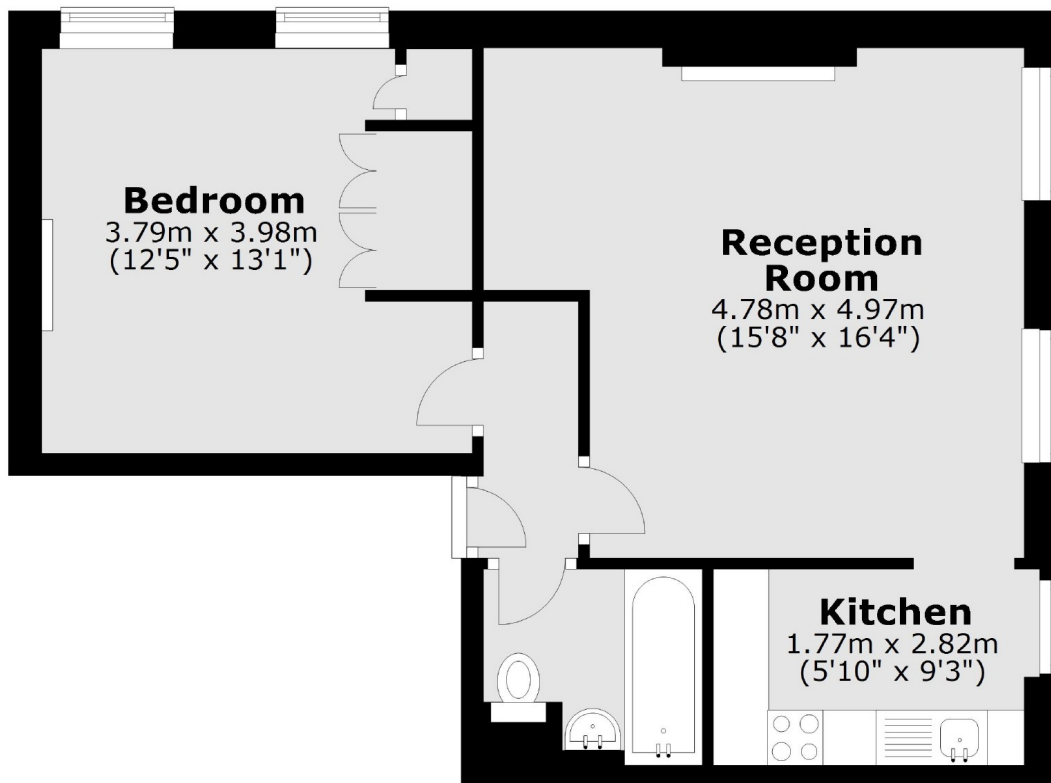
Duke Street is just off Manchester Square and a short walk from Marylebone High Street and the hustle and bustle of Oxford Street. Bond Street station is close by.

Features

- Second Floor Flat
- One Double Bedroom
- Separate Kitchen
- Unfurnished
- The Portman Estate

Duke Street,
London, W1U

Second Floor



Total area: approx. 48.6 sq. metres (523.6 sq. feet)