



Connells

Dulverton Road
Melton Mowbray

Dulverton Road Melton Mowbray LE13 0SF

for sale
£325,000



Property Description

Dulverton Road is a three bedroom detached property offering practical family accommodation. The ground floor includes a front lounge and rear kitchen/diner with garden access. Upstairs are three bedrooms and a family bathroom. Externally, the home benefits from a private rear garden with patio and lawn, plus a driveway providing off-road parking. The property is situated in a residential area of Melton Mowbray close to local schools, supermarkets, and transport connections to Leicester, Nottingham, and Grantham.

Lounge

Bay fronted window with fire place, radiator, and carpeted throughout

Dining Room

Well proportioned room connecting the living room and sitting room

Sitting Room

Cozy additional reception area with rear facing patio doors opening up into the garden

Kitchen

Fully fitted kitchen with breakfast bar wrapping around the property. Gas hob, electric oven and integrated appliances throughout.

Bed 1

Front facing double glazed window with radiator and carpet throughout.

Bed 2

Rear facing double glazed window with radiator and carpet throughout

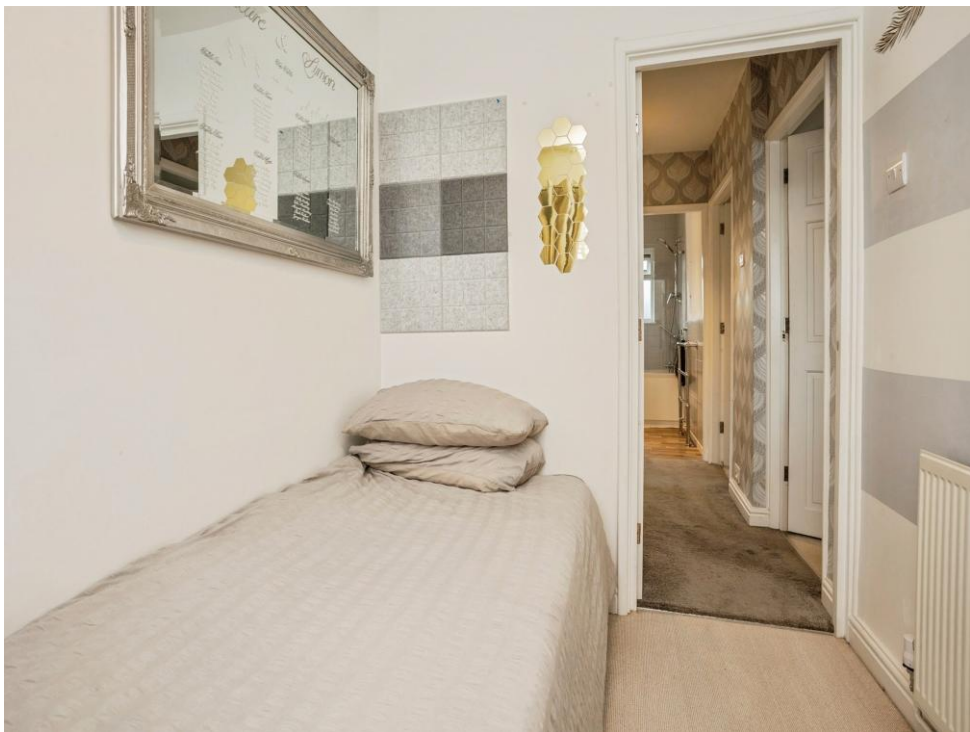
Bed 3

Front facing double glazed window with radiator and carpet throughout

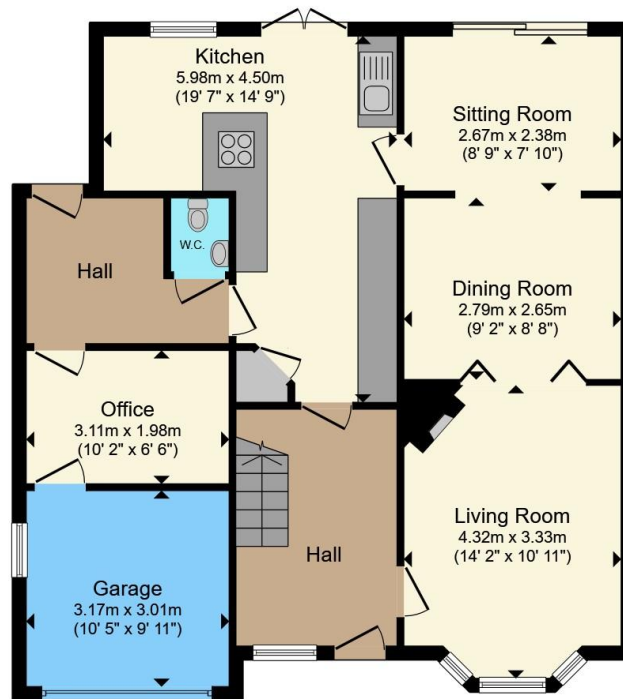
Bathroom

3 Piece suite with wash hand basin, WC bath and over bath shower.

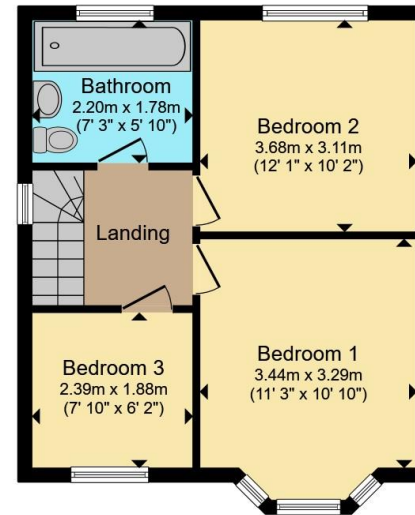








Ground Floor



First Floor

Total floor area 126.4 m² (1,361 sq.ft.) approx

This floor plan is for illustrative purposes only. It is not drawn to scale. Any measurements, floor areas (including any total floor area), openings and orientation are approximate. No details are guaranteed, they cannot be relied upon for any purpose and they do not form part of any agreement. No liability is taken for any error, omission or misstatement. A party must rely upon its own inspection(s). Powered by www.propertybox.io

Connells

To view this property please contact Connells on

T 01664 560 241

E meltonmowbray@connells.co.uk

10A High Street
MELTON MOWBRAY LE13 0TR

EPC Rating: D Council Tax
Band: C

Tenure: Freehold

view this property online connells.co.uk/Property/MOW307778



1. MONEY LAUNDERING REGULATIONS Intending purchasers will be asked to produce identification documentation at a later stage and we would ask for your co-operation in order that there will be no delay in agreeing the sale. 2. These particulars do not constitute part or all of an offer or contract. 3. The measurements indicated are supplied for guidance only and as such must be considered incorrect. Potential buyers are advised to recheck measurements before committing to any expense. 4. We have not tested any apparatus, equipment, fixtures, fittings or services and it is in the buyers interest to check the working condition of any appliances.

Connells Residential is registered in England and Wales under company number 1489613, Registered Office is Cumbria House, 16-20 Hockliffe Street, Leighton Buzzard, Bedfordshire, LU7 1GN. VAT Registration Number is 500 2481 05.

See all our properties at www.connells.co.uk | www.rightmove.co.uk | www.zoopla.co.uk

Property Ref: MOW307778 - 0005