



Guide Price
£365,000

Freehold

3x  1x  1x 

**Vauxhall Avenue, Herne
Bay, Kent, CT6**

OVER 60?

Secure this property
for up to **59% less!**

Wards
Helping you move forwards



Main features

- A short walk to the beach
- Off street parking for multiple cars
- Cabin with power in garden
- Low maintenance rear garden
- Well presented throughout

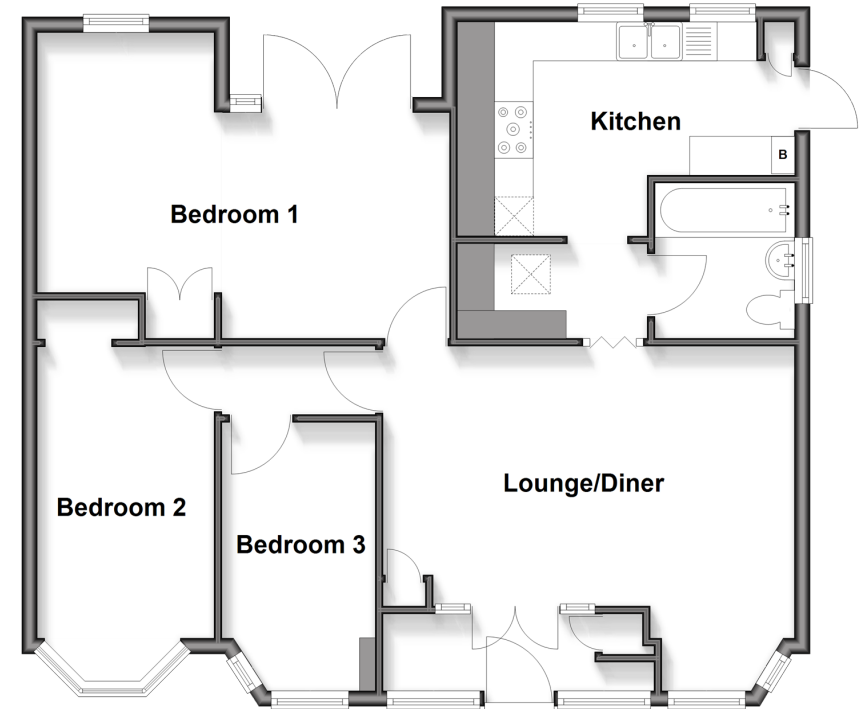
Accommodation

Entrance Porch
 Lounge/Diner: 17'4 x 11'3 (5.29m x 3.43m)
 Bedroom 3: 9'1 x 6'6 (2.77m x 1.98m)
 Bedroom 2: 14'2 x 7'6 (4.32m x 2.29m)
 Bedroom 1: 18'5 x 10'11 at widest point (5.62m x 3.33m)
 Bathroom
 Kitchen/Diner: 13'7 x 9'1 (4.14m x 2.77m)

OUTSIDE

Off street parking to front
 Low maintenance rear garden
 Cabin with power

Ground Floor
 Approx. 78.1 sq. metres (841.2 sq. feet)



Call Herne Bay - 01227 361226 ■ wardsof Kent.co.uk

- Legal advice should be taken to verify fixtures/fittings, planning, alterations and/or lease details
- Appliances & services are untested, dimensions are approximate and floor plans are not to scale
- Through a Homewise Home For Life Plan people aged 60+ can secure this property for up to 59% less, by purchasing a Lifetime Lease



11238670/20260307/DP/FW