



Woodside Avenue, N6

£3,500,000

Dexters



Woodside Avenue, N6

This incredible detached family home provides exceptional accommodation, ideal for extended families, and those looking to work from home or entertain on a grand scale.

With a large welcoming entrance hallway, the sprawling ground floor has a large double drawing room for formal use, a magnificent kitchen/family room, secluded play room/office and the advantage of a large utility room and additional catering kitchen.

On the upper floors, the flexible accommodation has seven bedrooms, a dressing room, three bathrooms, rear terrace from the principle bedroom and an abundance of storage.

Externally there is off street-parking to the front, a large lawned rear garden with generous patio area. The property also features an annexed first floor, one bedroom apartment.

Occupying a bold corner plot, this fine home has easy access to major transport routes, two underground stations, Cherry Tree Woods and a number of sought after schools.

Features

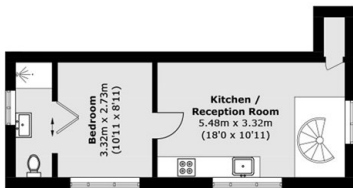
- Seven Bedrooms
- Three Bathrooms
- Three Reception Rooms
- Exceptional Kitchen
- Glorious Rear Garden
- Off-Street Parking



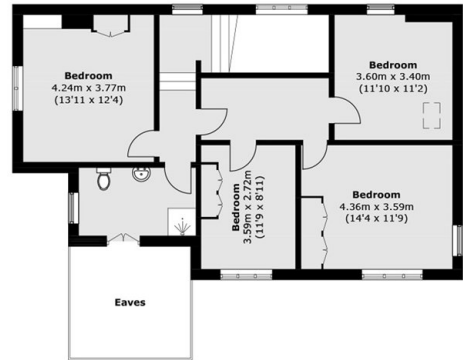




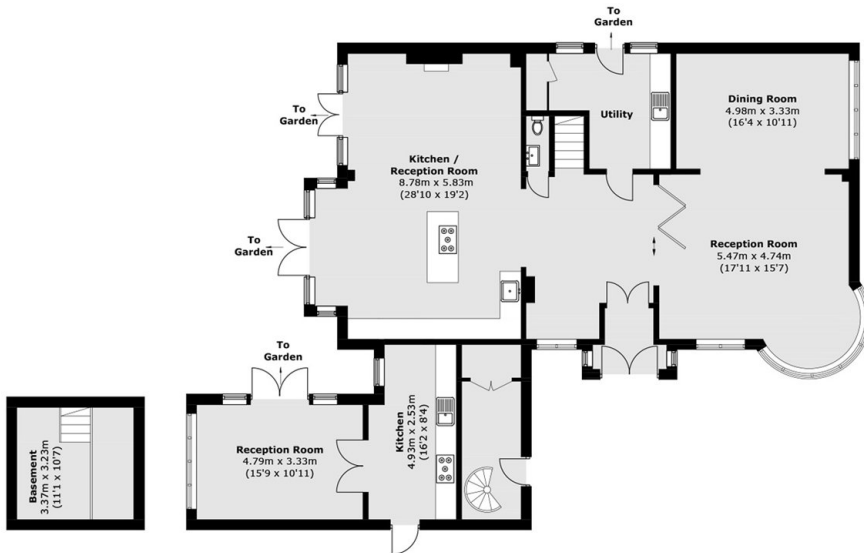
Woodside Avenue, London, N6



Annex - First Floor



Second Floor



Ground Floor



First Floor



Basement

Total area (approx.): 414.8 sq. m (4,464.9 sq. ft)
(Including Basement / Excluding Eaves)
Balcony: 19.4 sq. m (208.8 sq. ft)