

CHARMILL

RESIDENTIAL

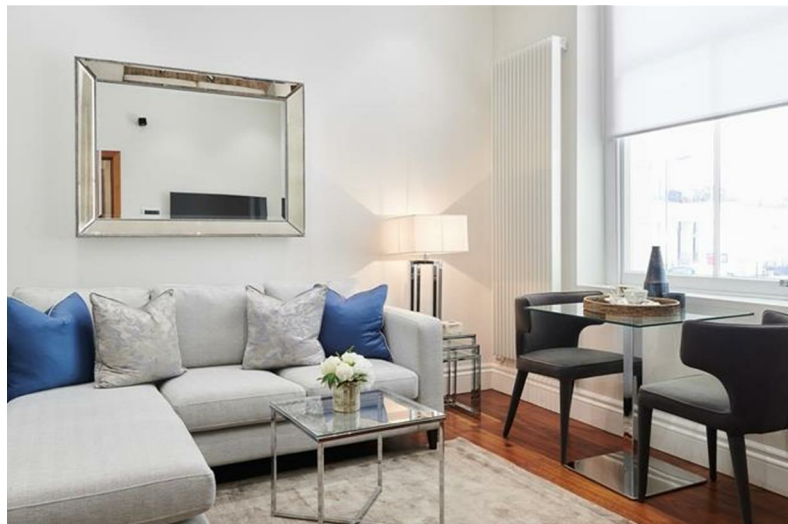


Kensington Gardens Square, Bayswater W2

£790



Kensington Gardens Square



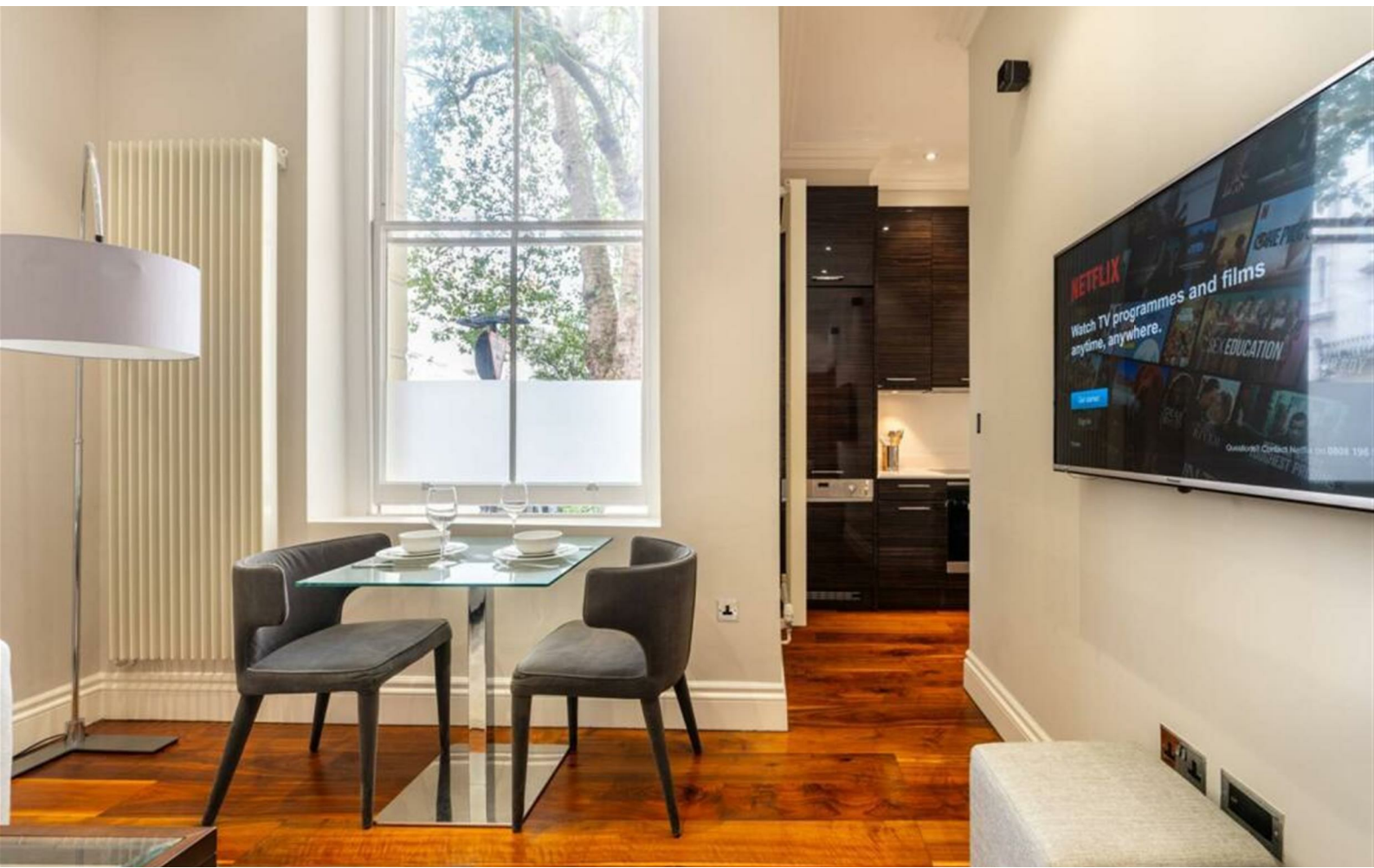
Description

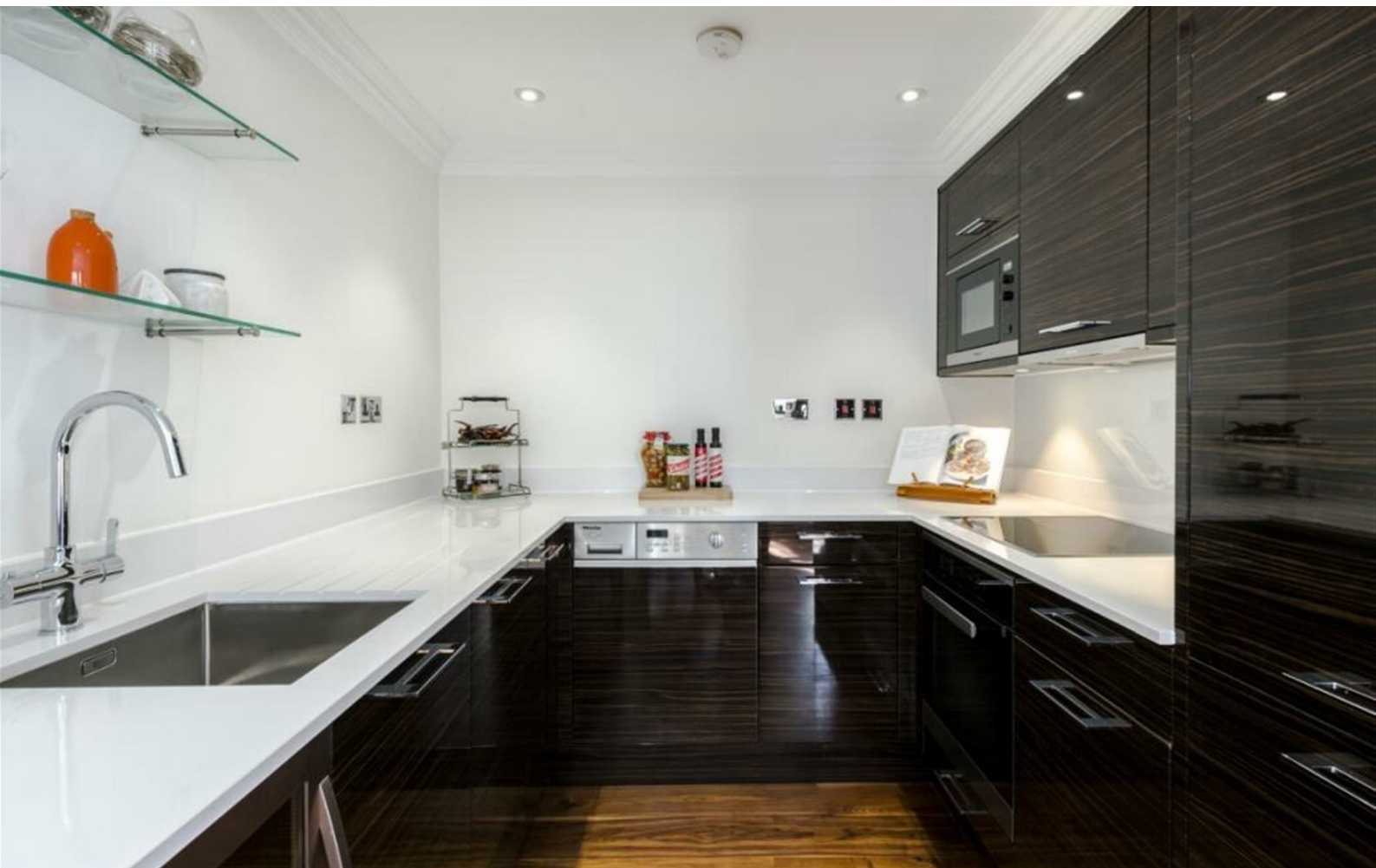
This charming ground-floor apartment is located in a private, well-maintained block and offers a perfect blend of comfort and character. It features a spacious reception room with high ceilings and a large sash window that floods the space with natural light, offering picturesque views of the tranquil Kensington Garden Square. Residents can enjoy access to the beautifully landscaped communal garden, ideal for outdoor relaxation.

Inside, this elegant apartment features a spacious double bedroom with generous storage space, a sophisticated reception area adorned with bespoke furnishings, and a stunning polished marble bathroom. The fully integrated, custom Miele kitchen is perfect for those who enjoy cooking, while smart home technology—including Smart TVs in both the bedroom and the reception room—adds a modern touch to the living experience.

The building offers an array of top-tier amenities, including 24-hour security, lift access to all floors, and exclusive private entry to the serene Kensington Garden Square gardens. Residents also benefit from an emergency out-of-hours maintenance service.

- Beautiful 1 bedroom apartment
- Double bedroom with built in cupboards
- Access to stunning communal gardens
- Naturally bright interiors
- 24 hour security
- Wonderful location





Floor Plan

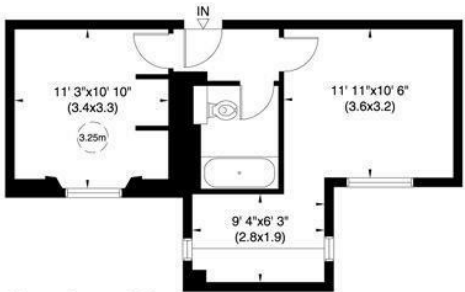
G7 Garden House, Kensington Gardens Square, W2

Gross internal area (approx.)

37 Sq m (396 Sq ft)

For identification only, Not to Scale

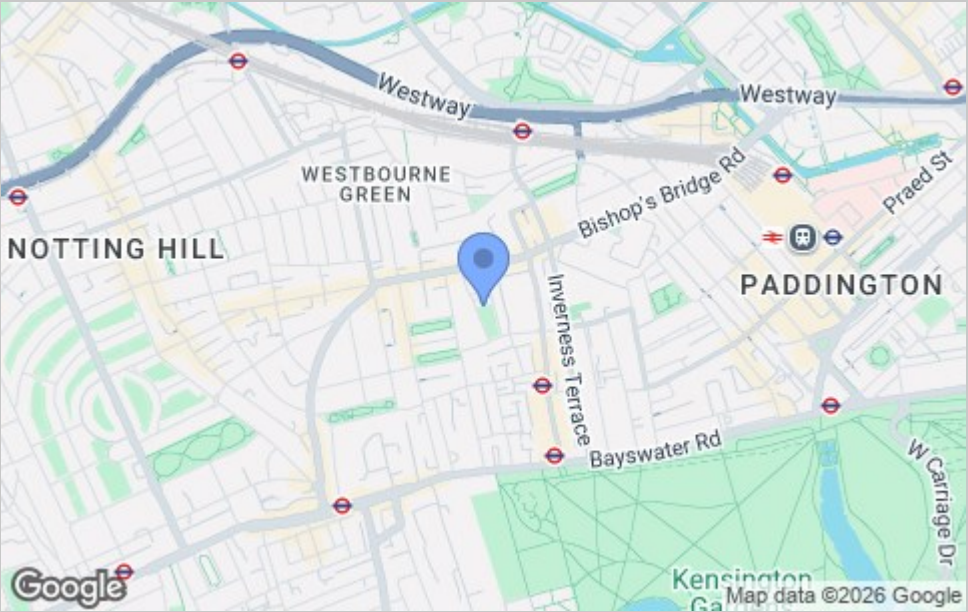
Floor Plan by capital group 020 8671 7722



Upper Ground Floor

Not to scale, for guidance only and must not be relied upon as a statement of fact. All measurements and areas are approximate only (and have been prepared in accordance with the current edition of the RICS Code of Measuring Practice).

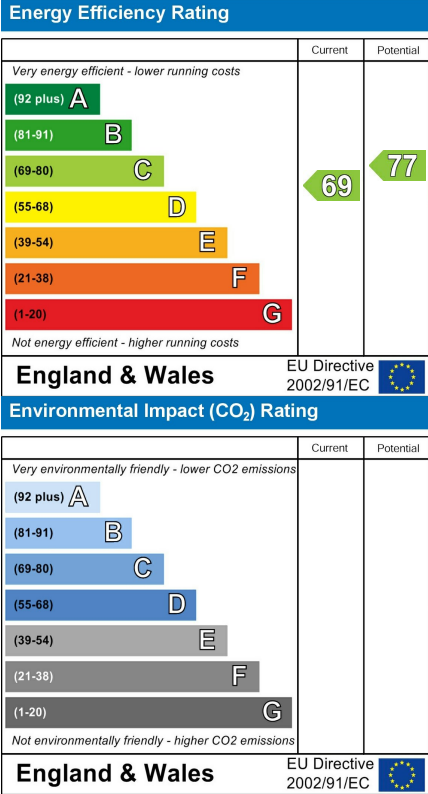
Area Map



Viewing

Please contact us on 020 7046 6275 if you wish to arrange a viewing appointment for this property or require further information.

Energy Efficiency Graph



These particulars, whilst believed to be accurate are set out as a general outline only for guidance and do not constitute any part of an offer or contract. Intending purchasers should not rely on them as statements of representation of fact, but must satisfy themselves by inspection or otherwise as to their accuracy. No person in this firms employment has the authority to make or give any representation or warranty in respect of the property.

020 7046 6275 • sales@charmillresidential.co.uk • 51 Maida Vale, Little Venice, London W9 1SD
charmillresidential.co.uk