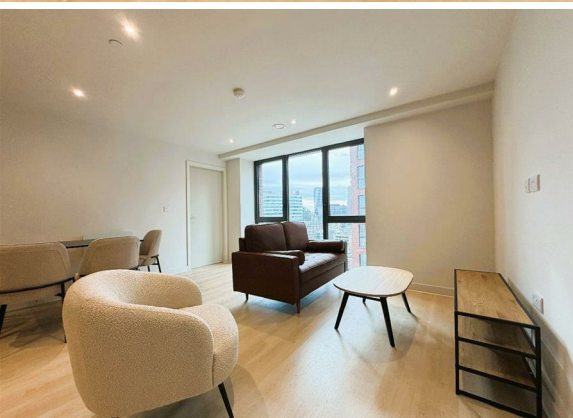




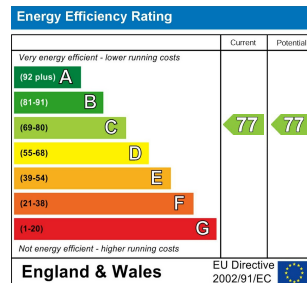
**2 Bed
Apartment
located in 7 Dutton
Street**

£1,600 PCM



 **NPP
RESIDENTIAL**

EPC Rating: C
Council Tax Band: E



DIRECTIONS

CONTACT

22 Lloyd Street
Manchester
M2 5WA

E: info@nppresidential.co.uk
T: 0161 639 0059
<https://nppresidential.co.uk/>

