



Shipbourne Road, Tonbridge, TN10 3EG

Guide Price £440,000

est. 1828
bracketts



- Attractive Bay Fronted Terraced Home
- Four Bedrooms
- Through Living Room / Dining Room
- Modern Fitted Kitchen
- Close Proximity To Town Centre & Mainline Station

Bracketts are delighted to offer for sale this well presented, bay fronted, four-bedroom terraced family home situated on the north side of Tonbridge. Internally the property comprises entrance hallway, through living room and dining room, modern fitted kitchen, utility area with back door leading to garden and family bathroom. Upstairs there are four good sized bedrooms. Externally to the rear is a private and enclosed garden with decked seating area, a further patio area and the rest laid to lawn. Towards the back of the garden is a good sized shed for storage and there is also a gate to the rear providing rear access to the garden from a side road. The property benefits from its close proximity to Tonbridge town centre where you will find a range of local shops, supermarkets, cafés, bars and restaurants, as well as Tonbridge mainline station which provides great links into London. We strongly recommend an internal viewing in order to appreciate the great amount of space that this lovely home has to offer.

Council Tax band: C

Tenure: Freehold

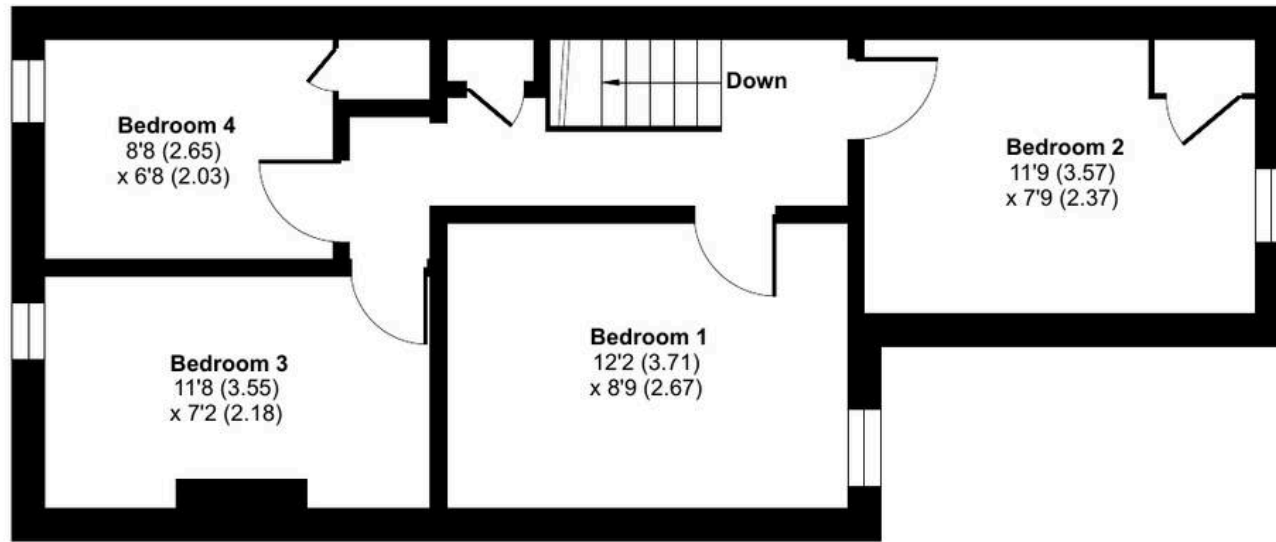




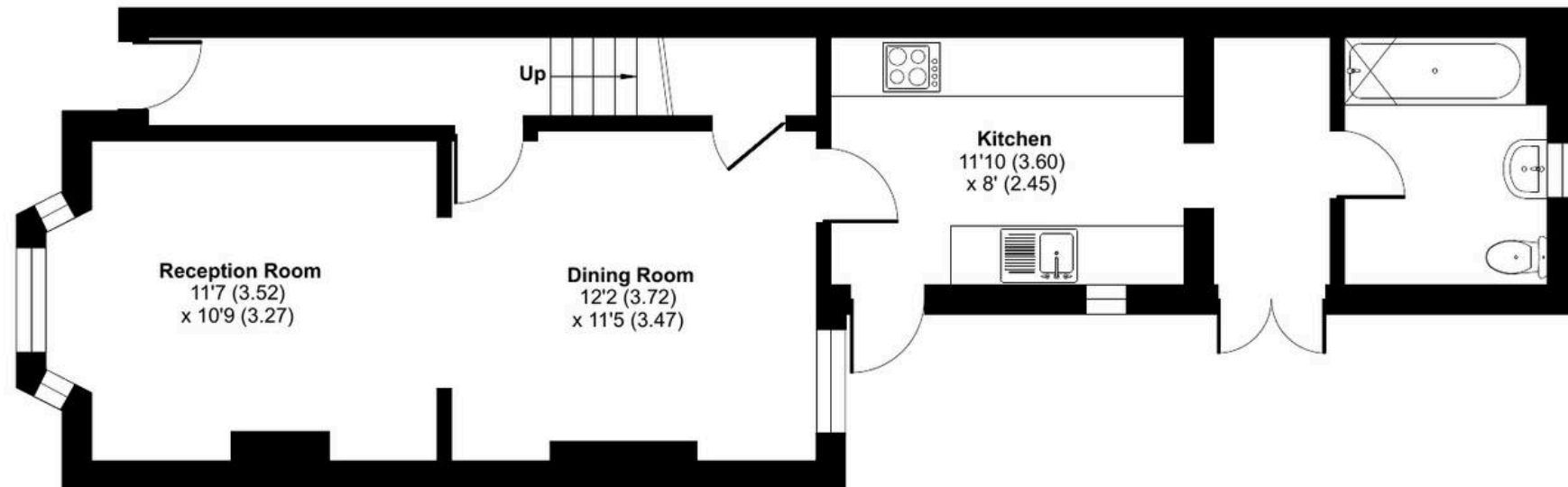
Shipbourne Road, Tonbridge, TN10

Approximate Area = 993 sq ft / 92.2 sq m

For identification only - Not to scale



FIRST FLOOR



GROUND FLOOR

