



## FLOWERS CLOSE, NW2

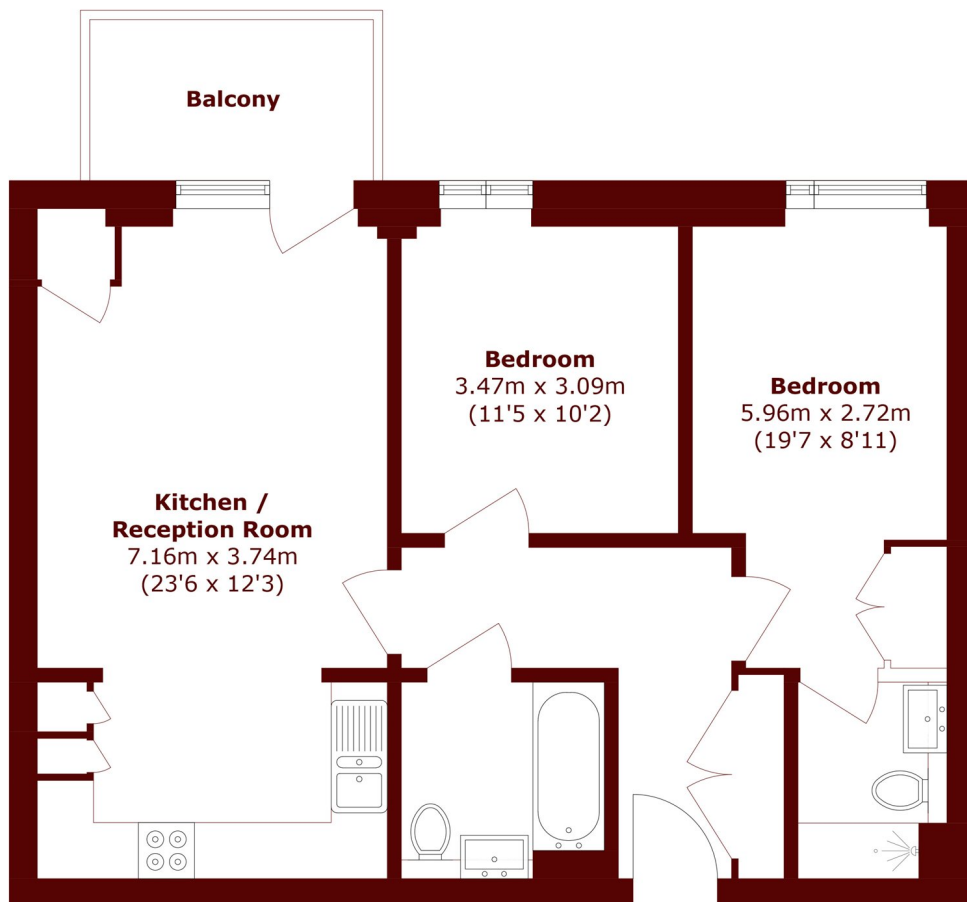
£395,000

This modern, two-bedroom, two-bathroom apartment is arranged over 748sqft comprising a spacious, open plan kitchen/reception room with direct access to a private balcony, two double bedrooms, a three-piece

Two Bedrooms  
Private Balcony  
748sqft

Close To Gladstone Park  
Modern Development  
Open Plan Living

# STEP INSIDE FLOWERS CLOSE



Total area (approx.): 69.5 sq. m (748.0 sq. ft)  
Balcony area (approx.): 5.2 sq. m (55.9 sq. ft)

**Willesden Green**  
020 8451 0420

Energy Rating: B We aim to make our particulars both accurate and reliable. However, they are not guaranteed; nor do they form part of an offer or contract. If you require clarification on any points then please contact us, especially if you're traveling some distance to view. Please note that appliances and heating systems have not been tested and therefore no warranties can be given as to their good working order

**MARSH &  
PARSONS**