



Victoria Bolt
estate agents POWERED BY **exp** UK

Leo Avenue, Sherford

Guide Price £310,000

🛏 3 🚿 3 🛋 1



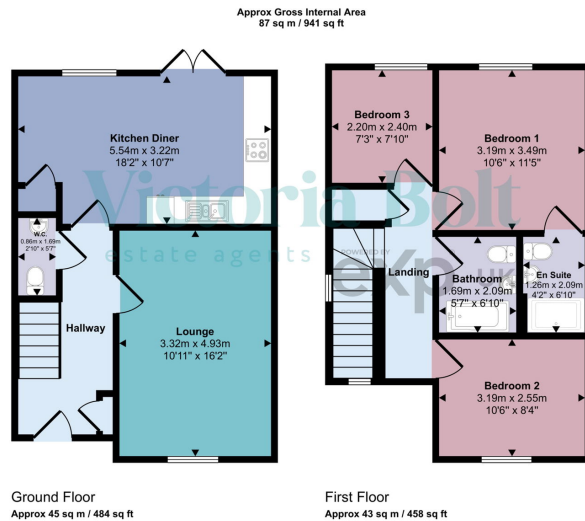
- Semi detached house a short walk from the country park
- Good size lounge with window shutters
- Downstairs WC
- Southerly facing rear garden
- 4 years remaining on the NHBC guarantee
- Three bedrooms (2dbs;1sng)
- Spacious kitchen/diner
- Master ensuite & family bathroom
- Parking for two cars
- Beautifully presented throughout



This beautifully presented semi-detached home is located in the popular new town of Sherford, just a short walk from the country park. Built in 2019 by Taylor Wimpey, the property benefits from approximately 4 years remaining on the NHBC warranty.

The 'Sycamore' design offers well-balanced and practical accommodation, comprising a spacious lounge, modern kitchen/diner, and a convenient downstairs WC. Upstairs are three bedrooms (two doubles and a single), including a master bedroom with en-suite, along with a contemporary family bathroom.

Externally, the property enjoys a southerly-facing rear garden and allocated parking for two vehicles. Presented in excellent condition throughout, this home must be viewed to fully appreciate.



This floorplan is only for illustrative purposes and is not to scale. Measurements of rooms, doors, windows, and any items are approximate and no responsibility is taken for any error, omission or mis-statement. Icons of items such as bathroom suites are representations only and may not look like the real items. Made with Made Snappy 360.

