



HEMMINGS HOMES



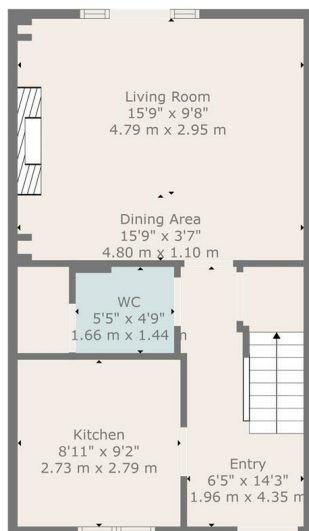
OFFERS OVER

**£230,000**

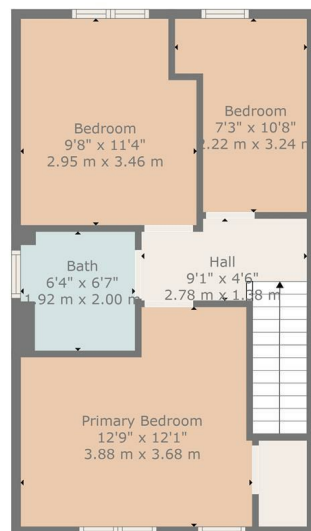
**Clover Crescent**

Glasgow, G72 6AD





Floor 1




Floor 2



**TOTAL: 878 sq. ft, 82 m<sup>2</sup>**  
 FLOOR 1: 439 sq. ft, 41 m<sup>2</sup>, FLOOR 2: 439 sq. ft, 41 m<sup>2</sup>  
 WALLS: 90 sq. ft, 8 m<sup>2</sup>  
 Floor Plan Created By Cubicase App. Measurements Deemed Highly Reliable But Not Guaranteed.



Energy Efficiency Rating		Current	Potential
Very energy efficient - lower running costs			
(92 plus)	A		
(81-91)	B		
(69-80)	C		
(55-68)	D		
(39-54)	E		
(21-38)	F		
(1-20)	G		
Not energy efficient - higher running costs			
Scotland		81	86
		EU Directive 2002/91/EC	



Agents Note: Whilst every care has been taken to prepare these particulars, they are for guidance purposes only. All measurements are approximate and are for general guidance purposes only and whilst every care has been taken to ensure their accuracy, they should not be relied upon and potential buyers/tenants are advised to recheck the measurements



**OFFICE ADDRESS**  
 376 Brandon Street  
 Motherwell  
 North Lanarkshire  
 ML1 1XA

**OFFICE DETAILS**  
 01698 263413  
[enquiries@hemmingshomes.co.uk](mailto:enquiries@hemmingshomes.co.uk)  
[hemmingshomes.co.uk](http://hemmingshomes.co.uk)