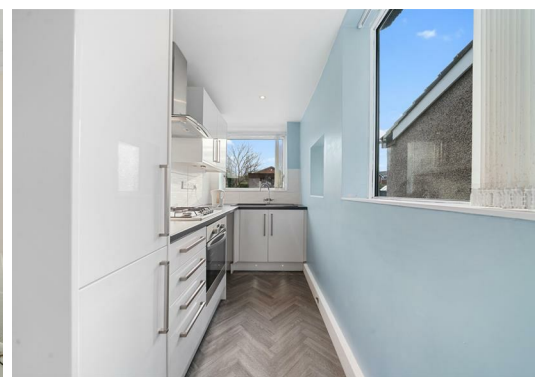
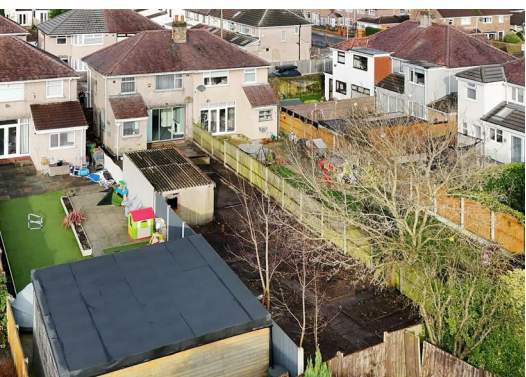




## Malvern Grove, Aintree Village, Liverpool, L10 2LA £220,000

Grosvenor Waterford are delighted to offer for sale this part renovated three bedroom semi detached house situated in a sought after cul de sac in Aintree Village. The accommodation briefly comprises; entrance hall, lounge, dining room and kitchen. To the first floor there are three bedrooms and a family bathroom. Outside there is a large rear garden and walled front garden with off road parking. The property benefits from electrical re-wire, double glazed windows and gas central heating and is offered with no ongoing chain. A viewing is definitely recommended for this great family home.



**Entrance Hall**

double glazed front door and window, radiator, new carpet, understairs cupboard, stairs to first floor

**Living Room**

10'9" x 10'11" (3.28m x 3.33m )

double glazed curved bay window to front aspect, radiator, new carpet, double sliding doors to dining room

**Dining Room**

12'9" x 10'7" (3.89m x 3.23m )

double glazed patio doors to rear garden, feature fireplace, radiator, new carpet

**Kitchen**

5'2" x 13'11" (1.58m x 4.25m )

newly fitted galley kitchen with a range of white high gloss base and wall cabinets with contrasting black worktops, integrated oven and gas hob with extractor over, integrated fridge freezer, tiled splashbacks, new vinyl flooring, inset ceiling spotlights, pantry cupboard, double glazed windows to side and rear aspects, door to rear garden

**First Floor**

**Landing**

double glazed window to side aspect, access to loft space

**Bedroom 1**

10'8" x 11'10" (3.26m x 3.62m )

double glazed curved bay window to front aspect, radiator, newly plastered ceiling

**Bedroom 2**

10'8" x 9'10" (3.27m x 3.02m )

double glazed window to rear aspect, radiator

**Bedroom 3**

7'4" x 8'0" (2.25m x 2.46m )

double glazed window to rear aspect, radiator, wall mounted boiler

**Family Bathroom**

7'4" x 7'1" (2.25m x 2.18m )

part renovated bathroom with new shower tray and mains shower, wash hand basin and low level w.c., part tiled walls, inset ceiling spotlights, built in cupboard, double glazed frosted window to front aspect

**Outside**

**Front Garden**

walled front with open access to block paved driveway

**Rear Garden**

large rear garden with gated access to front

**Garage**

double wooden doors to front, door to rear

**Additional Information**

Tenure : Freehold

Council Tax Band : C

Local Authority : Sefton

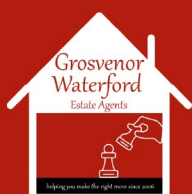
**Agents Note**

Every care has been taken with the preparation of these Sales Particulars, but they are for general guidance only and do not form part of any contract. The mention of any appliances, fixtures or fittings does not imply they are in working order or are included in the Sale. Photographs are reproduced for general information and all dimensions are approximate.

We are not qualified to verify tenure of the property and have assumed that the information given to us by the Vendor is accurate. Prospective purchasers should always obtain clarification from their own solicitor, or verify the tenure of this property for themselves by visiting [www.gov.uk/government/organisations/land-registry](http://www.gov.uk/government/organisations/land-registry).



Energy Efficiency Rating		
	Current	Potential
Very energy efficient - lower running costs		
(92 plus) A		
(81-91) B		
(69-80) C		
(55-68) D		
(39-54) E		
(21-38) F		
(1-20) G		
Not energy efficient - higher running costs		
	63	74
<b>England &amp; Wales</b> EU Directive 2002/91/EC		
Environmental Impact (CO <sub>2</sub> ) Rating		
	Current	Potential
Very environmentally friendly - lower CO <sub>2</sub> emissions		
(92 plus) A		
(81-91) B		
(69-80) C		
(55-68) D		
(39-54) E		
(21-38) F		
(1-20) G		
Not environmentally friendly - higher CO <sub>2</sub> emissions		
<b>England &amp; Wales</b> EU Directive 2002/91/EC		



197 Altway, Aintree, Liverpool L10 6LB  
Tel: 0151 526 7638  
Fax: 0151 526 7971