



Park Close | Wattisfield | Diss | IP22 1FX

Guide Price £409,950

**DURRANTS**  
SINCE 1853



## Key features

- New 3 bedroom house
- £10,000 personalisation package
- Opportunity to personalise the final finish such as the kitchen
- 12 month mortgage contribution. \*further info upon request\*
- Integral garage
- Separate utility room
- Ensuite to principal bedroom
- Driveway for off-road parking
- Exclusive small development
- Conveniently located.

## Description

Design Your Own Interior - £10,000

Personalisation Package Included plus 12 month mortgage contribution.

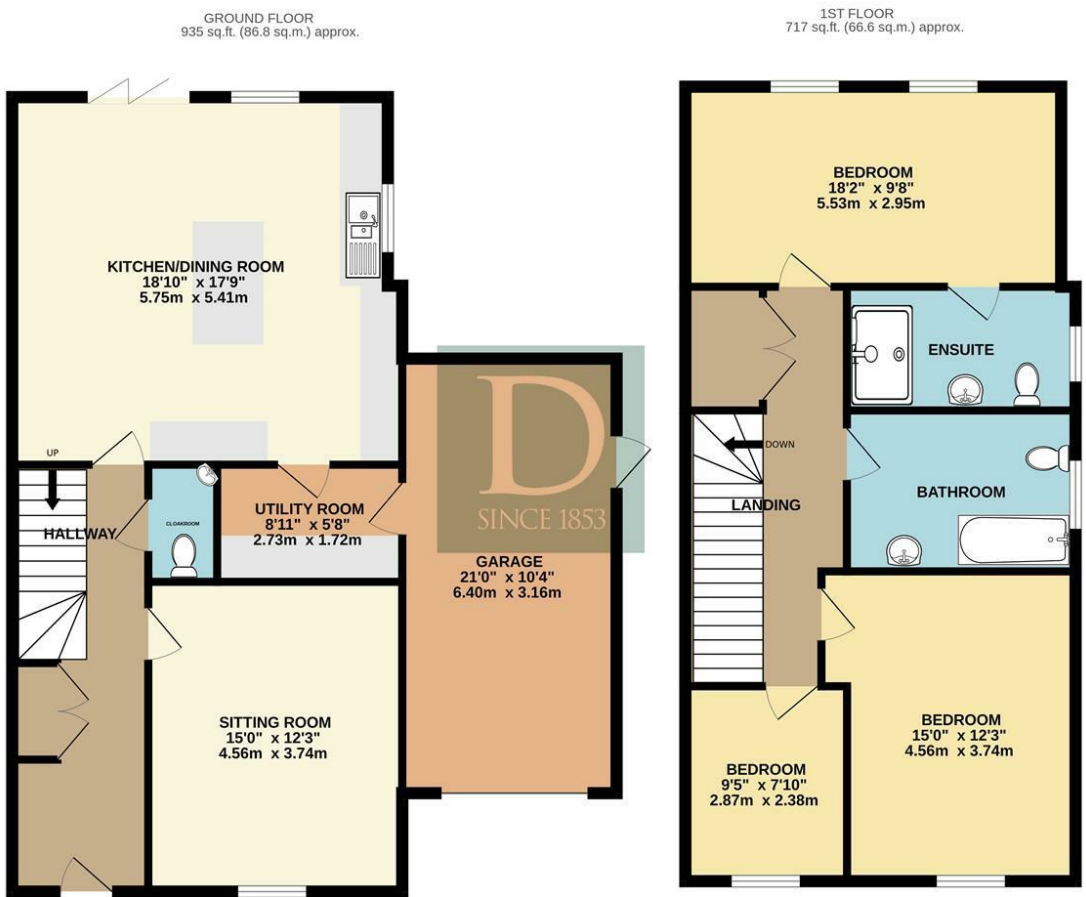


## Directions





Floor plans



TOTAL FLOOR AREA : 1652 sq.ft. (153.5 sq.m.) approx.

Whilst every attempt has been made to ensure the accuracy of the floorplan contained here, measurements of doors, windows, rooms and any other items are approximate and no responsibility is taken for any error, omission or mis-statement. This plan is for illustrative purposes only and should be used as such by any prospective purchaser. The services, systems and appliances shown have not been tested and no guarantee as to their operability or efficiency can be given.

Made with Metropix ©2025

Energy Efficiency Rating		
	Current	Potential
Very energy efficient - lower running costs		
(92 plus) A		
(81-91) B		
(69-80) C		
(55-68) D		
(39-54) E		
(21-38) F		
(1-20) G		
Not energy efficient - higher running costs		
England & Wales	EU Directive 2002/91/EC	



2b Market Hill  
Diss  
Norfolk  
IP22 4WH  
01379 642233  
diss@durrants.com  
<https://durrants.com/>