



**GASCOIGNE
HALMAN**

RUNCORN ROAD, BARNTON

THE AREAS LEADING ESTATE AGENT

|

A well-maintained and deceptively spacious two double bedroom detached bungalow, featuring a generous sized conservatory overlooking the rear garden.

Set back from the road, the property benefits from a substantial driveway and well-established front garden with access to the rear. An internal viewing will reveal; L-shaped entrance hallway, spacious living room with fireplace, and a well-appointed dining kitchen with direct access into the conservatory creating an ideal space for both everyday living and entertaining.

There are two well-proportioned double bedrooms, all served by a 3-piece bathroom suite with additional walk-in shower for added convenience. The home is further enhanced by gas central heating and double glazing throughout.

A low-maintenance designed paved rear garden, complete with a garden shed, offers a pleasant backdrop to this attractive detached home.

DIRECTIONS

SAT NAV: CW8 4HS

KNUTSFORD OFFICE

01565 750 900

knutsford@gascoignealman.co.uk

26 Princess Street, Knutsford, WA16 6BU

LOCATION

Barnton is a civil parish and village, just outside the town of Northwich, in the unitary authority of Cheshire West and Chester and the ceremonial county of Cheshire, England. It lies north and east of the Trent and Mersey Canal which goes through two tunnels (Barnton and Saltersford) to the west of the village.

TENURE

Freehold

SERVICES (NOT TESTED)

All mains services are connected but have not been tested and you are advised to make your own enquiries and/or inspections.

LOCAL AUTHORITY

Cheshire West & Chester Council Tax Band: B

ENERGY PERFORMANCE RATING

TBC

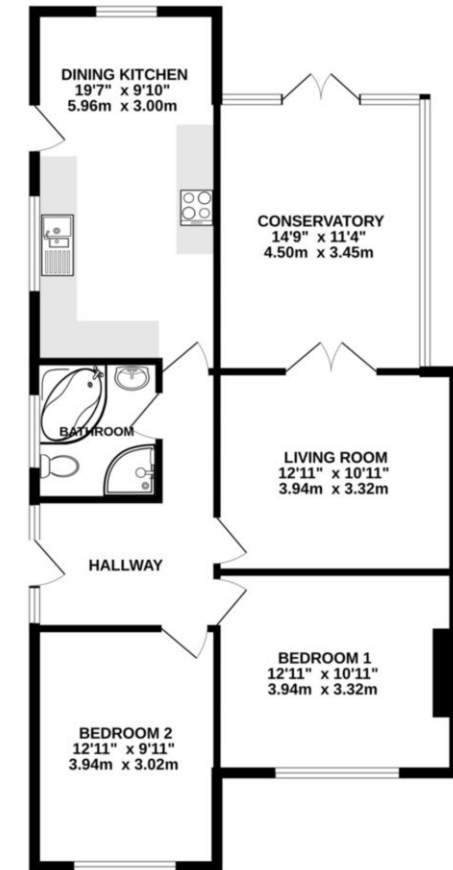
TOTAL FLOOR AREA

904 SQFT APPROX

VIEWINGS

Viewing strictly by appointment through the Agents.

GROUND FLOOR
904 sq.ft. (84.0 sq.m.) approx.



TOTAL FLOOR AREA: 904 sq.ft. (84.0 sq.m.) approx.
Measurements are approximate. Not to scale. Illustrative purposes only
Made with Metropix G2026

**GASCOIGNE
HALMAN**

NOTICE Gascoigne Halman for themselves and for the vendors or lessors of this property whose agents they are give notice that: (i) the particulars are set out as a general outline only for the guidance of intending purchasers or lessees, and do not constitute, nor constitute part of, an offer or contract; (ii) all descriptions, dimensions, references to condition and necessary permissions for use and occupation, and other details are given in good faith and are believed to be correct but any intending purchasers or tenants should not rely on them as statements or representations of fact but must satisfy themselves by inspection or otherwise as to the correctness of each of them; (iii) no person in the employment of Gascoigne Halman has any authority to make or give any representation or warranty whatever in relation to this property.