

Buy. Sell. Rent. Let.



Florina Place, Scartho, Grimsby



When it comes to
property it must be


lovelle



£180,000



Immaculately presented three-bedroom terraced house in popular a popular area, featuring a stylish lounge, modern dining kitchen with cloakroom, two double bedrooms plus single/office, contemporary bathroom, driveway parking, well-stocked rear garden, uPVC double glazing, gas central heating and a no chain position ideal for first-time buyers. **The house is dressed and furniture, appliances etc can be available by separate negotiation.**

Key Features

- Mid-Link House
- Perfect Starter Home
- Superbly Presented
- Three Bedrooms & Bathroom
- Lounge & Modern Kitchen/Diner
- Landscaped Garden, Off-Road Parking
- EPC rating B
- Tenure: Freehold





Lovelle offer to market this stunning three-bedroom mid-link house in the popular Springfield estate of Scartho, ideally suited to first-time buyers. The property benefits from uPVC double glazing, gas central heating and a drive to the front providing off-road parking, together with a well-stocked beautiful rear garden.

To the ground floor, a stylishly presented reception room provides a trendy lounge space with stairs leading to the first floor. The modern kitchen is fitted with contemporary units and worktop with sink, oven and hob, and plumbing for a washing machine, with sufficient space for a dining table, creating a practical area for everyday meals. Off the kitchen is a useful cloakroom with WC and sink. The house is dressed and furniture, appliances etc can be available by separate negotiation.

To the first floor are three bedrooms: two doubles, one of which benefits from a built-in storage cupboard, and a single bedroom suitable as a child's room or home office. The bathroom includes a shower over the bath, WC and sink with vanity unit, providing useful storage and a clean, modern finish.

The local area is well regarded for its local amenities, ease of access to the nearby hospital, nearby shops and services in both Scartho village, along the main routes into Grimsby. The area also offers access to nearby schools, making it a practical location for households requiring educational facilities.

Public transport links connect the area with Grimsby town centre and beyond. Grimsby Town railway station provides services towards regional hubs such as Manchester and Sheffield, with typical journey times to Sheffield of around 1 hour 40 minutes via connecting routes. Road links from Scartho Top offer convenient access to the A16 and wider Lincolnshire network.

Further benefits include the no chain position, show home standard presentation and driveway to the front. This terraced house presents a well-finished home in a popular Grimsby location, ready for a new owner to move in and personalise.

Disclaimer

We endeavour to make our sales particulars accurate and reliable, however, they do not constitute or form part of an offer or any contract and none is to be relied upon as statements of representation or fact. Any services, systems and appliances listed in this specification have not been tested by us and no guarantee as to their operating ability or efficiency is given. All measurements have been taken as a guide to prospective buyers only, and are not precise. If you require clarification or further information on any points, please contact us, especially if you are travelling some distance to view.

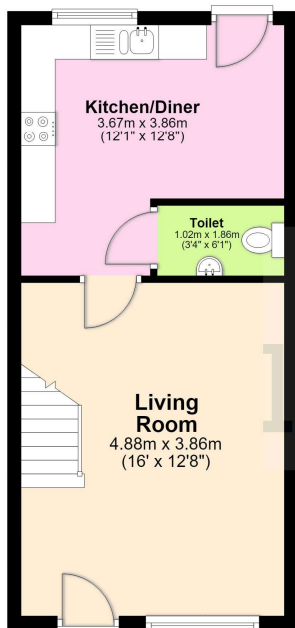
Mobile and broadband

It is advised that prospective purchasers visit checker.ofcom.org.uk in order to review available wifi speeds and mobile connectivity at the property.



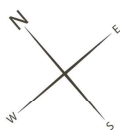
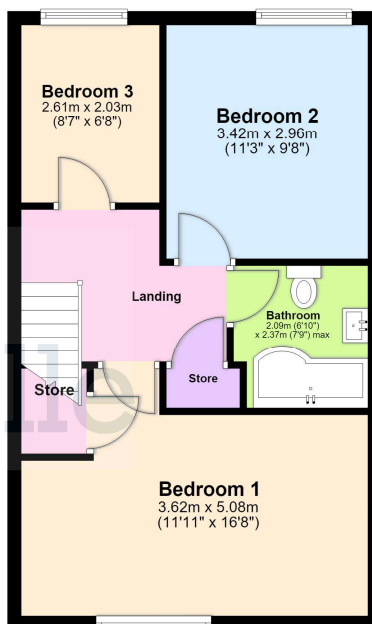
Ground Floor

Approx. 33.6 sq. metres (361.4 sq. feet)



First Floor

Approx. 44.9 sq. metres (483.8 sq. feet)



Total area: approx. 78.5 sq. metres (845.2 sq. feet)

The provided floor plan is intended for general informational purposes only and may not accurately represent the exact dimensions, layout, or features of the property. The floor plan should not be relied upon for making decisions about purchasing, renting, or modifying the property. Actual measurements and features may vary. It is recommended that interested parties conduct a physical inspection of the property to verify the accuracy of the floor plan and obtain specific information about the property's condition, amenities, and any other relevant details.

Plan produced using PlanUp.



When it comes to **property**
it must be

lovelle

01472 251918

grimsby@lovelle.co.uk