



**Wells Street, WIT**  
£1,000,000

**Dexters**



## Wells Street, WIT

A bright two double bedroom, two bathroom apartment. Located on the eighth floor of a building with concierge and under building parking. Extensively refurbished with a bespoke kitchen-diner and open living space which leads to a balcony.

Both bedrooms are accommodate double bedrooms and have fitted wardrobes, the main bedroom has an Ensuite shower room, there is a guest WC/shower room. There is direct lift access to the under building parking garage which has a designated space.

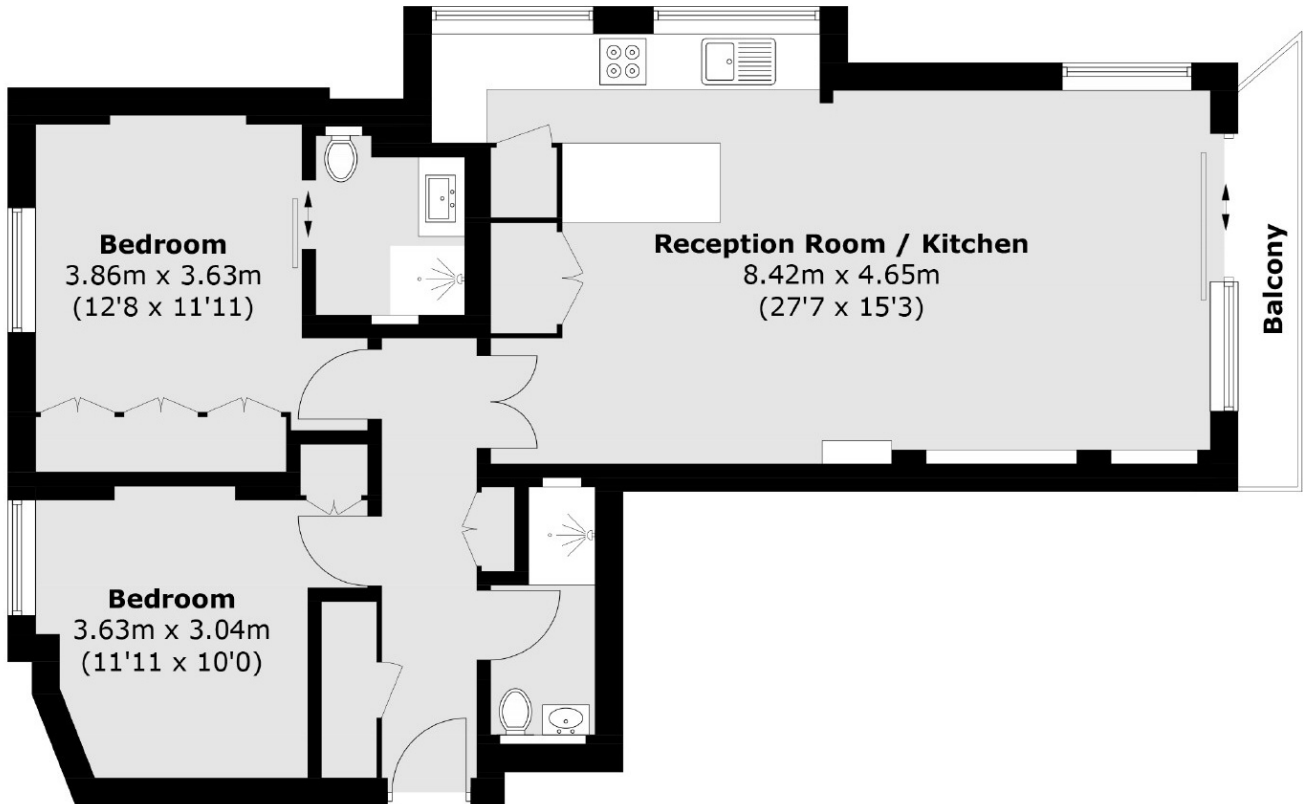
Close to the restaurants of Charlotte Street, retail at Oxford Street, Bond Street and Regents Street, Theatreland and the beautiful open spaces of Regents Park.

### Features

- 8th Floor With Lift
- Two Double Bedrooms
- Two Shower Rooms
- Reception With Balcony
- Under Building Parking Space
- Concierge 24-7



# Wells Street, London, W1T



## Eighth Floor

Total area (approx.): 72.2 sq. m (777.1 sq. ft)

Balcony area (approx.): 2.9 sq. m (31.2 sq. ft)