



Amington Road, Tamworth

burchell
edwards



Property Description

This stylish and modern home sits on the popular Amington Road and offers lots of living space and great sized bedrooms. The home begins with a welcoming entrance hall, a spacious lounge, gorgeous kitchen diner and a guest W.C on the ground floor.

The first floor has two double bedrooms and a family bathroom with the second floor being dedicated to the principal bedroom that has both a dressing room and an en suite.

Take a look around with our virtual tour and call us today to see inside!

Hall

Stairs to the first floor and door to lounge.

Lounge

Double glazed window to the front and central heating radiator.

Kitchen

Double glazed window to the rear, wall and base units with work surfaces over, space for a dining table, oven and hob, space for appliances and french doors to the rear garden.

Guest W.C

Low level W.C and wash hand basin.

Bedroom Two

Double glazed window to the rear and radiator.

Bedroom Three

Double glazed window to the front and radiator.

Bedroom One

Double glazed windows to the front and rear, radiator, walk in wardrobe and door to en suite.

En Suite

Walk in shower, low level W.C. and wash hand basin.

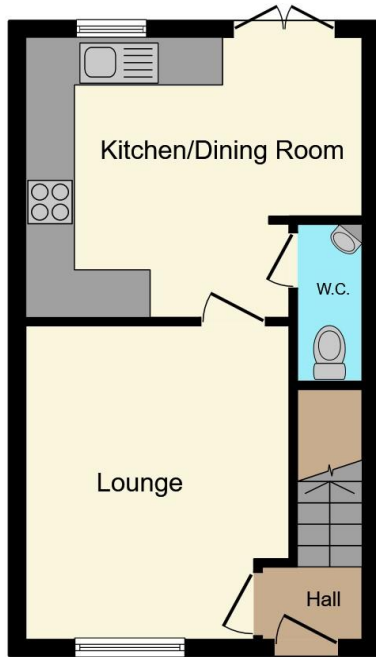
Garden

Private rear garden with a patio and lawn.

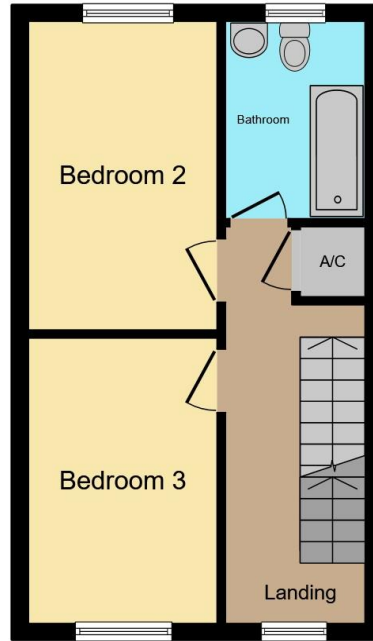




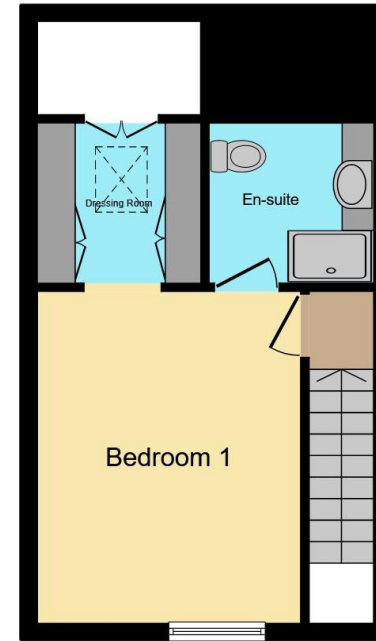




Ground Floor



First Floor



Second Floor

This floor plan is for illustrative purposes only. It is not drawn to scale. Any measurements, floor areas (including any total floor area), openings and orientation are approximate. No details are guaranteed, they cannot be relied upon for any purpose and they do not form part of any agreement. No liability is taken for any error, omission or misstatement. A party must rely upon its own inspection(s). Powered by www.propertybox.io



To view this property please contact Burchell Edwards on

T 01827 66400
E tamworth@burchelledwards.co.uk

1 Bolebridge Street
TAMWORTH B79 7PA

EPC Rating: D Council Tax
Band: C

Tenure: Freehold

view this property online burchelledwards.co.uk/Property/TAM207584



1. MONEY LAUNDERING REGULATIONS Intending purchasers will be asked to produce identification documentation at a later stage and we would ask for your co-operation in order that there will be no delay in agreeing the sale. 2. These particulars do not constitute part or all of an offer or contract. 3. The measurements indicated are supplied for guidance only and as such must be considered incorrect. Potential buyers are advised to recheck measurements before committing to any expense. 4. We have not tested any apparatus, equipment, fixtures, fittings or services and it is in the buyers interest to check the working condition of any appliances.

Burchell Edwards is a trading name of Connells Residential which is registered in England and Wales under company number 1489613, Registered Office is Cumbria House, 16-20 Hockliffe Street, Leighton Buzzard, Bedfordshire, LU7 1GN. VAT Registration Number is 500 2481 05.

See all our properties at www.burchelledwards.co.uk | www.rightmove.co.uk | www.zoopla.co.uk

Property Ref: TAM207584 - 0002