

CHIPPINGS

SOUTHAM LANE, SOUTHAM, CHELTENHAM, GL52 3NY

 Charles Lear



CHIPPINGS



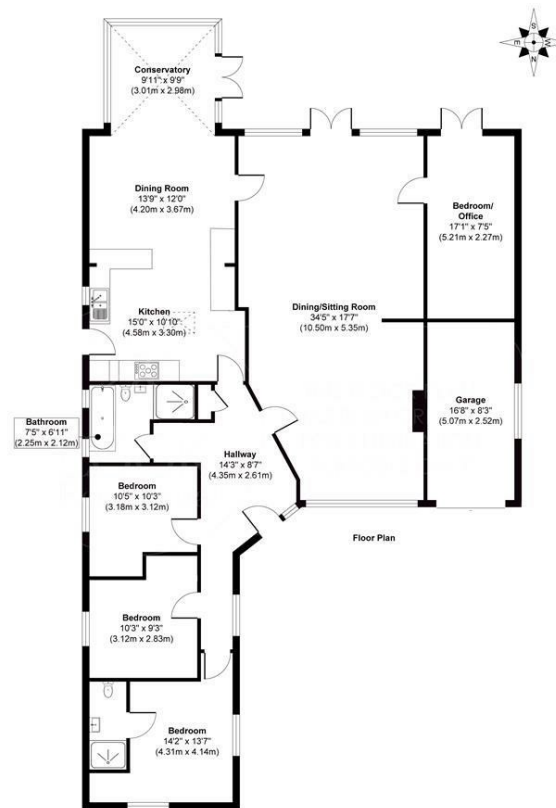
Situation





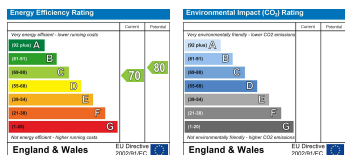
General Information





Approx. Gross Internal Floor Area 1893 sq. ft / 175.92 sq. m

Produced by Elements Property



103 Promenade, Cheltenham, Gloucestershire, GL50 1NW

T: 01242 222722 | E: sales@charleslear.co.uk | W: www.charleslear.com