



## Portland Road

Kingston, KT1 2SH

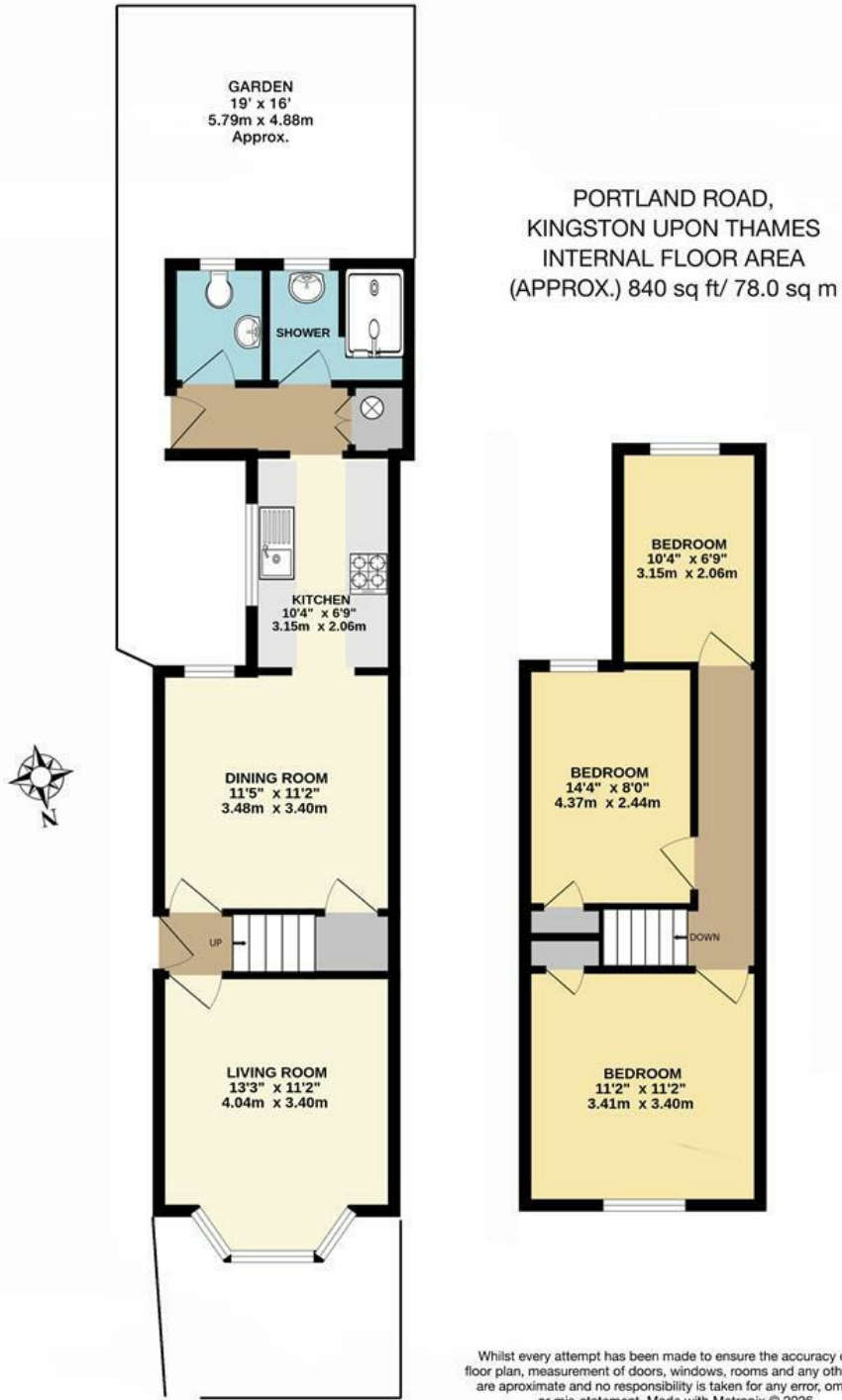
Guide Price £625,000

A three bedroom semi-detached Victorian house in a quiet residential location. The property is an ideal home for someone to put their own stamp on it and offers two reception rooms downstairs, with kitchen and shower room and W/C to the rear extension. Upstairs there are 3 bedrooms. The paved rear garden is southerly facing and has the potential to be a lovely space to relax and unwind. Offered to market with no onward chain.

Material Info: Brick Walls. Slate Tiles. Mains Water / Electricity / Sewerage. Heating: Gas Mains. Mobile coverage Indoor: Good Outdoor: Good. Kingston Council Tax Band D.

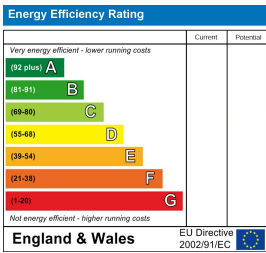
- Victorian Property
- Three Bedrooms
- South Facing Paved Garden
- Quiet Residential Location
- Semi Detached
- Two Reception Rooms
- In Need of Modernisation
- Chain Free

# Floor Plan



Whilst every attempt has been made to ensure the accuracy of this floor plan, measurement of doors, windows, rooms and any other items are approximate and no responsibility is taken for any error, omission or mis-statement. Made with Metropix © 2026.

# Energy Efficiency Graph



These particulars, whilst believed to be accurate are set out as a general outline only for guidance and do not constitute any part of an offer or contract. Intending purchasers should not rely on them as statements of representation of fact, but must satisfy themselves by inspection or otherwise as to their accuracy. No person in this firm's employment has the authority to make or give any representation or warranty in respect of the property.