



Standen Road, SW18

£750,000

Dexters



Standen Road, SW18

A beautifully presented split-level apartment within the unique, Tiffany Heights development. Offering over 1,090 sq. Ft. Of stylish living space within a warehouse-style factory conversion.

The property features an impressive open-plan kitchen/reception room with striking industrial-style windows, excellent natural light and a contemporary fitted kitchen with central island, creating a superb entertaining space. There are two generous double bedrooms, including a principal bedroom with private balcony and a second bedroom with direct access to a large private terrace. The apartment also benefits from two modern bathrooms and good storage throughout.

The property also benefits from a private off street parking space.

Tiffany Heights is ideally located on Standen Road in the heart of Southfields, moments from the cafés, restaurants and local amenities of Replingham Road and Southfields Village. Excellent transport links are available via Southfields Underground Station (District Line), approximately 0.2 miles away, providing direct access into Central London.

Features

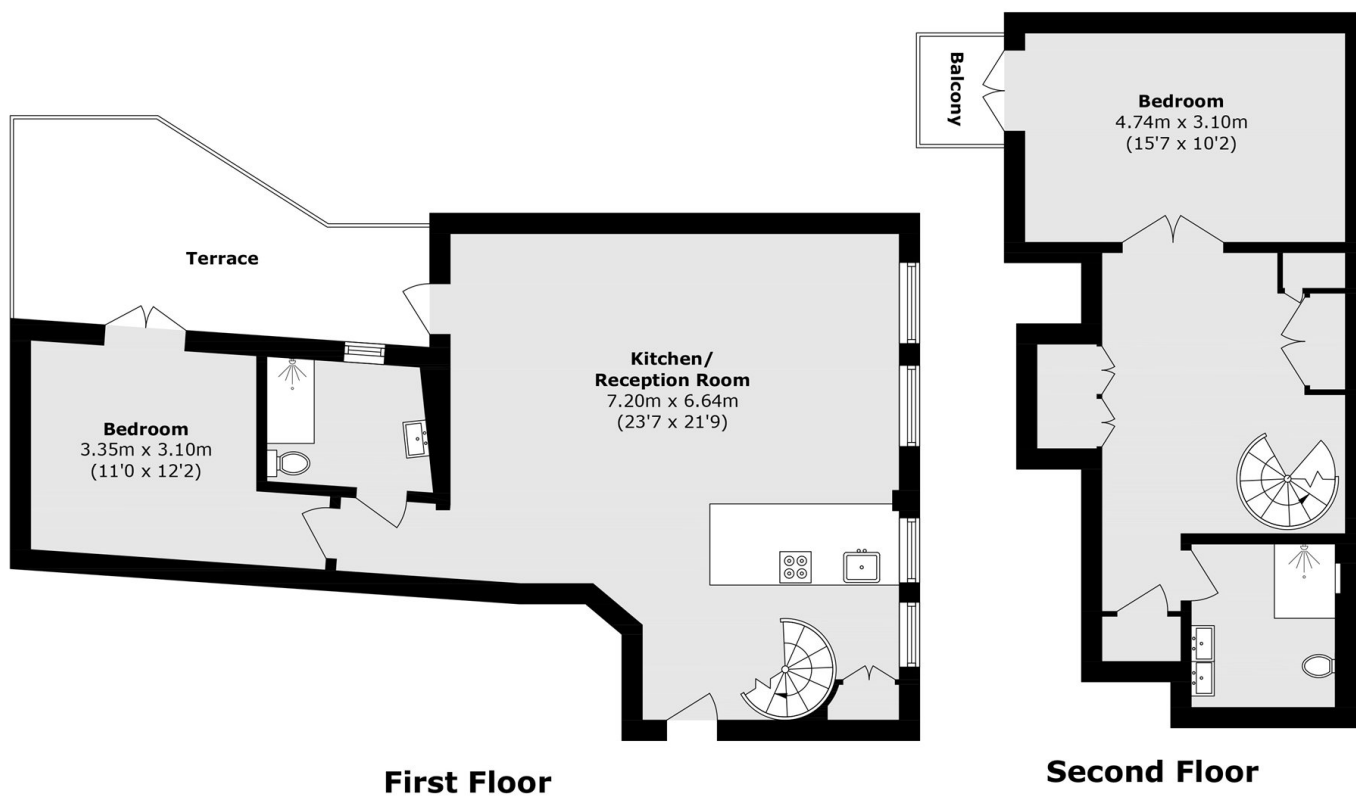
- 1092 sq. ft
- Off Street Parking Space
- Two Bedrooms
- Two Bathrooms
- Private Roof Terrace
- 7 Min Walk to Southfields







Standen Road, London, SW18



Total area (approx.): 101.5 sq. m (1092.5 sq. ft)
Terrace area (approx.): 15.5 sq. m (166.8 sq. ft)
Balcony area (approx.): 2.2 sq. m (23.7 sq. ft)