



Grove End Road, NW8

£726 Per week

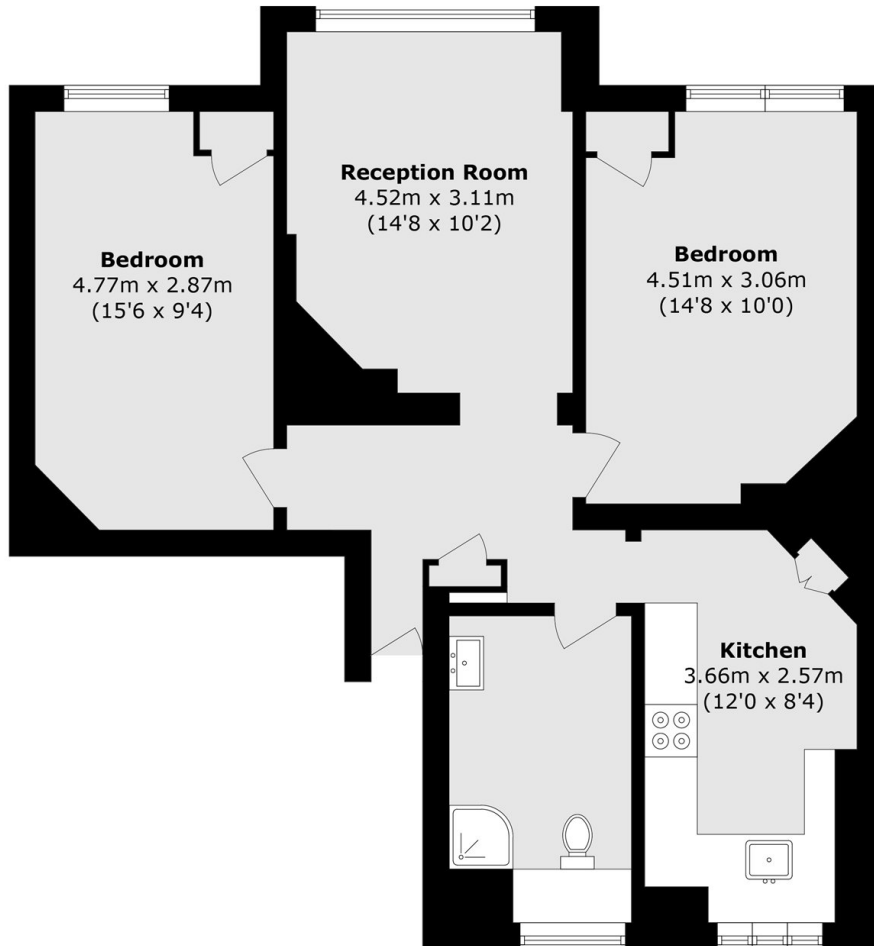
A beautifully presented two bedroom apartment, set on the second floor, of this highly sought after portered building in St Johns Wood. The property benefits from a bright reception room, separate kitchen, two double bedrooms, lift access and wooden flooring throughout.

Ideally located for all local amenities of St Johns Wood (Jubilee Line) and within walking distance of Lords Cricket Ground

Features

- Two Double Bedrooms
- One Bathroom
- Portered Building
- Wooden Floors
- Lift Access
- Communal Gardens

Grove End Road, London, NW8



Total area (approx.): 69.8 sq. m (751.3 sq. ft)