


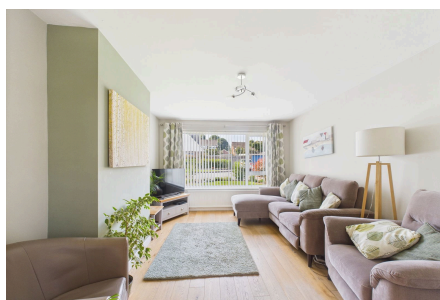


Gorse End, Horsham

Guide Price £500,000

 4  2  3



An attractive Family Home at the end of a Small Cul De Sac, that has been Extended to provide Accommodation Over Three Floors, boasting an En Suite to the Principal Bedroom, Two Reception Rooms and a Conservatory.

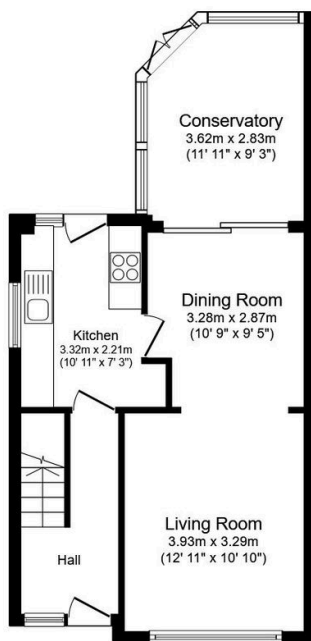
Tenure: Freehold

Council Tax: Band D

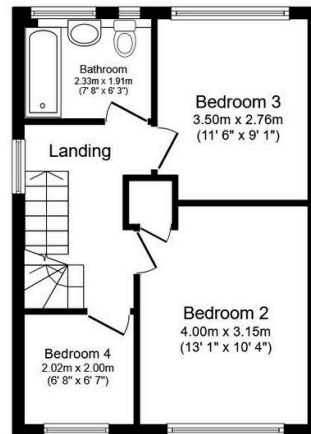
EPC Rating: Current D - Potential C

Key Features

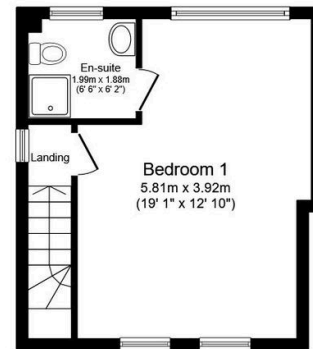
- Watch Our Video Tour
- Extended Family Home
- Accommodation Across Three Floors
- Principal Bedroom With En Suite
- Cul De Sac Location
- Popular School Catchment
- Close To Local Shops
- 0.7 Miles From Littlehaven Station
- Two Reception Rooms
- 12ft x 9ft Conservatory



Ground Floor
Floor area 47.9 sq.m. (516 sq.ft.)



First Floor
Floor area 38.5 sq.m. (415 sq.ft.)



Second Floor
Floor area 29.6 sq.m. (319 sq.ft.)

Total floor area: 116.1 sq.m. (1,250 sq.ft.)

This floor plan is for illustrative purposes only. It is not drawn to scale. Any measurements, floor areas (including any total floor area), openings and orientations are approximate. No details are guaranteed, they cannot be relied upon for any purpose and do not form any part of any agreement. No liability is taken for any error, omission or misstatement. A party must rely upon its own inspection(s). Powered by www.Propertybox.io