

# Jefferson House

West Drayton • Middlesex • UB7 9FL  
PCM: £1,400 PCM



coopers  
est 1986

A contemporary ONE DOUBLE BEDROOM Apartment situated in a private development with 24 hour concierge and Gymnasium. Located within a short walk to West Drayton Train station and high street. Heathrow, The M4 and the M25 are just a few minutes drive. Accommodation; One bedroom, Large lounge with doors leading to private patio area, Fully fitted kitchen with appliances. Benefits; Double glazing, Entry-phone system, Beautiful communal gardens.  
UNFURNISHED

Concierge

Gym

Walking Distance to West Drayton Station

Great Local Amenities

Residential Parking

Council Tax Band C

Easy access to M4/M25

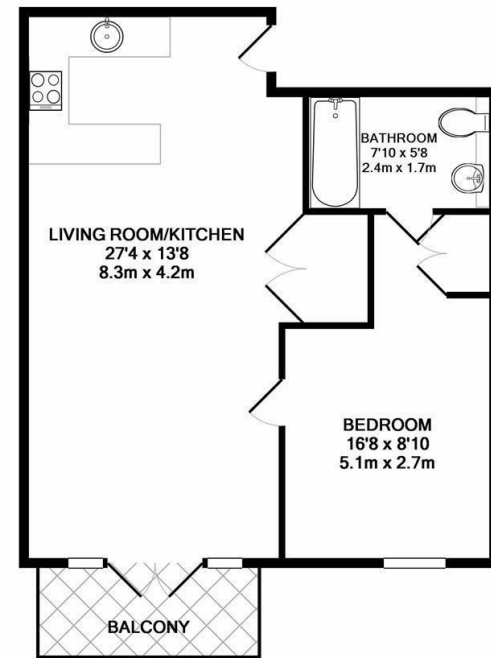
Nearby to Heathrow Airport

Close to Stockley Park

Close to West Drayton High Street

**Available Date**

9th June 2026



TOTAL APPROX. FLOOR AREA 590 SQ.FT. (54.9 SQ.M.)

Whilst every attempt has been made to ensure the accuracy of the floor plan contained here, measurements of doors, windows, rooms and any other items are approximate and no responsibility is taken for any error, omission, or mis-statement. This plan is for illustrative purposes only and should be used as such by any prospective purchaser. The services, systems and appliances shown have not been tested and no guarantee as to their operability or efficiency can be given  
Made with Metropix ©2017



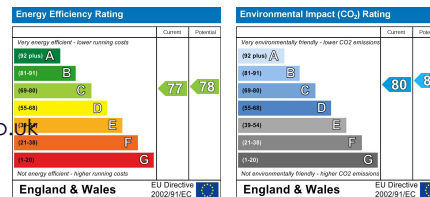
**coopers**  
est 1986

**01895 257 566**

**1 Vine Street, Uxbridge,  
Middlesex, UB8 1QE**

propertymanagement@coopersresidential.co.uk

**CoopersResidential.co.uk**



Important Notice: These particulars, whilst believed to be accurate are set out as a general outline only for guidance and do not constitute any part of an offer or contract. Intending purchasers should not rely on them as statements or representation of fact, but must satisfy themselves by inspection or otherwise has the authority to make or give any representation or warranty in respect of the property.