



## Seaton Close, SE11

£450,000

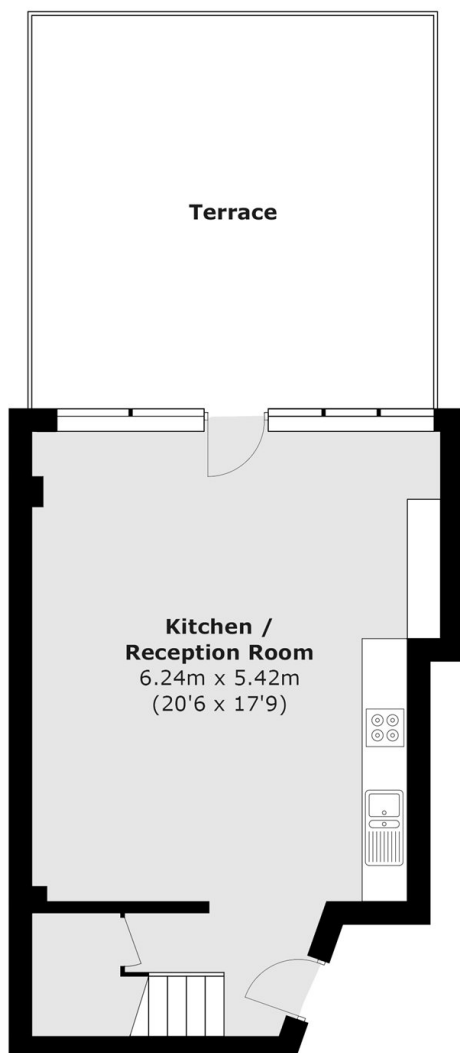
A fantastic two double bedroom split level flat. Flooded with natural light this well proportioned home has a spacious open plan reception room and kitchen which comfortably accommodates both living and dining areas, enjoying direct access onto a large private terrace. The first floor has two double bedrooms, built in wardrobe's and both are well served by a beautifully finished shower room. Sold with no onward chain.

Located in the centre of Kennington, just moments from pubs, eateries and local shops. High in community spirit, transport links are unbeatable with Kennington, Oval, Lambeth North and Vauxhall stations close by, within a short stroll of Kennington Park and within easy reach of the City and West End..

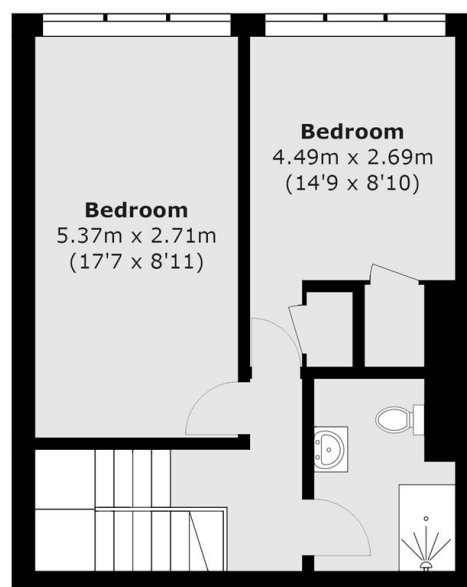
### Features

- Two Double Bedrooms
- Large Private Terrace
- Split Level
- Excellent Condition
- No Onward Chain
- Central Location

# Seaton Close, London, SE11



**First Floor**



**Second Floor**

Total area (approx.): 78.5 sq. m ( 844.9 sq. ft)  
Terrace area: 27.7 sq. m ( 298.1 sq. ft)