



## Castle Hill Road, Hastings TN34 3RH

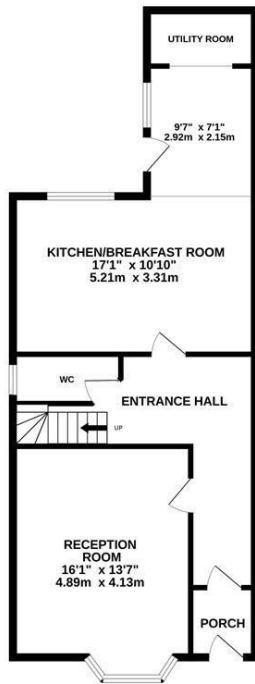
Offers in excess of £675,000



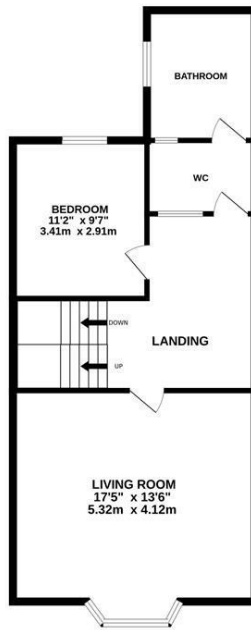
Set in an elevated position above the town, this handsome four-bedroom, THREE-STOREY HOUSE enjoys far-reaching views across Hastings and out to sea, stretching along the coastline towards Beachy Head. It sits within EASY-WALKING DISTANCE OF THE BEACH, Hastings Old Town and the town centre, where there is a mainline railway station with connections to London.

The house retains a WONDERFUL SENSE OF CHARACTER, with original sash windows, exposed floorboards, feature fireplaces and high ceilings running throughout the accommodation. Entry is on the ground floor where a bay-fronted reception room is currently arranged as a dining room. An OPEN FIREPLACE forms the focal point of the space, with bespoke cabinetry fitted neatly into the alcoves. A BEAUTIFULLY MADE WOODEN KITCHEN spans the rear of the property offering plenty of room for a

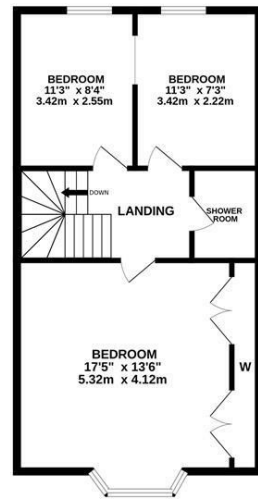
GROUND FLOOR  
715 sq.ft. (66.4 sq.m.) approx.



1ST FLOOR  
683 sq.ft. (63.5 sq.m.) approx.



2ND FLOOR  
608 sq.ft. (56.5 sq.m.) approx.



TOTAL FLOOR AREA: 2006 sq.ft. (186.3 sq.m.) approx.

Whilst every attempt has been made to ensure the accuracy of the floorplan contained here, measurements of doors, windows, rooms and any other items are approximate and no responsibility is taken for any error, omission or mis-statement. This plan is for illustrative purposes only and should be used as such by any prospective purchaser. The services, systems and appliances shown have not been tested and no guarantee as to their operability or efficiency can be given.  
Made with Metropix ©2026

