



Calthorpe Gardens

£2,300 Per Month

Cosway Estates are pleased to offer for rent this lovely large well-proportioned three double bedroom ground floor flat, making it an ideal home for families or professionals seeking both comfort and convenience in a prime location.

The property boasts a bright and spacious reception and dining area, perfect for both everyday living and entertaining guests. A well-appointed fitted kitchen provides ample storage and workspace, complementing the practical and flexible layout throughout. The accommodation further comprises three well-sized double bedrooms, each offering plenty of natural light, along with a family bathroom designed for comfort and functionality.

Conveniently located within close proximity to a range of highly regarded local schools, shops, and places of worship, the property also benefits from excellent transport links (close to Stanmore tube station), providing easy access to surrounding areas and central London. AVAILABLE NOW. Viewings highly advised.

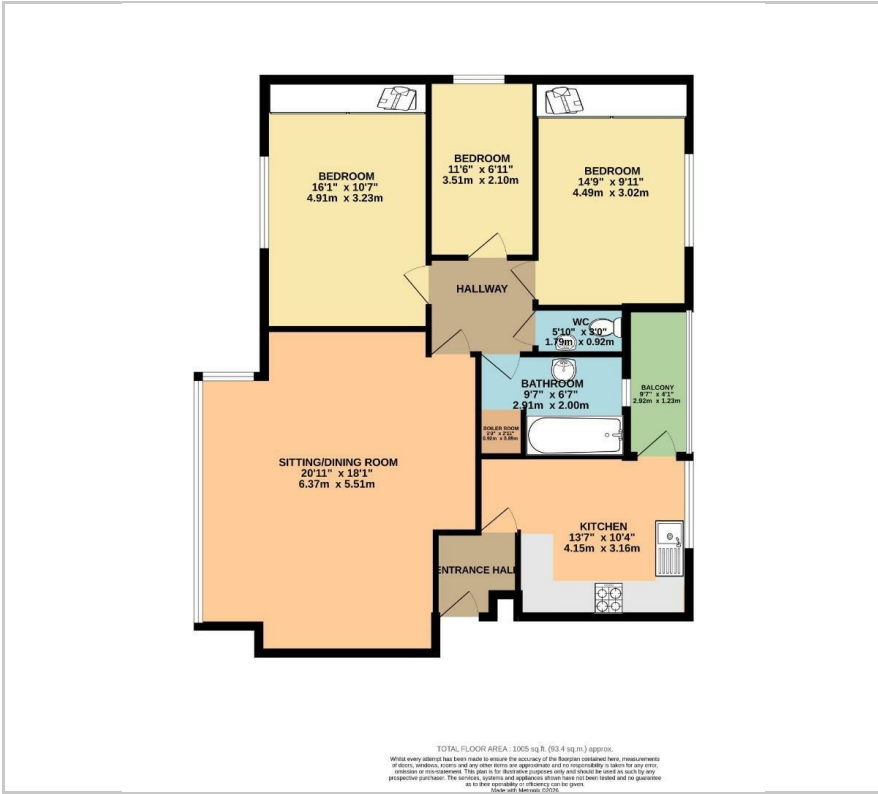
- Three double bedroom ground floor flat
- Approx. 1,033 sq ft of accommodation
- Spacious reception / dining room
- Well fitted kitchen with ample storage
- Generous room proportions throughout
- Ideal for families or professionals
- Bright and well laid out property
- Excellent ground floor access
- Sought-after Calthorpe Gardens location

Viewing

Please contact our Mill Hill Office on 02089590011 if you wish to arrange a viewing appointment for this property or require further information.



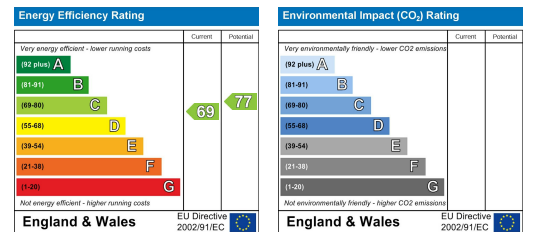
Floor Plan



Area Map



Energy Efficiency Graph



These particulars, whilst believed to be accurate are set out as a general outline only for guidance and do not constitute any part of an offer or contract. Intending purchasers should not rely on them as statements of representation of fact, but must satisfy themselves by inspection or otherwise as to their accuracy. No person in this firm's employment has the authority to make or give any representation or warranty in respect of the property.