



Thomas Jacomb Place, Walthamstow, London,

Offers In Excess Of £315,000

FOR SALE

🚗 1 🚿 1 🛏 1

Leasehold

- Modern ground floor purpose built flat
- 1 Double bedroom
- Open plan lounge/kitchen
- Gated community
- Double glazing & Gas central heating
- Walthamstow Central Tube station 0.2 mile
- EPC rating: C (80) & Council tax band: B
- Communal garden
- Chain-free
- Internal: 490 sq ft (45 sq m)

Located within a secure gated community, this chain-free, modern ground-floor purpose-built flat offers an ideal blend of contemporary style and urban convenience. The property is neutrally decorated throughout, providing a bright, versatile canvas ready for immediate occupation.

The heart of the home is an expansive open-plan lounge and modern kitchen, designed to maximise both light and social space. The kitchen area is finished with sleek cabinetry and integrated appliances, flowing seamlessly into the living area, which serves as a comfortable retreat for relaxing or entertaining. French doors open directly onto a well-maintained, south-facing communal garden. Situated in a secluded corner away from foot traffic, it offers a peaceful escape with the distinct feel of a private garden.

The accommodation continues with a spacious double bedroom featuring built-in storage, ensuring a clutter-free environment. This is complemented by a modern bathroom featuring contemporary fixtures and a clean, crisp finish. Practicality is further enhanced by additional storage in the hallway, keeping everyday essentials tucked away.

With the best of Walthamstow on its doorstep, this home is ideally situated for both easy commuting and local culture. Walthamstow Central station is just a short stroll away, offering quick access to Victoria Line and Overground services.

The local area is a hub of activity, with the 17&Central shopping centre and the High Street, home to a famous market and cafes, shops, restaurants and bakeries, right on your doorstep. For those seeking green space, the Walthamstow Wetlands, marshes and Lloyd Park are all within easy reach, while the charming Walthamstow Village offers a relaxed, historic atmosphere.

For evening entertainment, Soho Theatre Walthamstow and the award-winning Ye Olde Rose and Crown theatre pub are both within easy walking distance, placing the very best of E17's cultural scene at your fingertips.

Shall we take a look?

Thomas Jacomb Place, Walthamstow, London, E17

DIMENSIONS

Open plan lounge/kitchen
20'8 x 13'1 (6.30m x 3.99m)

Bedroom
13'1 x 9'10 (3.99m x 3.00m)

Bathroom
7'1 x 5'7 (2.16m x 1.70m)

Communal Garden

Additional Information:

Lease Term: 125 years (less 3 days) from 1 January 2006

Lease Remaining: 105 years remaining

Ground Rent: £200 per annum

Service charge: £1,693.32 per annum

Local Authority: London Borough Of Waltham Forest

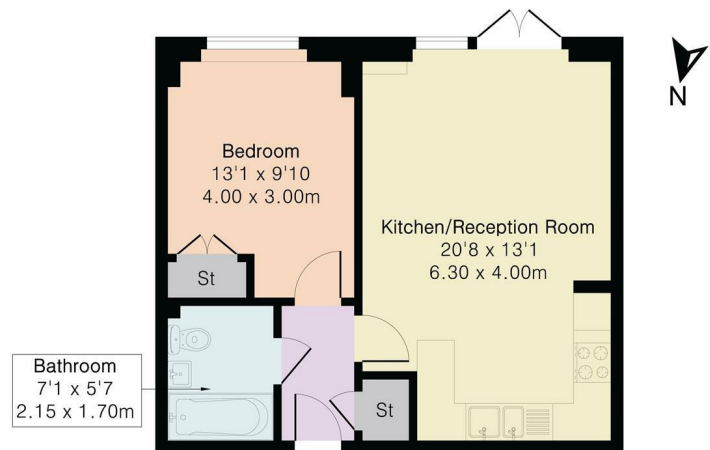
Council Tax Band: B

Disclaimer:

We endeavour to ensure that our particulars are as accurate and reliable as possible; however, they do not constitute or form part of any offer or contract and should not be relied upon as statements or representations of fact. All measurements are approximate and provided as a guide only. Any systems, services, or appliances referred to have not been tested by us, and we are therefore unable to verify or guarantee their working condition. All photographs and floorplans are provided for guidance only. Tenants are advised to verify details relating to planning permissions, building regulations, and any works carried out at the property with their solicitor or conveyancer, as well as tenure and lease information where applicable.

FLOORPLAN

Approximate Gross Internal Area 490 sq ft - 46 sq m



Ground Floor

EPC RATING

Energy Efficiency Rating		
	Current	Potential
Very energy efficient - lower running costs		
(92 plus) A		
(81-91) B		
(69-80) C	80	80
(55-68) D		
(39-54) E		
(21-38) F		
(1-20) G		
Not energy efficient - higher running costs		
England & Wales	EU Directive 2002/91/EC	

LOCATION



hello@estateseast.co.uk

020 8520 9300

estateseast.co.uk

