



**JOWEBSTER**

*Apartment C34*  
Albion Riverside, SW11



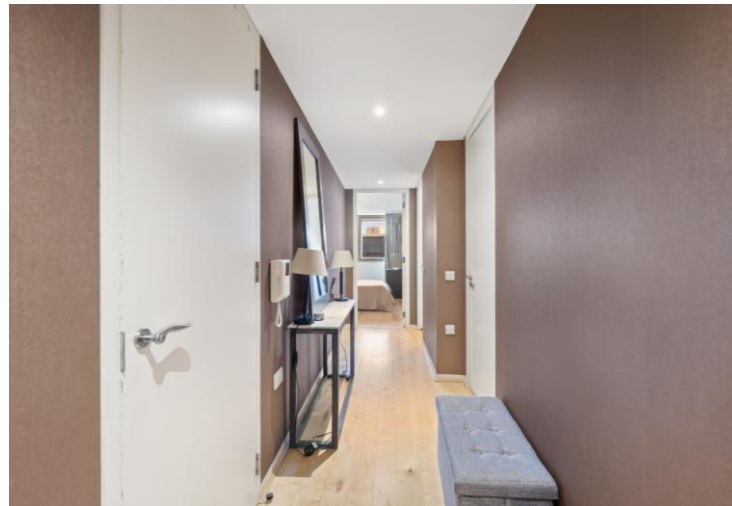
### Property Attributes

- Entrance Hall
- Open Plan Reception/Kitchen/Dining
- Bedroom with Walk in Wardrobe
- Bathroom
- 24 Hour Security
- Gymnasium
- Swimming Pool
- Secure Underground Parking (Space for one car)

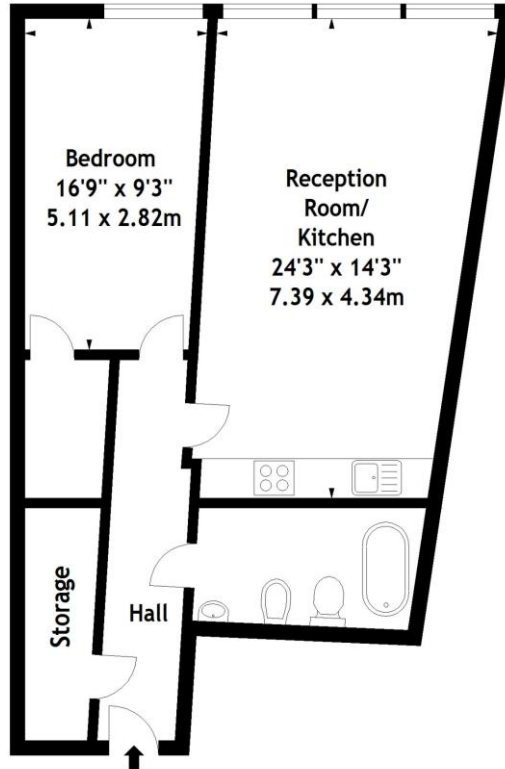


### Terms

- Price: £595,000
- Borough: London Borough of Wandsworth
- Tenure: Leasehold approx. 960 years remaining
- Service Charge: Approx. £6,396 per annum
- Ground Rent: Approx. £225 per annum
- Council Tax Band: Band F



Albion Riverside,  
Hester Road, SW11  
Approx. Gross Internal Area  
711 Sq Ft - 66.05 Sq M



### Third Floor

Measured in accordance with RICS guidelines. Every attempt is made to ensure accuracy, however all measurements are approximate. This floor plan is for illustrative purposes only and is not to scale.

© Datography Ltd 2014  
Photographs \* Floorplans \* Virtual Tours  
Tel: 0845 643 4401 [www.datography.com](http://www.datography.com)

+44 (0) 20 7349 7055  
[sales@jowebster.com](mailto:sales@jowebster.com)

#### Misdescription Act

We wish to advise prospective purchasers that these sales particulars are believed to be correct, but their accuracy is in no way guaranteed, nor do they form any part of contract. We have not carried out a detailed survey nor tested the services, appliances or specific fittings. Measurements are approximate.