



**Haddington Court William Street, Herne Bay, CT6 5EJ**  
**Prices from £350,000**



## Haddington Court William Street, Herne Bay, CT6 5EJ Prices from £350,000

Experience Luxury Coastal Living at Haddington Court - Meet with us at the Launch on Saturday 20th June 2026

Be among the first to step inside the stunning new Show Apartment at Haddington Court, an exclusive collection of twenty luxury two-bedroom apartments where contemporary London-inspired design meets relaxed coastal living.

Join us on Saturday 20th June 2026 for the official launch event and discover the exceptional quality, style, and attention to detail that make Haddington Court one of the area's most anticipated developments.

Explore beautifully designed interiors, premium specifications, spacious open-plan living, and impressive outdoor spaces created to embrace the very best of seaside living. Whether you're searching for your dream coastal home, a stylish lock-up-and-leave retreat, or a smart investment opportunity, Haddington Court offers a lifestyle unlike any other.

Priced From £350,000

Exclusive Launch Day Incentive

## Description

### Exclusive Launch Day Incentive

To celebrate the launch of our Show Apartment on Saturday 20th June 2026, the developer is offering an exclusive £15,000 purchaser incentive on reservations made during the launch event.

This contribution can be used towards Stamp Duty Land Tax, legal fees, or other qualifying purchase costs, helping to make your move to Haddington Court even more rewarding.

This limited-time incentive is available on selected apartments and is subject to the developer's terms and conditions. Speak to the sales team on the day for full details.

### Agent Notes

"The Parties acknowledge that any computer-generated images (CGIs), visual renderings, or illustrations provided are for general guidance only. Such CGIs are intended to offer an indicative representation of the external and internal appearance of the property/development and may include stylistic, artistic, or illustrative elements. They do not constitute exact or final depictions. Actual materials, finishes, layouts, colours, dimensions, and design details may vary from those shown in the CGIs. No warranty, representation, or guarantee is given that the completed works will precisely match any CGI provided."

### Tenure Leasehold

### Specification Highlights

#### Where Attention to Detail Defines the Difference

At Haddington Court, every element has been thoughtfully considered to deliver exceptional quality and lasting style. These luxury two-bedroom apartments combine refined craftsmanship, contemporary design, and practical comfort — all ready for you to move in and enjoy from day one.

#### Interiors

**Elegant Living Spaces:** Light-filled rooms finished in white matt create a fresh, timeless canvas.

**Flooring:** Amtico Oak flooring flows seamlessly through living areas, complemented by luxury Cormar carpets to bedrooms for warmth and comfort.

**Doors & Joinery:** Oak finished doors, white satinwood skirting, and architraves add a refined finish throughout.

#### Kitchens

Designed and fitted by Gardiner of England with fully integrated appliances for a sleek, modern aesthetic with Miele appliances.

High-quality glass splashbacks and durable worktops combine practicality with contemporary design flair.

#### Bathrooms & En-suites

Beautifully appointed with sanitaryware including fluted vanities, Marble tiling, and chrome fittings.

Backlit mirrors and underfloor heating add a touch of hotel-style luxury.

#### Lighting & Electrical

Recessed LED lighting and screwless polished chrome switches enhance the clean, modern interiors.

All apartments include video entry systems for peace of mind and convenience.

#### Comfort & Energy Efficiency

Designer radiators and Heat Mat electric underfloor heating ensure year-round comfort.

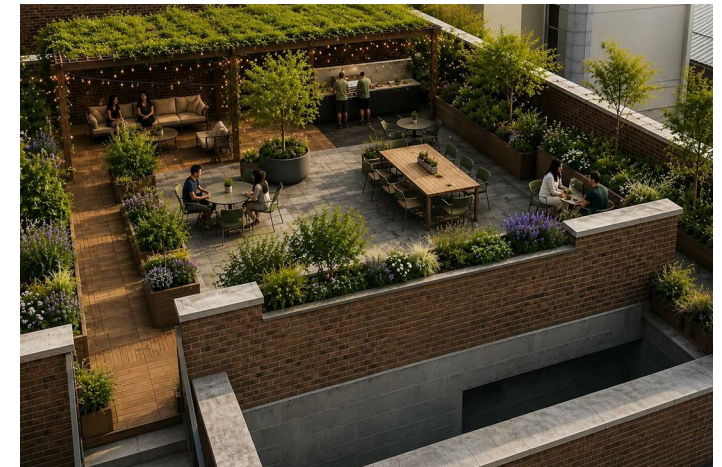
Efficient heating and hot water solution.

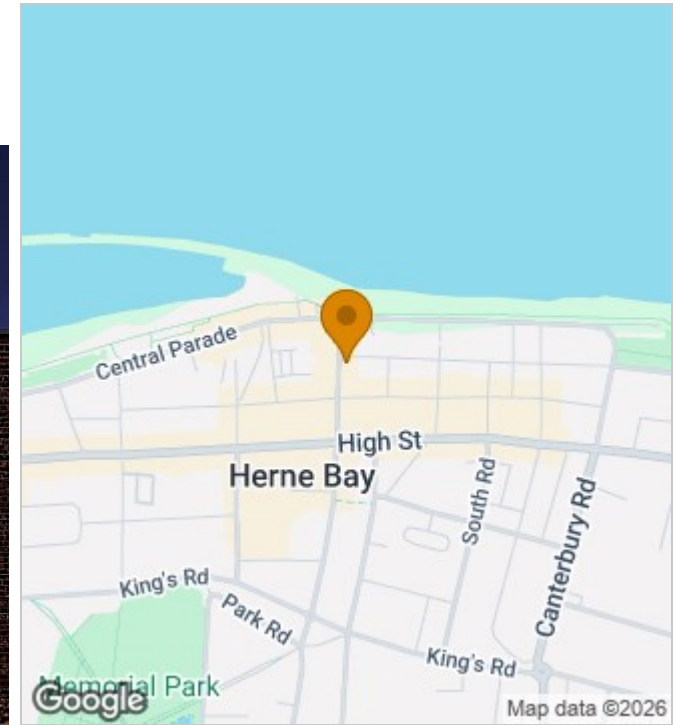
#### Outdoor Living

Private gardens to ground-floor apartments and decked terraces or balconies to upper floors provide perfect spaces for relaxation and entertaining.

Each detail at Haddington Court reflects the developers' commitment to craftsmanship, style, and comfort — delivering homes that feel both luxurious and effortlessly liveable.

\* Full specification list can be provided - This may be subject to change.





### Energy Efficiency Rating

	Current	Potential
<i>Very energy efficient - lower running costs</i>		
(92 plus) <b>A</b>		
(81-91) <b>B</b>		
(69-80) <b>C</b>		
(55-68) <b>D</b>		
(39-54) <b>E</b>		
(21-38) <b>F</b>		
(1-20) <b>G</b>		
<i>Not energy efficient - higher running costs</i>		
<b>England &amp; Wales</b>	EU Directive 2002/91/EC	

190 High Street, Herne Bay, Kent, CT6 5AP  
 Tel: 01227 949291 | Email: [michelle@zesthomes.uk](mailto:michelle@zesthomes.uk)  
[www.zesthomes.uk](http://www.zesthomes.uk)

1. Money Laundering Regulations: Please note all sellers and intended purchasers will receive an 'On Boarding' link to verify their identity. This is a legal requirement prior to a sale or purchase proceeding.
2. All measurements stated on our details and floorplans are approximate and as such can not be relied upon and do not form part of any contracts.
3. Zest Homes have not tested any services, equipment or appliances and it is therefore the responsibility of any buyer/tenant to do so.
4. Photographs and marketing material are produced as a guide only and legal advice should be sought to verify fixtures and fittings, planning, alterations and lease details.
5. Zest Homes hold the copyright to all advertising material used to market this property.