



**Slopers Lea, Devizes SN10 2GU**

## Welcome to

### Slopers Lea, Devizes

An elegant three-bedroom end-of-terrace home within the sought-after Lay Wood development. Featuring a bright dual-aspect lounge, contemporary kitchen/diner, stylish bathroom, enclosed garden and tandem parking, offering refined living close to countryside walks.

#### Entrance Hall

Entrance to this lovely three bed end of terrace family home situated in a popular residential area within the Wiltshire market town of Devizes is via the front door leading into the entrance hall which comprises : stairs leading to the first floor, door leading to the lounge and a radiator.

#### Cloakroom

Downstairs cloakroom comprising a low level w/c, wash hand basin and a radiator.

#### Lounge

Generous dual-aspect lounge with windows to both the front and side elevations, allowing an abundance of natural light, with a door leading through to the kitchen/diner and ample space for a full range of lounge furniture.

#### Kitchen / Diner

Kitchen/diner fitted with a range of wall and base units with work surfaces over, integrated oven, integrated gas hob with extractor above, plumbing for a washing machine and space for a fridge/freezer. Window to the rear aspect, access to a large understairs storage cupboard, space for dining table and chairs and a radiator.

#### Landing

Stairs from the entrance hall with doors leading to all bedrooms and family bathroom.

#### Bedroom One

Generous bedroom with a window to the front aspect, built in storage, ample space for bedroom furniture and a radiator.

#### Bedroom Two

Another good sized bedroom with a window to the rear aspect and a radiator.

#### Bedroom Three

Situated to the rear of the property with a window overlooking the garden and a radiator.

#### Bathroom

Family bathroom comprising a low level w/c, wash hand basin and bath with shower over. Obscure window to the side aspect and a radiator.

#### Rear Garden

Rear garden with a patio area to the fore with the remainder laid to lawn. Side access leading to the driveway, raised beds with a selection of shrubs and wooden garden shed.

#### Parking

Tandem driveway to the side of the property for two vehicles.

#### Agent Note

This property is currently offered under a shared ownership scheme but will become fully freehold upon completion. This means the buyer will own the property outright, with no rent or leasehold charges, providing full ownership from the moment the purchase is finalised.





***view this property online*** [allenandharris.co.uk/Property/DVZ107289](http://allenandharris.co.uk/Property/DVZ107289)



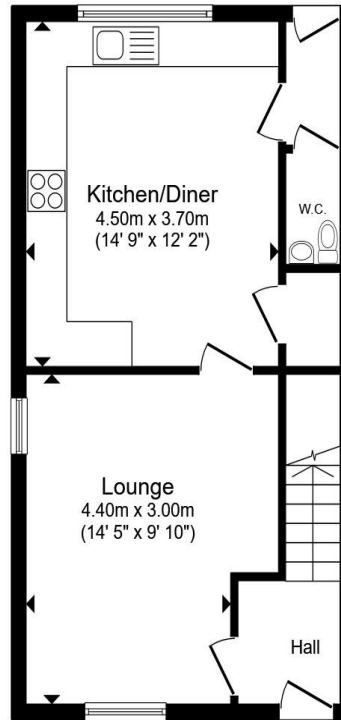
## Welcome to

### Slopers Lea, Devizes

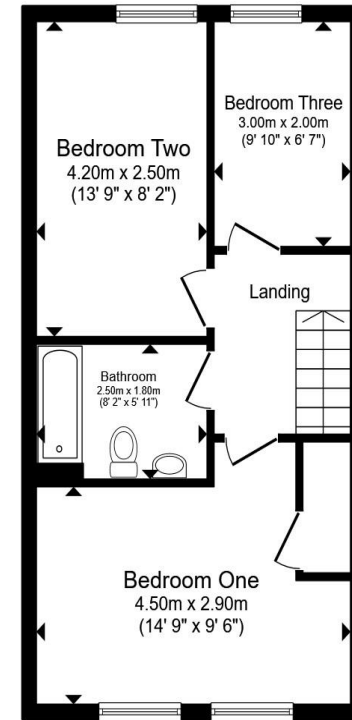
- Sought After Location
- Three Bed Family Home
- Enclosed Rear Garden
- Parking for Two Vehicles
- Viewing Highly Recommended

Tenure: Freehold EPC Rating: B  
Council Tax Band: C

# £290,000



Ground Floor



First Floor

Total floor area 83.7 m<sup>2</sup> (901 sq.ft.) approx

This floor plan is for illustrative purposes only. It is not drawn to scale. Any measurements, floor areas (including any total floor area), openings and orientation are approximate. No details are guaranteed, they cannot be relied upon for any purpose and they do not form part of any agreement. No liability is taken for any error, omission or misstatement. A party must rely upon its own inspection(s). Powered by [www.propertybox.io](http://www.propertybox.io)

 allen & harris

[view this property online](http://allenandharris.co.uk/Property/DVZ107289) [allenandharris.co.uk/Property/DVZ107289](http://allenandharris.co.uk/Property/DVZ107289)



Property Ref:  
DVZ107289 - 0002

1. MONEY LAUNDERING REGULATIONS Intending purchasers will be asked to produce identification documentation at a later stage and we would ask for your co-operation in order that there is no delay in agreeing the sale. 2. These particulars do not constitute part or all of an offer or contract. 3. The measurements indicated are supplied for guidance only and as such must be considered incorrect. Potential buyers are advised to recheck measurements before committing to any expense. 4. We have not tested any apparatus, equipment, fixtures or services and it is in the buyers interest to check the working condition of any appliances. 5. Where an EPC, or a Home Report (Scotland only) is held for this property, it is available for inspection at the branch by appointment. If you require a printed version of a Home Report, you will need to pay a reasonable production charge reflecting printing and other costs. 6. We are not able to offer an opinion either written or verbal on the content of these reports and this must be obtained from your legal representative. 7. Whilst we take care in preparing these reports, a buyer should ensure that his/her legal representative confirms as soon as possible all matters relating to title including the extent and boundaries of the property and other important matters before exchange of contracts.

Allen & Harris is a trading name of Sequence (UK) Limited which is registered in England and Wales under company number 4268443, Registered Office is Cumbria House, 16-20 Hockliffe Street, Leighton Buzzard, Bedfordshire, LU7 1GN. VAT Registration Number is 500 2481 05.

 allen & harris



**01380 729900**



[devizes@allenandharris.co.uk](mailto:devizes@allenandharris.co.uk)



4 Northgate Street, DEVIZES, Wiltshire, SN10 1JL



[allenandharris.co.uk](http://allenandharris.co.uk)