



**Connells**

Kelso Close  
Bletchley MILTON KEYNES



# Kelso Close Bletchley MILTON KEYNES MK3 5ET

for sale  
**£350,000**



## Property Description

Connells are delighted to offer this three bedroom detached family home situated in the popular Racecourse development of Bletchley. Accommodation comprises of an entrance hall, kitchen and living room to the ground floor. To the first floor there is three good sized bedrooms and a family bathroom. To the exterior of the property there is driveway parking for multiple cars, a single garage and a good sized rear garden.

## Entrance Hall

Wall mounted radiator. Access to living room, kitchen and to the first floor landing.

## Living Room

15' 6" x 13' 11" ( 4.72m x 4.24m )

A generously sized dual-aspect living room benefitting from UPVC double-glazed window to front aspect as well as a UPVC sliding door to the rear aspect offering access to the garden. Wall mounted radiator.

## Kitchen

14' 9" x 9' 4" ( 4.50m x 2.84m )

A range of wall and base level units. Integrated appliances to include dishwasher, fridge freezer and a double oven. Further space is offered for a washing machine. Stainless steel sink and drainer. UPVC double-glazed window to front and rear aspects. Wall mounted radiator.

## First Floor

## Landing

Rise from entrance hall. UPVC double-glazed window to rear aspect.

## Bedroom One

12' 4" x 10' 2" Maximum ( 3.76m x 3.10m Maximum )

A double bedroom benefitting from UPVC double-glazed window to front aspect and wall mounted radiator.

## Bedroom Two

11' 2" x 8' 2" ( 3.40m x 2.49m )

A double bedroom benefitting from UPVC double-glazed window to front aspect and a wall mounted radiator.

## Bedroom Three

7' 6" x 6' 4" ( 2.29m x 1.93m )

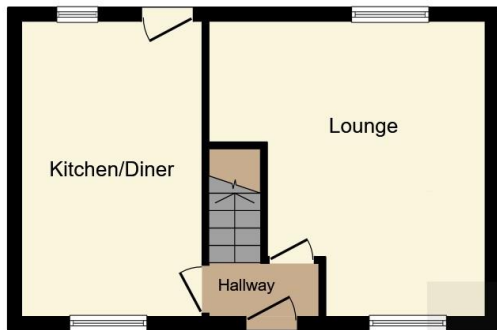
UPVC double-glazed window to rear aspect and wall mounted radiator.

## Bathroom

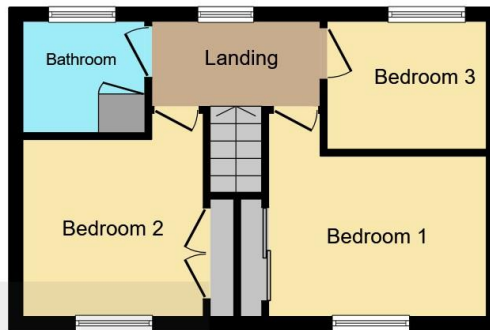
A three-piece suite to include WC, wash hand basin and a bath. Built-in storage cupboard. UPVC double-glazed opaque window to rear aspect. Wall mounted radiator.



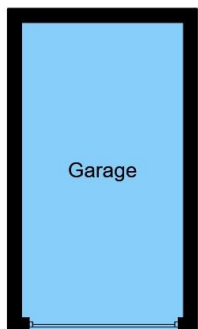




**Ground Floor**



**First Floor**



**Garage**

This floor plan is for illustrative purposes only. It is not drawn to scale. Any measurements, floor areas (including any total floor area), openings and orientation are approximate. No details are guaranteed, they cannot be relied upon for any purpose and they do not form part of any agreement. No liability is taken for any error, omission or misstatement. A party must rely upon its own inspection(s). Powered by [www.focalagent.com](http://www.focalagent.com)

To view this property please contact Connells on

**T 01908 375 241**  
**E [bletchley@connells.co.uk](mailto:bletchley@connells.co.uk)**

188 Queensway Bletchley  
 MILTON KEYNES MK2 2SW

EPC Rating: C Council Tax  
 Band: C

**view this property online [connells.co.uk/Property/BLE311464](http://connells.co.uk/Property/BLE311464)**



Tenure: Freehold



1. MONEY LAUNDERING REGULATIONS Intending purchasers will be asked to produce identification documentation at a later stage and we would ask for your co-operation in order that there will be no delay in agreeing the sale. 2. These particulars do not constitute part or all of an offer or contract. 3. The measurements indicated are supplied for guidance only and as such must be considered incorrect. Potential buyers are advised to recheck measurements before committing to any expense. 4. We have not tested any apparatus, equipment, fixtures, fittings or services and it is in the buyers interest to check the working condition of any appliances.

Connells Residential is registered in England and Wales under company number 1489613, Registered Office is Cumbria House, 16-20 Hockliffe Street, Leighton Buzzard, Bedfordshire, LU7 1GN. VAT Registration Number is 500 2481 05.

**See all our properties at [www.connells.co.uk](http://www.connells.co.uk) | [www.rightmove.co.uk](http://www.rightmove.co.uk) | [www.zoopla.co.uk](http://www.zoopla.co.uk)**

Property Ref: BLE311464 - 0010