



Delves Bank Road  
Swanwick Alfreton



## Property Description

This is an ideal opportunity to purchase a well maintained and presented detached bungalow situated within the popular village location of Swanwick. This well proportioned accommodation is offered for sale with no upward chain and has a prime cul-de-sac position. The accommodation has reception hall and cloakroom with two piece suite. The lounge has patio doors to the side elevation, providing natural lighting into this well proportioned room. The separate dining room has window to the rear. The spacious breakfast kitchen has integrated oven and hob and provides access to the separate utility room. The bungalow has three bedrooms, the master bedroom with wet room. Bathroom with three piece suite, the bath having shower over. The wrap around gardens to the property, to the front are open plan being laid to lawn and providing access to the detached single garage. The rear garden is laid to lawn with a paved patio area. The accommodation offers versatility should this be required.

## Reception Hall

This light and spacious reception hall has radiator, ceiling coving and cupboard providing storage space.

## Cloakroom

Two piece suite comprising of low flush W/C and wash hand basin. Tiled splashbacks and window to the front.

## Kitchen

Fitted with a range of wall and base units with complementary work surfaces over incorporating a single drainer stainless steel sink unit with mixer tap. Integrated four ring gas hob with extractor hood over and electric oven. Standing space for the fridge freezer, radiator and complementary tiled splashbacks and floor. Access to the;

## Utility Room

Providing plumbing for the automatic washing machine, entrance door to the side and radiator.

## Lounge

The focal point of this room is a feature stone fire surround with complementary media plinth and incorporating an electric fire. Double glazed patio doors to the rear elevation provide natural light into the room and further double glazed window to the front. Radiator, ceiling coving and access to the;

## Dining Room

This dual aspect room has double glazed windows to the rear and side elevation, radiator, ceiling coving and recessed lighting.

## Bedroom One

Fitted with a suite of wardrobes providing shelving and hanging space. Radiator, laminate floor and double glazed window to the front.

### Ensuite Wet Room

Having shower, low flush wc and wash hand basin.. Tile splash backs, radiator and window to the rear.

### Bedroom Two

Double glazed window to the front, radiator and ceiling coving.

### Bedroom Three

Double glazed window to the rear, radiator and ceiling coving.

### Bathroom

This beautiful bathroom has three piece suite comprising of panel shower bath with glass shower screen and shower over. Wash hand basin with vanity unit and low flush W/C. High gloss complementary tiling to the walls and floor. Heated towel rail and double glazed window to the side.

### Outside

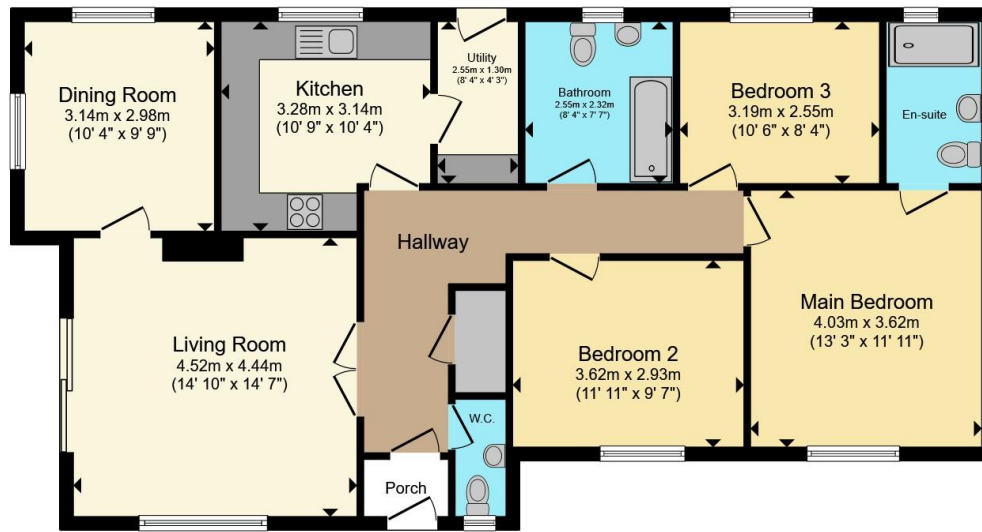
Externally the property has wrap around gardens, being open plan to the front elevation being laid to lawn. The rear garden can be accessed from the lounge by the patio doors and provides an area of lawn. The rear itself has a retaining wall and overlooks the neighbours garden. The front of the

property has the detached garage which is larger than average in size and has electric up and over door.

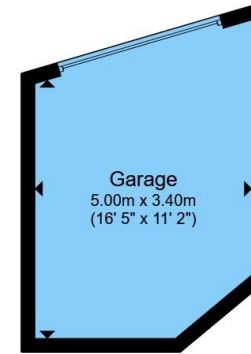








**Ground Floor**



**Garage**

Total floor area 117.9 m<sup>2</sup> (1,269 sq.ft.) approx

This floor plan is for illustrative purposes only. It is not drawn to scale. Any measurements, floor areas (including any total floor area), openings and orientation are approximate. No details are guaranteed, they cannot be relied upon for any purpose and they do not form part of any agreement. No liability is taken for any error, omission or misstatement. A party must rely upon its own inspection(s). Powered by [www.propertybox.io](http://www.propertybox.io)



To view this property please contact Hall & Benson on

**T 01773 521771**  
**E [alfreton@hallandbenson.co.uk](mailto:alfreton@hallandbenson.co.uk)**

22A High Street  
 ALFRETON DE55 7BN

EPC Rating: C Council Tax  
 Band: D

**view this property online [hallandbenson.co.uk/Property/ALF104555](http://hallandbenson.co.uk/Property/ALF104555)**

Tenure: Freehold



1. MONEY LAUNDERING REGULATIONS Intending purchasers will be asked to produce identification documentation at a later stage and we would ask for your co-operation in order that there will be no delay in agreeing the sale. 2. These particulars do not constitute part or all of an offer or contract. 3. The measurements indicated are supplied for guidance only and as such must be considered incorrect. Potential buyers are advised to recheck measurements before committing to any expense. 4. We have not tested any apparatus, equipment, fixtures, fittings or services and it is in the buyers interest to check the working condition of any appliances.

Hall & Benson is a trading name of Connells Residential which is registered in England and Wales under company number 1489613, Registered Office is Cumbria House, 16-20 Hockliffe Street, Leighton Buzzard, Bedfordshire, LU7 1GN. VAT Registration Number is 500 2481 05.

**See all our properties at [www.hallandbenson.co.uk](http://www.hallandbenson.co.uk) | [www.rightmove.co.uk](http://www.rightmove.co.uk) | [www.zoopla.co.uk](http://www.zoopla.co.uk)**

Property Ref: ALF104555 - 0003