



St. Davids Square, E14

£325,000

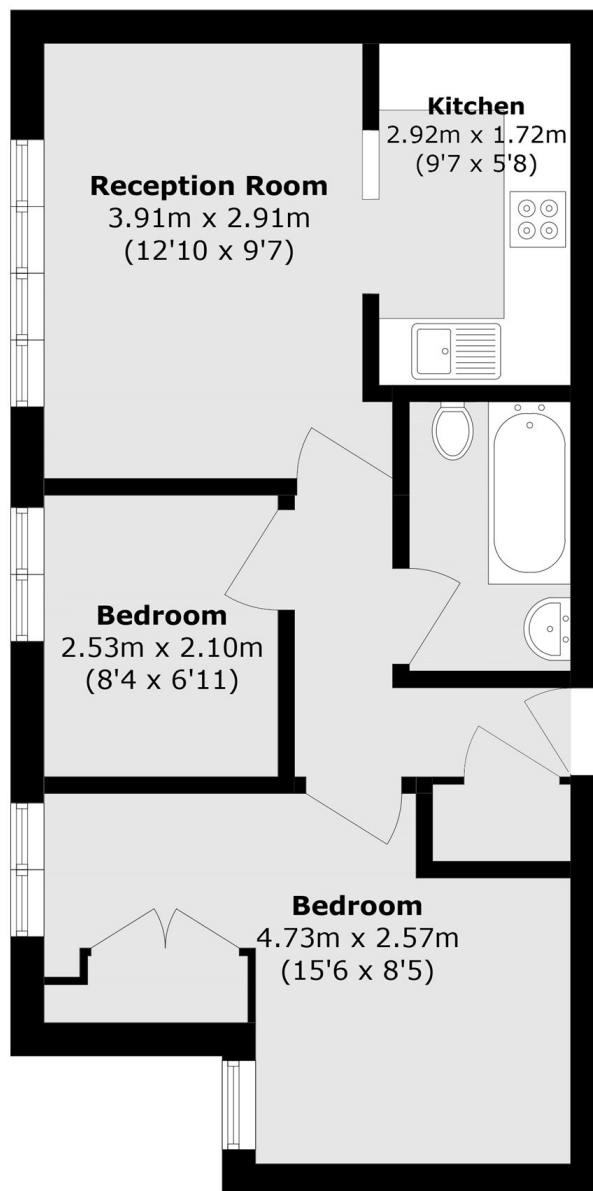
Situated within a highly sought after riverside development, we are pleased to present this 2 bedroom apartment. This property benefits from an abundance of natural light, a secure entry phone system, views of Canary Wharf and secure allocated parking. Residents will benefit from access to a private concierge and leisure facilities such as a gym and a swimming pool.

St. Davids Square is conveniently located just off Westferry Road and is 6 minute walk (0.3 miles) from Island Gardens DLR station, allowing easy access into the city and Canary Wharf. Greenwich Foot Tunnel is also a 7 minute walk away (0.4 miles).

Features

- Allocated Parking
- Natural Light
- Secure Entry Phone System
- Riverside Development
- Private Concierge
- Leisure Facilities

St. Davids Square, London, E14



Total area (approx.): 45.2 sq. m (486.5 sq. ft)