

218 High Road

North Weald, Essex

Guide Price £725,000

Welcome to High Road, North Weald and this gorgeous four bedroom detached home. Chain free with a newly fitted kitchen, it's a complete blank canvas to add your own colour and flair. With a garage, driveway and full of space, there's much to love here.

Council Tax band: E

Tenure: Freehold

- Detached four bedroom home
- Chain free
- New kitchen
- Driveway & garage
- Ensuite shower room
- Utility room
- Much loved village location



Hallway

Living Room

19' 6" x 12' 5" (5.94m x 3.78m)

Kitchen

21' 5" x 9' 3" (6.54m x 2.82m)

Dining Room

15' 0" x 10' 10" (4.56m x 3.30m)

Utility Room

15' 3" x 8' 4" (4.65m x 2.55m)

WC

Primary Bedroom

15' 0" x 13' 7" (4.58m x 4.13m)

Ensuite Shower Room

8' 10" x 5' 7" (2.70m x 1.70m)

Bedroom

11' 10" x 11' 7" (3.60m x 3.52m)

Bedroom

8' 9" x 7' 11" (2.67m x 2.42m)

Bedroom

9' 4" x 8' 9" (2.85m x 2.66m)

Bathroom

8' 9" x 5' 6" (2.67m x 1.67m)

Internal Garage

16' 5" x 8' 4" (5.00m x 2.55m)

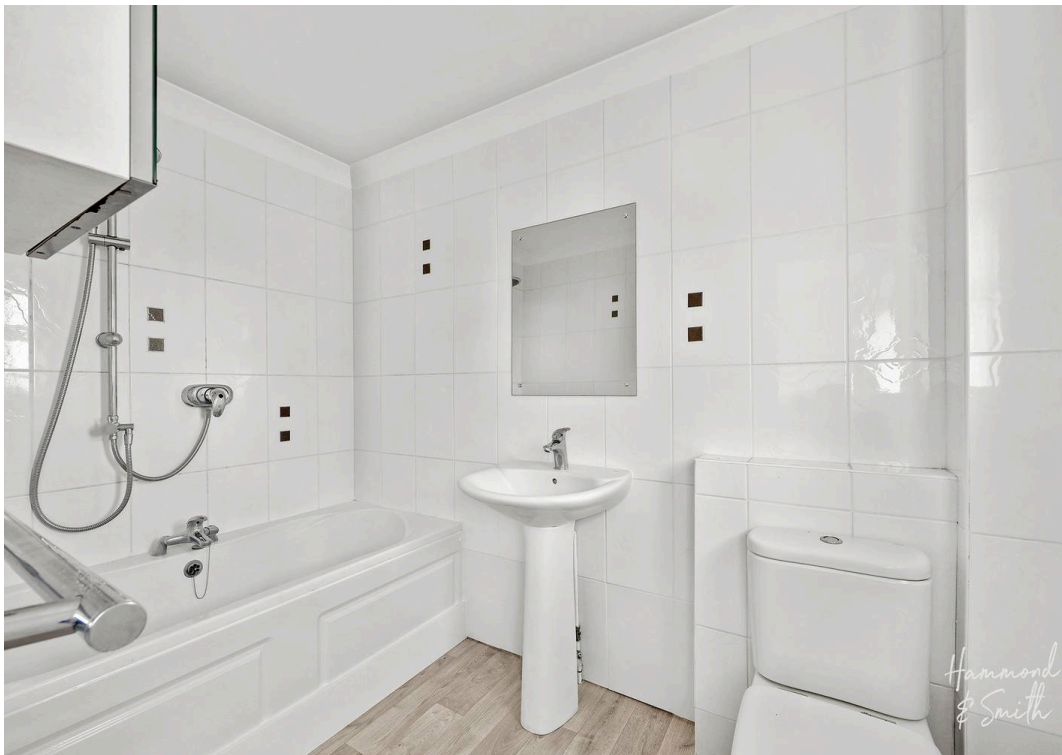




Hammond
& Smith



Hammond
& Smith



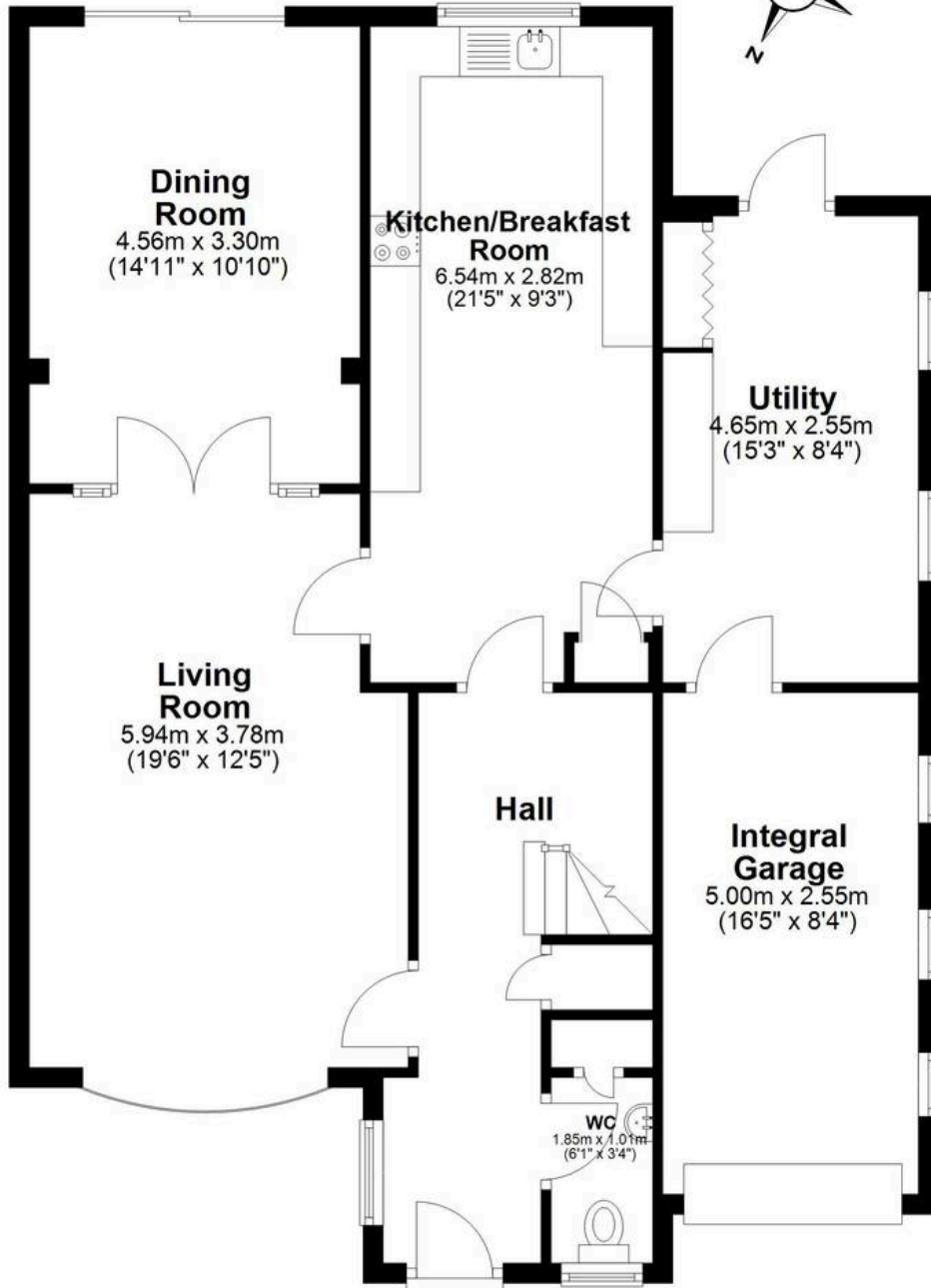
Hammond
& Smith



Hammond
& Smith

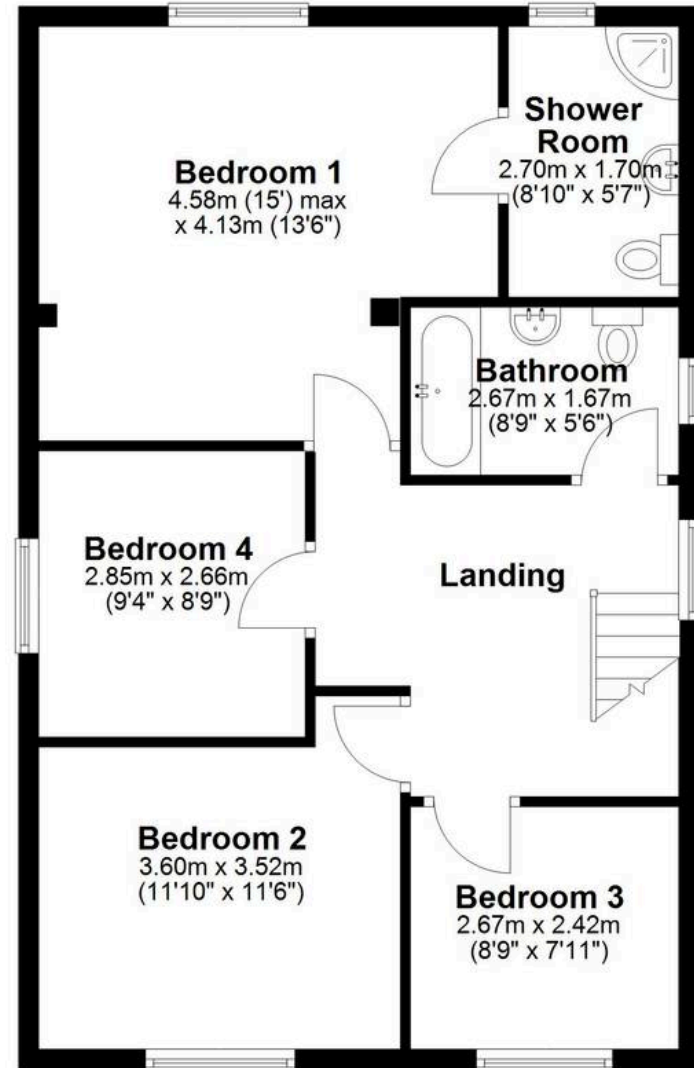
Ground Floor

Approx. 95.9 sq. metres (1032.1 sq. feet)



First Floor

Approx. 64.9 sq. metres (699.0 sq. feet)



Total area: approx. 160.8 sq. metres (1731.1 sq. feet)