



Chantry Street

Islington, N1

Offers in excess of £1,500,000

A stylish three-bedroom, three-storey Georgian terraced house, ideally located on a highly sought-after residential street within the Duncan Terrace/Colebrooke Row Conservation area.

CHESTERTONS



Chantry Street

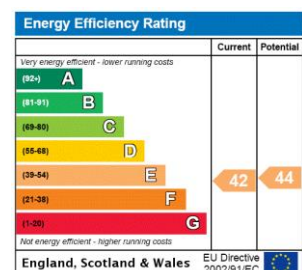
Islington, N1

- Superb Angel Location
- Three Bedrooms
- 33ft South Facing Garden
- Duncan Terrace/Colebrooke Row Conservation Area



Lovingly maintained, the property offers a bright and elegant double reception room and welcoming hallway on the ground floor. The lower ground floor features a well-proportioned kitchen, with access to a separate utility area, alongside a sleek, contemporary wet room. This level also includes a generously sized bedroom. Upstairs, the first floor comprises a principal bedroom with ample built-in storage, as well as a further well-proportioned double bedroom. A generous bathroom, complete with a classic roll-top bath, is located on the half landing and serves both bedrooms. The property further benefits from a private 33ft south facing garden, providing excellent outdoor space. Chantry Street is ideally positioned for convenient access to Angel Underground station (Northern Line) and is within close proximity to the vibrant amenities of Islington Green and Upper Street.

Tenure: Freehold
Local Authority: Islington
Council Tax Band: G



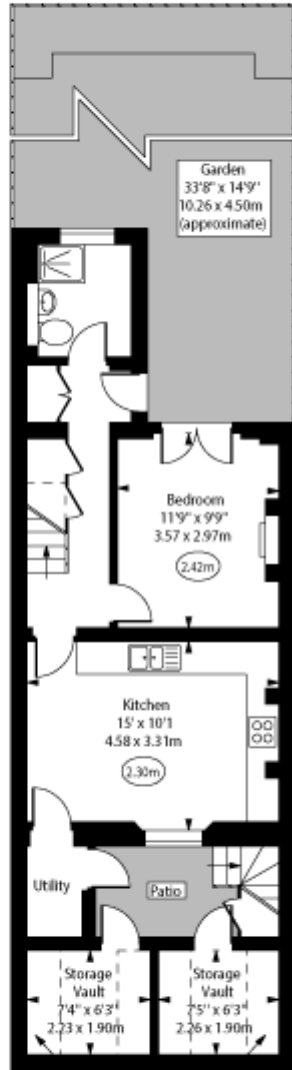
Chestertons Islington Sales

327-329 Upper Street
 Islington
 London
 N1 2XQ
 islington@chestertons.co.uk
 020 7359 9777
 chestertons.co.uk

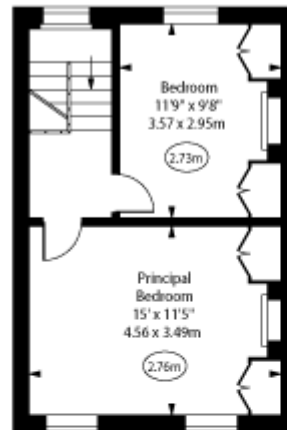
Chantry Street,
Islington, N1



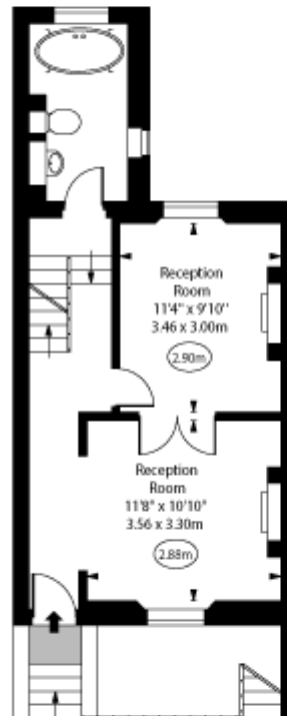
○ - Ceiling Height



Restricted Height Area
Lower Ground Floor



First Floor



Ground Floor

Approx Gross Internal Area 1218 Sq Ft - 113.15 Sq M
(Excluding Storage Vaults)

Storage Vaults Area 92 Sq Ft - 8.55 Sq M

Every attempt has been made to ensure the accuracy of the floor plan shown.
However, all measurements, fixtures, fittings, and data shown are approximate interpretations and for illustrative purposes only. Measured according to the RICS. Not To Scale.
www.goldlens.co.uk
Ref. No. 031183R

