


Natasha Howarth
ESTATE AGENTS



33 Tudor Way, Bridgwater, TA6 6UE

£269,950

A chance to acquire this well presented four bedroom semi-detached house which is situated on a generous size plot in a tucked away cul-de-sac position on the popular Quantock View development.

The property benefits from a kitchen/ diner overlooking the enclosed rear garden, a garage and off road parking on the drive. The centrally heated and double glazed accommodation briefly comprises entrance hallway, cloakroom, lounge and kitchen/diner to the ground floor with four bedrooms and a family bathroom to the first floor.

This home is well placed for access to Junction 24 of the M5 on the Southern outskirts of Bridgwater. There are some local shops within 500 metres with a much wider range of amenities to be found in the town centre of Bridgwater.

This property has been added to the market with the benefit of no onward chain.

For an appointment to view please contact the vendors sole agent.

ENTRANCE

Via double glazed door to:

ENTRANCE HALLWAY

Under stairs cupboard, radiator, wood effect flooring, doors to:

LOUNGE/ DINER

Two double glazed windows to front aspect. Feature gas fire. Radiator, wood effect flooring.

CLOAKROOM

Double glazed obscure window to side aspect. Fitted with a two piece suite comprising wash hand basin with tiled splashbacks and W.C. Radiator.

KITCHEN/ DINER

Two double glazed windows to rear aspect. Fitted with a matching range of wall, drawer and base units with roll top work surfaces over and sink and drainer unit inset. Tiled splashbacks. Integrated oven with gas hob and extractor over. Space for a fridge, space for a washing machine. Radiator, wood effect flooring. Double glazed door to the garden.

LANDING

Airing cupboard, loft hatch, doors to:

BEDROOM ONE

Double glazed window to front aspect, radiator.

BEDROOM TWO

Double glazed window to front aspect, radiator.

BEDROOM THREE

Double glazed window to rear aspect. Radiator.

BEDROOM FOUR

Double glazed window to rear aspect. Radiator.

BATHROOM

Double glazed obscure window to side aspect. Fitted with a white three piece suite comprising panelled bath with shower over. W.C and wash hand basin. Tiled walls.

FRONT GARDEN

Open plan and laid to lawn.

PARKING

On own side driveway for multiple vehicles.

GARAGE

Up and over door, power connected.

GARDEN

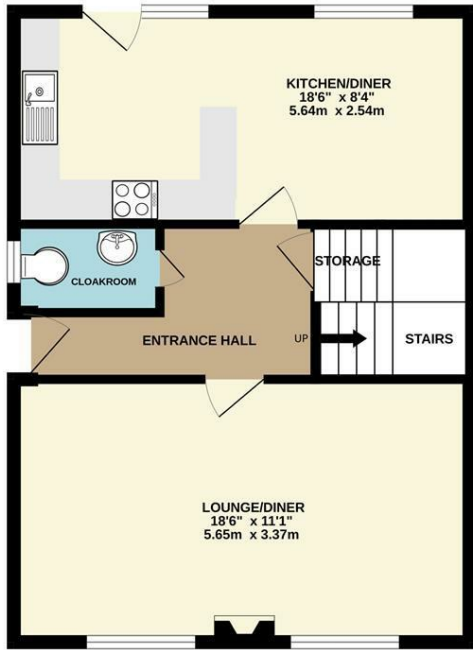
Fully enclosed via timber fencing. Patio adjacent to the property. Mainly laid to lawn. Iron pedestrian gate leading to the garage and to the front of the property.

SERVICES

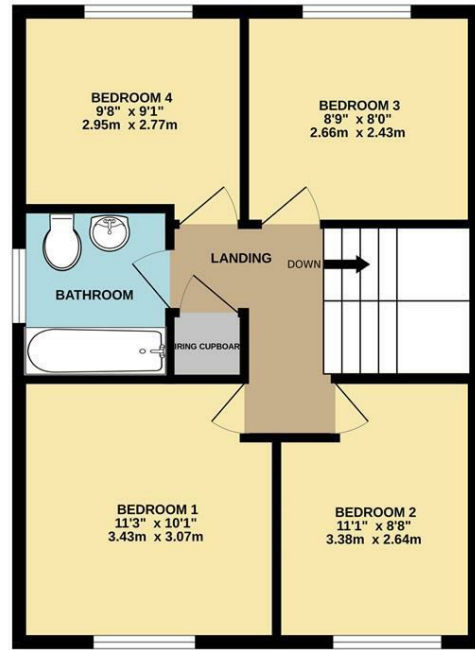
Mains gas, electricity, water and drainage.

Floor Plan

GROUND FLOOR

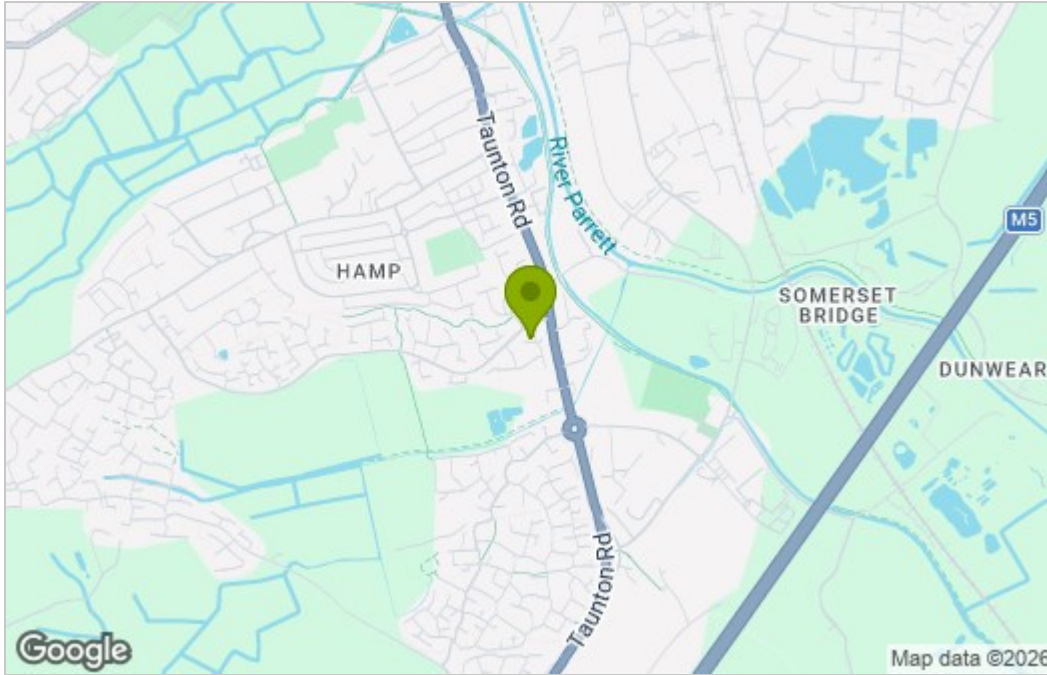


1ST FLOOR

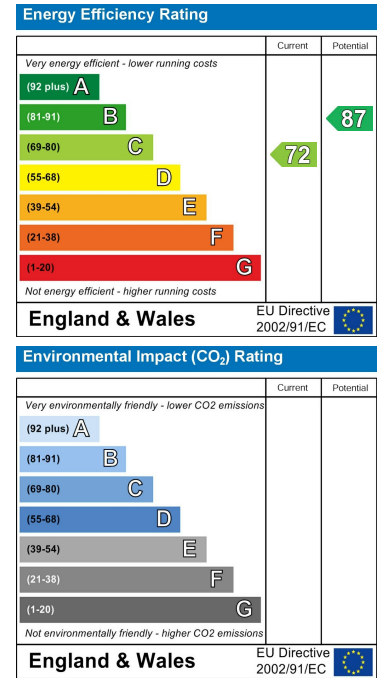


Whilst every attempt has been made to ensure the accuracy of the floorplan contained here, measurements of doors, windows, rooms and any other items are approximate and no responsibility is taken for any error, omission or mis-statement. This plan is for illustrative purposes only and should be used as such by any prospective purchaser. The services, systems and appliances shown have not been tested and no guarantee as to their operability or efficiency can be given.
Made with Metropix ©2026

Area Map



Energy Efficiency Graph



For clarification we wish to inform prospective purchasers that we have prepared these sales particulars as a general guide. The agent has not tested any appliances or services, heating systems etc so cannot verify if they are in working order, nor have we carried out a survey. Room sizes should not be relied upon for carpets and furnishings, if there are important matters which are likely to affect your decision to buy, please contact us or obtain verification from your Solicitor or Surveyor.
References to the Tenure of a Property are based on information supplied by the Seller.



01278 574562 07710 392220
sales@nhowarthestateagents.co.uk
www.natashowarthestateagents.co.uk

