



**Wavertree Road, SW2**

**£1,050,000**

**Dexters**



## Wavertree Road, SW2

At just under 1,700sqft is this four bedroom family home. Offered with no onward chain, this home has two large reception rooms, spacious kitchen diner as well as a utility room, garage and downstairs w/c.

Upstairs there are four double bedrooms and a family bathroom, this property is flooded with natural light and has the benefit of a large garden, off-street parking and an internal side access.

Wavertree Road sits by Streatham Hill and Tulse Hill, with its bustling shops, bars and restaurants on your doorsteps. The stations are nearby, providing easy travel to London Victoria, London Bridge and Blackfriars as well frequent buses to Brixton and surrounding areas. There are also some great local schools nearby.

### Features

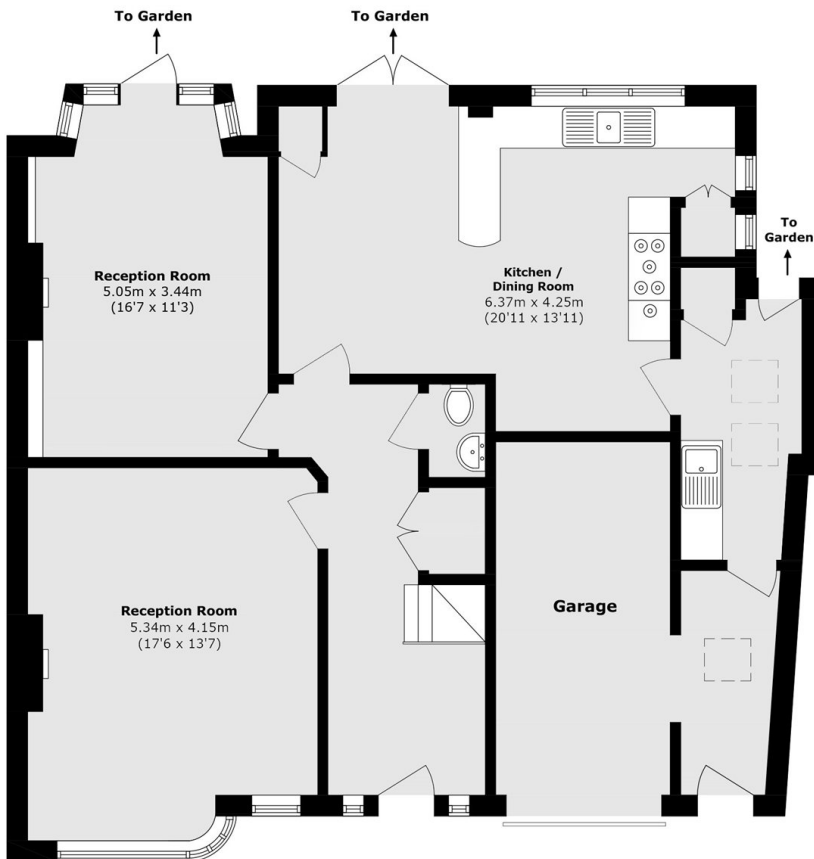
- Four Double Bedrooms
- Garage
- Off-Street Parking
- No onward chain
- Two Receptions
- Kitchen/Diner



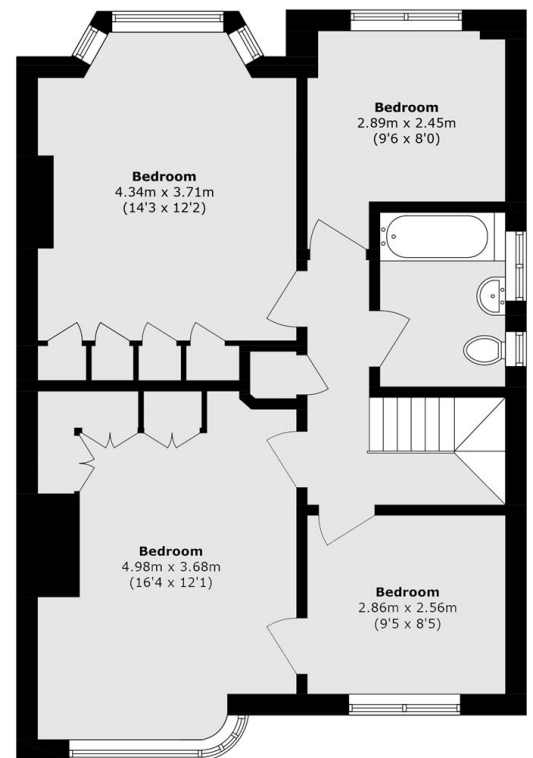




# Wavertree Road, London, SW2



**Ground Floor**



**First Floor**

Total area (approx.): 157.1 sq. m (1691.0 sq. ft)

Garage area (approx.): 12.6 sq. m (135.6 sq. ft)