



## Kepler Road, SW4

£2,400 Per calendar month

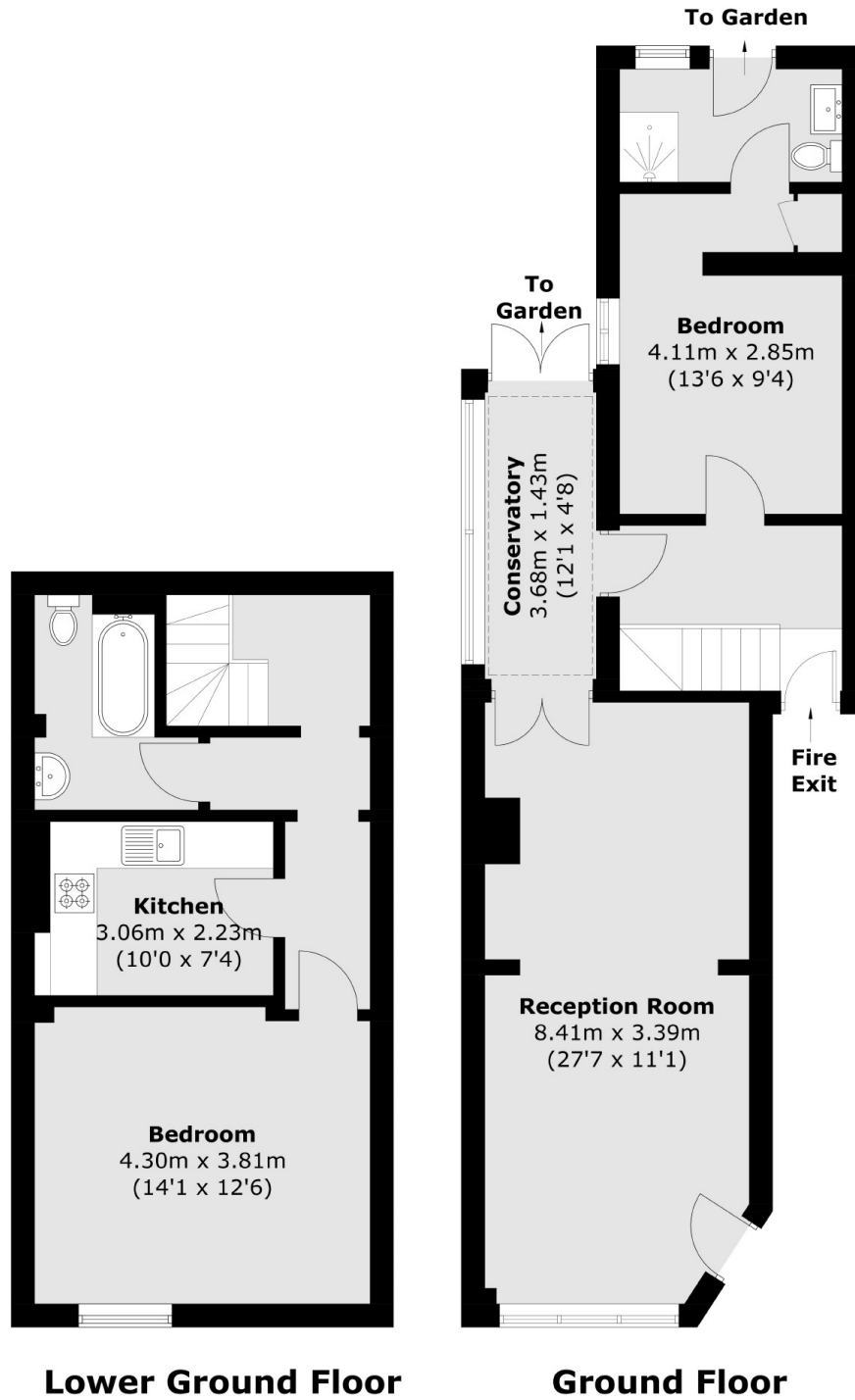
A spacious ground floor two bedroom, two bathroom flat in Clapham. Split over two levels, offering a double reception room with wooden flooring, a separate kitchen and a private patio garden.

Nestled between Clapham High Street and Brixton Town Centre, Kepler Road gives access to two of South London's most popular destinations.

### Features

- Two Double Bedrooms
- Ground Floor Flat
- Two Bathrooms
- Double Reception Room
- Separate Kitchen
- Private Patio Garden

Kepler Road,  
London, SW4



Total area (approx.): 95.2 sq. m (1,024.8 sq. ft)

**Dexters**

Clapham High Street  
55 Clapham High Street  
London  
SW4 7TG  
Lettings  
020 7483 6364

Energy Rating: D. We aim to make our particulars both accurate and reliable. However they are not guaranteed; nor do they form part of an offer or contract. If you require clarification on any points then please contact us, especially if you're traveling some distance to view. Please note that appliances and heating systems have not been tested and therefore no warranties can be given as to their good working order.

 **RICS** | Regulated  
Estate Agent  
and Letting Agent

dexters.co.uk