



The Gathering, Thetford, IP24 1PQ

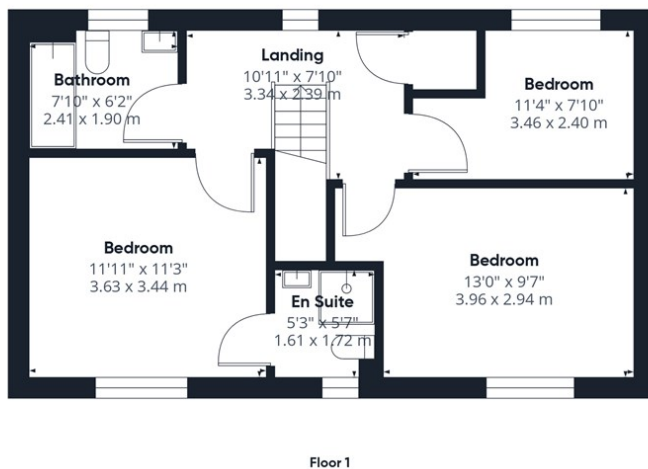
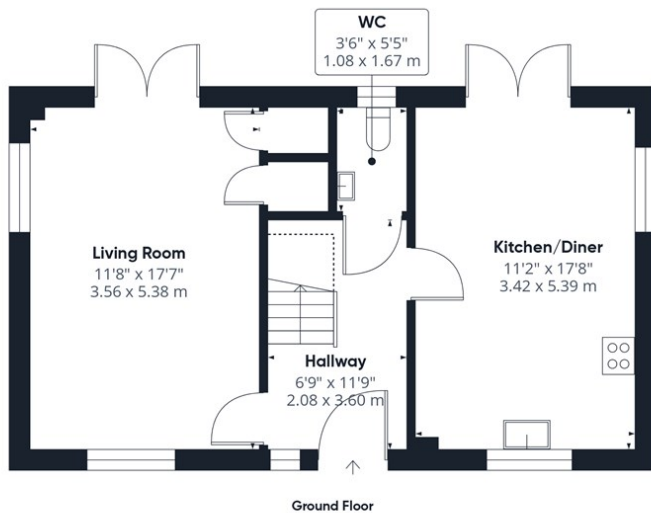
Rent - Guide Price £350,000 Deposit -

Guide Price £350,000 - £375,000. Within the picturesque village of Great Hockham lies this modern detached residence, offering a spacious accommodation ideal for a growing family.

- GUIDE PRICE £350,000 - £375,000
- CONSTRUCTED IN 2023
- DETACHED THREE BEDROOM FAMILY HOME
- EN SUITE TO BEDROOM ONE
- DETACHED GARAGE AND DRIVEWAY PARKING
- LOCATED IN THE PICTURESQUE VILLAGE OF GREAT HOCKHAM
- SITUATED WITHIN A SMALL DEVELOPMENT
- EXTREMELY WELL PRESENTED THROUGHOUT
- LARGE REAR GARDEN WITH FIELD VIEWS
- VIEWING STRONGLY ADVISED!



Council Tax Band: D - EPC Rating: B 86



Approximate total area⁽¹⁾

1031 ft²

95.8 m²

Reduced headroom

16 ft²

1.5 m²

(1) Excluding balconies and terraces

Reduced headroom

..... Below 5 ft/1.5 m

Calculations reference the RICS IPMS 3C standard. Measurements are approximate and not to scale. This floor plan is intended for illustration only.

GIRAFFE360

