



The Dovecote Wolverley Village, Wolverley



A truly individual Grade II Listed Georgian home, The Dovecote is believed to date back to the 1770s and offers a rare combination of heritage, privacy and village charm. Set within the historic grounds of Wolverley House, this remarkable property enjoys a peaceful setting of its own, creating the feeling of a private retreat while remaining within easy reach of the village centre.

- Distinctive Grade II Listed Georgian home, believed to date back to the 1770s.
- Peaceful and private setting within the historic grounds of Wolverley House.
- Arranged over four floors, offering approximately 1,237 sq ft of characterful accommodation.
- Set in just over half an acre with patios, lawns, fruit trees, summerhouse, nursery area and kitchen garden.
- Council Tax band: F
- Tenure: Freehold
- EPC Energy Efficiency Rating: F
- EPC Environmental Impact Rating: F





The first full view of The Dovecote is particularly impressive. Its handsome period façade, mellow brickwork, shaped gables, arched detailing and distinctive architectural form give the property an immediate sense of character and presence. It is a home unlike many others, with a fascinating history and an atmosphere that feels both special and wonderfully calm.

Arranged over four floors and extending to approximately 1,237 sq ft, the accommodation is both practical and full of charm. The newly renovated kitchen and breakfast room provide a welcoming everyday living space, while the first-floor lounge offers an elegant and peaceful reception room with fantastic views over the grounds.

There are three bedrooms in total, including a delightful principal bedroom suite on the upper floor, complete with exposed timbers, beautiful feature round windows, and newly renovated en-suite facilities.



A family bathroom serves the remaining bedrooms, which features free standing bath, shower, WC and sink, and adds a boutique hotel feel to the home.

Whilst the property is Grade II listed, the current owners have made all adjustments and renovations thoughtfully, and windows are double glazed throughout, which enhances the home's energy performance.



Outside, the property sits within just over half an acre, with established gardens designed for enjoyment throughout the seasons. Patios, lawns and an orchard of fruit trees create a beautiful outdoor setting, complemented by a summerhouse, and garden kitchen. The grounds offer privacy, space and a wonderful opportunity to relax, entertain or simply enjoy the tranquillity of this unique location.

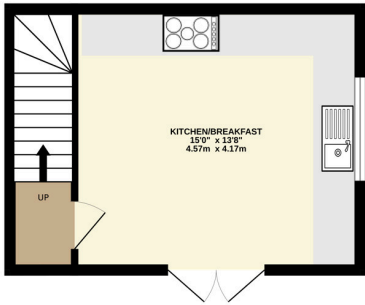
Additionally, there is ample private parking space, with a renovated double garage with electric doors and sockets, large car port, and gated gravel driveway.

Wolverley is a highly regarded village with a rich history, attractive countryside walks, a public house and local amenities. The setting offers the best of both worlds: peaceful village living with excellent access to wider transport links. The M5 can be reached in approximately 15 minutes, while Birmingham International Airport is around 40 minutes away by car.

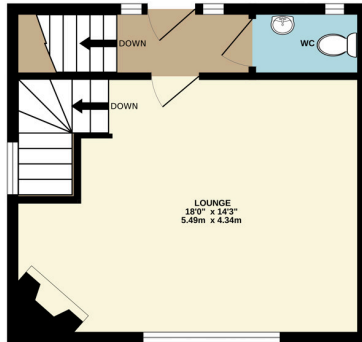


The Dovecote is a rare and characterful home, offering history, individuality and a truly special setting in one of Worcestershire's most charming villages.

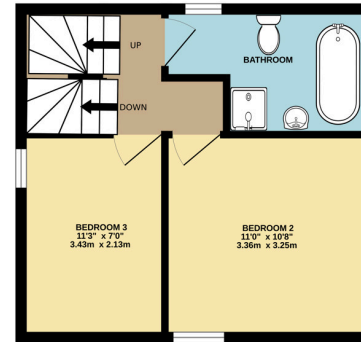
GROUND FLOOR
251 sq.ft. (23.4 sq.m.) approx.



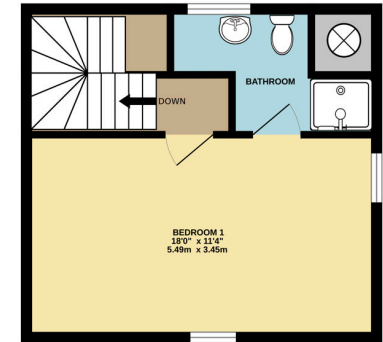
1ST FLOOR
307 sq.ft. (28.6 sq.m.) approx.



2ND FLOOR
316 sq.ft. (29.3 sq.m.) approx.



3RD FLOOR
316 sq.ft. (29.3 sq.m.) approx.



TOTAL FLOOR AREA : 1237sq.ft. (114.9 sq.m.) approx.

Whilst every attempt has been made to ensure the accuracy of the floorplan contained here, measurements of doors, windows, rooms and any other items are approximate and no responsibility is taken for any error, omission or mis-statement. This plan is for illustrative purposes only and should be used as such by any prospective purchaser. The services, systems and appliances shown have not been tested and no guarantee as to their operability or efficiency can be given.
Made with Metropix ©2026





**Nock
Deighton**
SINCE 1831

Nock Deighton Worcestershire

Nock Deighton (1831) Ltd, James Preston House Waterloo Street –
DY11 7FQ

01562 745082

Worcestershire@nockdeighton.co.uk

www.nockdeighton.co.uk/

Buyers Compliance Administration Fee: In accordance with The Money Laundering Regulations 2007, Agents are required to carry out due diligence on all Clients to confirm their identity, including eventual buyers of a property. The Agents use electronic verification system to verify Clients' identity. This is not a credit check so will have no effect on credit history though may check details you supply against any particulars on any database to which they have access. By placing an offer on a property you agree that if your offer is accepted, subject to contract, we as Agents for the seller can complete this check for a fee of £75 inc VAT (£62.50 + VAT) per property transaction, non-refundable under any circumstance. A record of the search will be retained by the Agents.