



Buckland Crescent | London | NW3

Asking price £1,800,000 | Leasehold

 4  3  1  C

ADN
RESIDENTIAL

A well presented 4/5 bedroom apartment arranged over the garden level of a handsome period property located in Belsize Park NW3. This outstanding property benefits from having a private garden and comprises, spacious reception room with French doors leading onto the garden and modern kitchen, principal bedroom with built in storage and en-suite bathroom, three further bedrooms and a family bathroom. Additional benefits include its own private entrance and a studio/garden room with an additional shower room in the garden. Buckland Crescent is ideally positioned 0.2m from Swiss Cottage underground station. (Jubilee Line)

- Garden Apartment
- 4/5 Bedrooms
- Spacious Reception Room
- Private Entrance
- 3 Bathrooms
- Wooden Flooring

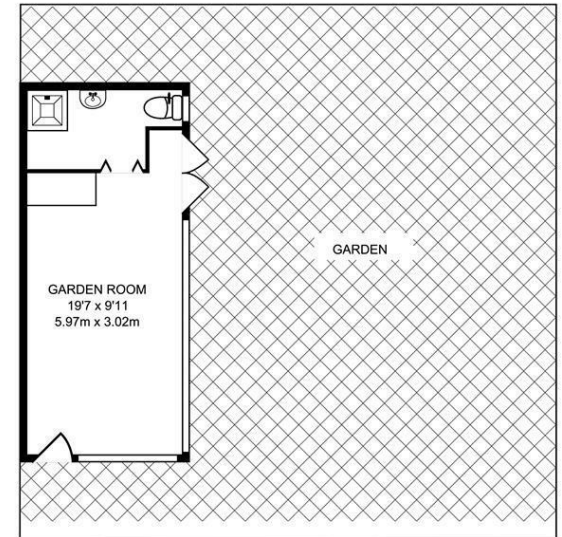
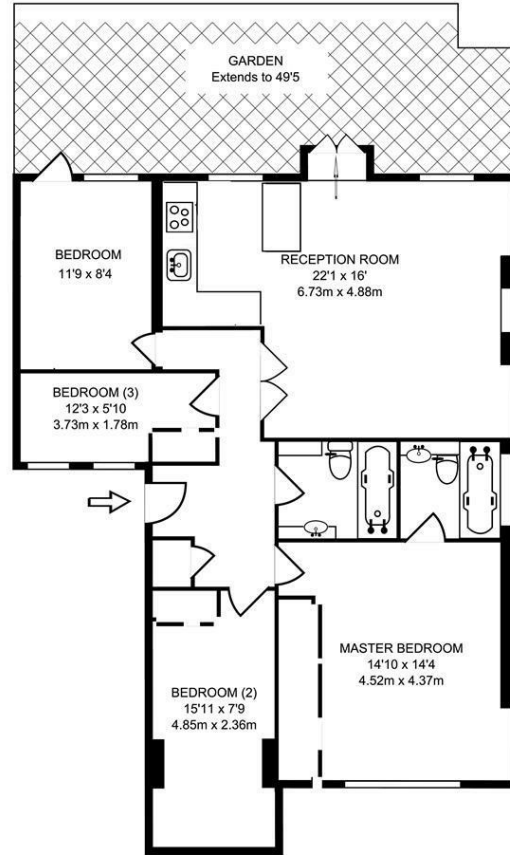
Council Tax Band: G
EPC: C





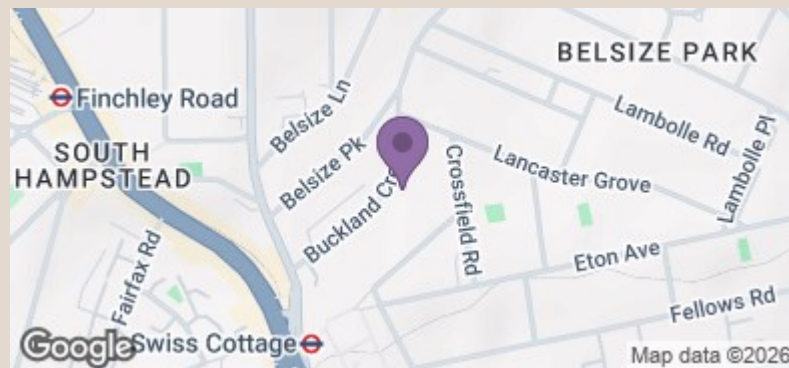


BUCKLAND CRESCENT, NW5



GARDEN ROOM INTERNAL FLOOR AREA
225 SQ FT - 20.89 SQ M

INTERNAL FLOOR AREA - 1007 SQ FT - 93.64 SQ FT



Energy Efficiency Rating		Current	Potential
Very energy efficient - lower running costs			
(92 plus)	A		
(81-91)	B		
(69-80)	C	79	80
(55-68)	D		
(39-54)	E		
(21-38)	F		
(1-20)	G		
Not energy efficient - higher running costs			
England & Wales		EU Directive 2002/91/EC	

info@adnresidential.co.uk | 020 7407 5155