

IONA CRESCENT SLOUGH, SL1 6JH

Nestled in the tranquil cul-de-sac of Iona Crescent, Cippenham, this charming top floor flat offers a delightful living experience. With two spacious double bedrooms, both featuring built-in wardrobes, this well-presented apartment is perfect for those seeking comfort and convenience.

£1,550 Per



1



1

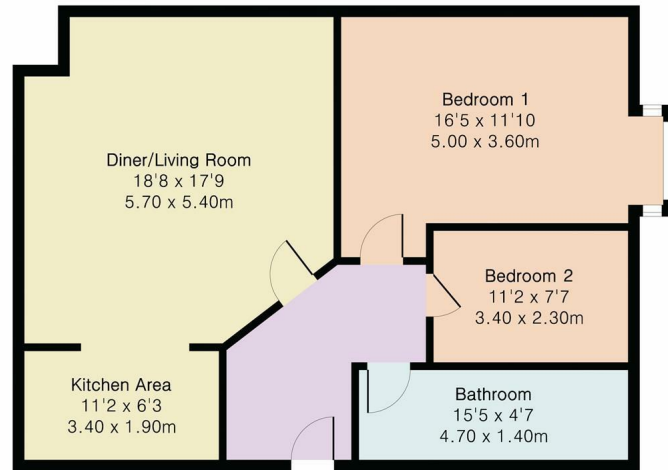


2

EPC C

cameron
 **king**
ESTATE AGENTS

Approximate Gross Internal Area 878 sq ft - 82 sq m

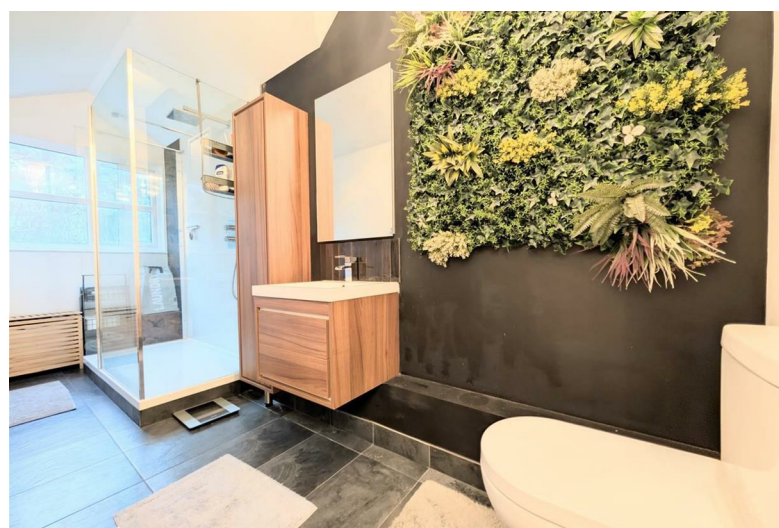
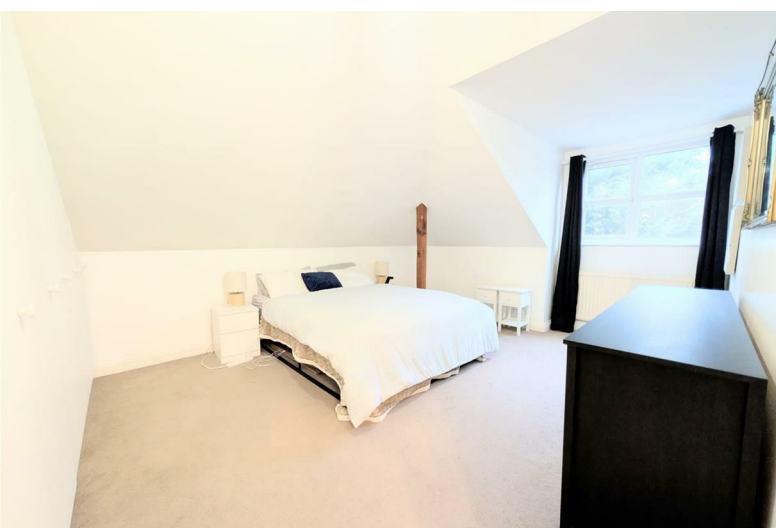


The heart of the home is an inviting open plan living, dining, and kitchen area, designed to create a warm and welcoming atmosphere. The modern kitchen boasts high-spec integrated appliances, making it a joy for any cooking enthusiast. Natural light floods the space, enhancing the feeling of openness and warmth throughout the flat.

Situated conveniently close to Burnham station and the M4 motorway Junction 7, this property is ideal for commuters and those who appreciate easy access to transport links. Additionally, the flat comes with parking for one vehicle, adding to the convenience of this lovely home.

Available to let part furnished from 31st March, this property presents an excellent opportunity for anyone looking to settle in a desirable location. Whether you are a professional couple or a small family, this flat is sure to meet your needs with its blend of modern living and practical amenities. Don't miss the chance to make this delightful flat your new home.

- Two Double Bedrooms
- Top Floor Flat
- Newly Renovated
- Modern and Well Presented
- Integrated Kitchen Appliances
- Part Furnished
- Close to Burnham, Station and M4 J7 Motorway
- Secure Entry Phone System
- Allocated Parking for One Vehicle
- Available 31st March



411 Bath Road, Slough, SL1 5QL
t: 01628 667442
e: sales@cameronking.co.uk

