



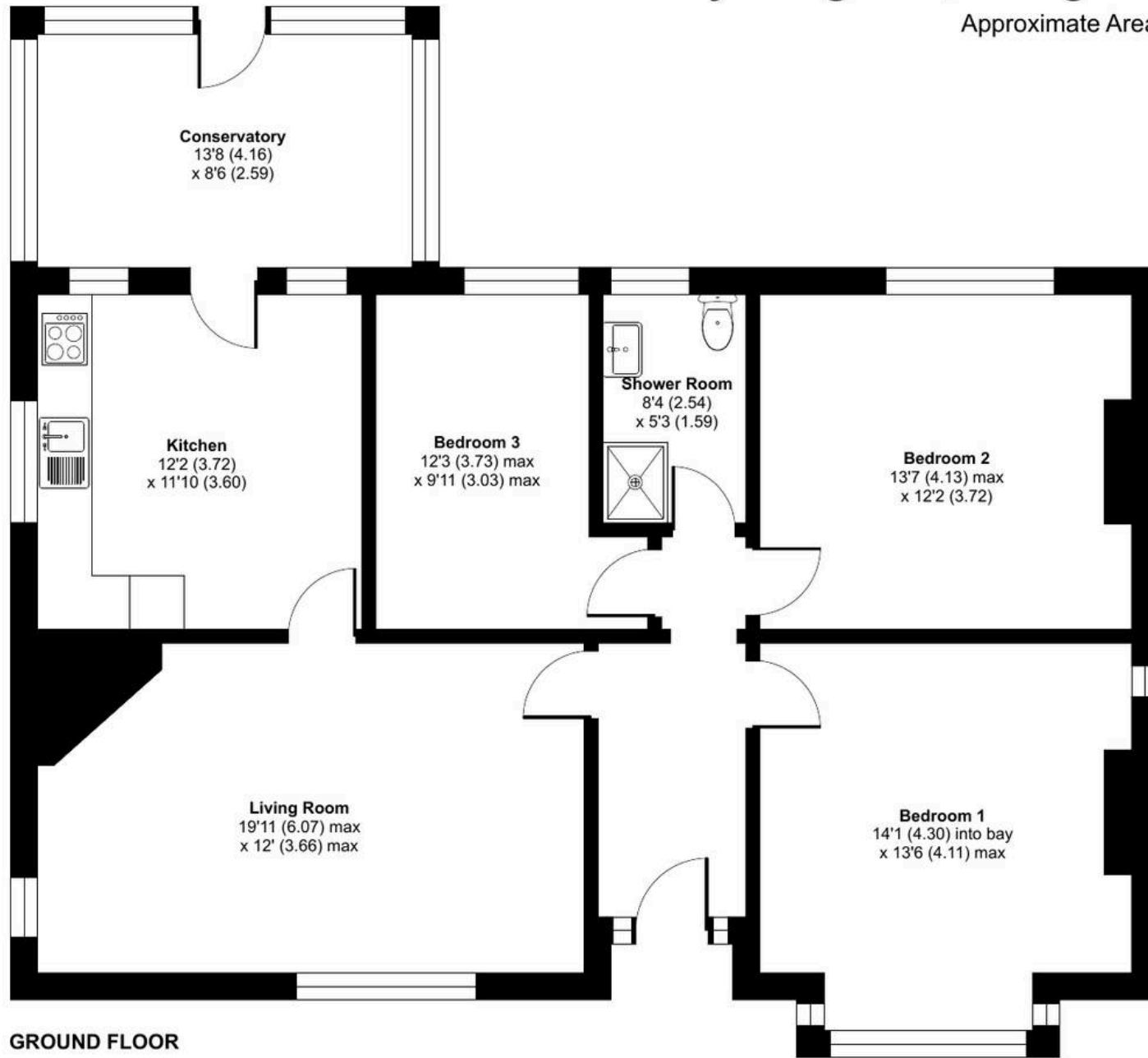
## Nursery Bungalow, Swingfield - CT15 7EZ

Guide Price £675,000

# Nursery Bungalow, Swingfield, Dover, CT15

Approximate Area = 1117 sq ft / 103.7 sq m

For identification only - Not to scale



**GROUND FLOOR**





## Nursery Bungalow

Swingfield, Dover

Set in the heart of the highly sought after hamlet of Swingfield, this spacious three-bedroom detached bungalow offers a rare opportunity, having remained in the same family ownership for approximately 40 years. The bright and welcoming accommodation comprises a covered entrance porch, an inviting entrance hall, a generous double aspect living room centred around a fireplace with wood-burning stove, a well-appointed kitchen with breakfast bar, conservatory enjoying delightful views across the gardens, a modern shower room/WC and three well proportioned bedrooms. The lifestyle on offer is truly exceptional, with beautifully established grounds extending to approximately 1.25 acres, showcasing a pond with waterfall feature, expansive lawns, mature hedging and shrubs, orchard area, woodland to the far boundary and a variety of outbuildings, creating a peaceful and private setting ideal for those seeking space, tranquillity, and a connection to the countryside. No chain!

Council Tax band: E

Tenure: Freehold

EPC Energy Efficiency Rating: D

EPC Environmental Impact Rating: E









## Laing Bennett

Laing Bennett Ltd, The Estate Office, 8 Station Road – CT18 8HP

01303 863393 • [info@laingbennett.co.uk](mailto:info@laingbennett.co.uk) • [www.laingbennett.co.uk/](http://www.laingbennett.co.uk/)

DISCLAIMER – These details are for guidance only and do not form part of an offer or contract. Measurements are approximate. Laing Bennett Ltd and the Vendor/Landlord accept no liability. Services and appliances are untested. Applicants must make their own checks. Items shown may not be included. No staff have authority to give warranties.